

4

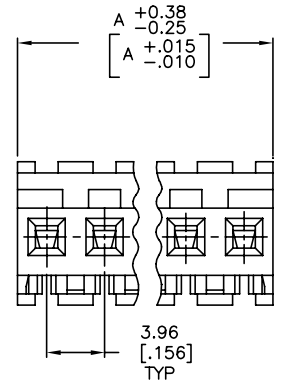
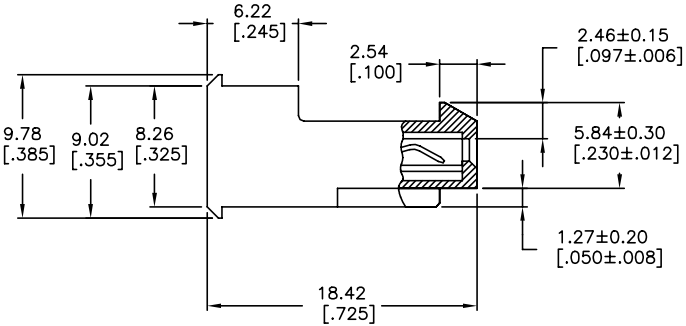
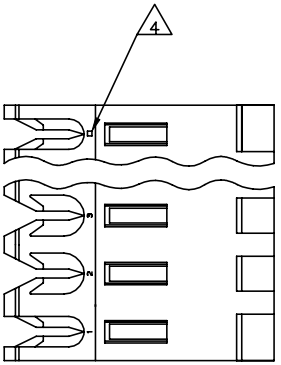
3

2

1

THIS DRAWING IS UNPUBLISHED. RELEASED FOR PUBLICATION  
ALL RIGHTS RESERVED.

REVISIONS					
P	LTR	DESCRIPTION	DATE	DMN	APVD
V		REVISED PER ECR-20-000822	27MAY2020	PC	SW



95.10	[3.744]	24	5-640601-4
91.14	[3.588]	23	5-640601-3
87.17	[3.432]	22	5-640601-2
83.21	[3.276]	21	5-640601-1
79.25	[3.120]	20	5-640601-0
75.29	[2.964]	19	4-640601-9
71.32	[2.808]	18	4-640601-8
67.36	[2.652]	17	4-640601-7
63.40	[2.496]	16	4-640601-6
59.44	[2.340]	15	4-640601-5
55.47	[2.184]	14	4-640601-4
51.51	[2.028]	13	4-640601-3
47.55	[1.872]	12	4-640601-2
43.59	[1.716]	11	4-640601-1
39.62	[1.560]	10	4-640601-0
35.66	[1.404]	9	3-640601-9
31.70	[1.248]	8	3-640601-8
27.74	[1.092]	7	3-640601-7
23.77	[.936]	6	3-640601-6
19.81	[.780]	5	3-640601-5
15.85	[.624]	4	3-640601-4
11.89	[.468]	3	3-640601-3
7.92	[.312]	2	3-640601-2
<b>OBSOLETE</b>	95.10 [3.744] 24	<del>2-640601-4</del>	
<b>SUPERSEDED</b>	91.14 [3.588] 23	<del>2-640601-3</del>	
<b>SUPERSEDED</b>	87.17 [3.432] 22	<del>2-640601-2</del>	
<b>SUPERSEDED</b>	83.21 [3.276] 21	<del>2-640601-1</del>	
<b>SUPERSEDED</b>	79.25 [3.120] 20	<del>2-640601-0</del>	
<b>SUPERSEDED</b>	75.29 [2.964] 19	<del>1-640601-9</del>	
<b>SUPERSEDED</b>	71.32 [2.808] 18	<del>1-640601-8</del>	
<b>SUPERSEDED</b>	67.36 [2.652] 17	<del>1-640601-7</del>	
<b>SUPERSEDED</b>	63.40 [2.496] 16	<del>1-640601-6</del>	
<b>OBSOLETE</b>	59.44 [2.340] 15	<del>1-640601-5</del>	
<b>SUPERSEDED</b>	55.47 [2.184] 14	<del>1-640601-4</del>	
<b>SUPERSEDED</b>	51.51 [2.028] 13	<del>1-640601-3</del>	
<b>SUPERSEDED</b>	47.55 [1.872] 12	<del>1-640601-2</del>	
<b>SUPERSEDED</b>	43.59 [1.716] 11	<del>1-640601-1</del>	
<b>SUPERSEDED</b>	39.62 [1.560] 10	<del>1-640601-0</del>	
<b>SUPERSEDED</b>	35.66 [1.404] 9	<del>640601-9</del>	
<b>SUPERSEDED</b>	31.70 [1.248] 8	<del>640601-8</del>	
<b>SUPERSEDED</b>	27.74 [1.092] 7	<del>640601-7</del>	
<b>SUPERSEDED</b>	23.77 [.936] 6	<del>640601-6</del>	
<b>SUPERSEDED</b>	19.81 [.780] 5	<del>640601-5</del>	
<b>SUPERSEDED</b>	15.85 [.624] 4	<del>640601-4</del>	
<b>SUPERSEDED</b>	11.89 [.468] 3	<del>640601-3</del>	
<b>SUPERSEDED</b>	7.92 [.312] 2	<del>640601-2</del>	

- 1 MATERIAL: CONNECTOR - NYLON UL94V-2 (RED). CONTACTS - 0.30[.012] THICK COPPER ALLOY (BRIGHT TIN-LEAD 0.00203[.000080] MIN. THICK FOR CONTACTS 640601-2 THRU 2-640601-4) (MATTE WHISKER MITIGATED TIN 0.00203[.000080] MIN THICKNESS OVER NICKEL UNDERPLATE FOR 3-640601-2 THRU 5-640601-4).
- 2 CONTACTS ACCEPT 22 AWG WIRE WITH 2.41[.095] MAX INSULATION DIAMETER.
- 3 CONTACTS MUST ACCEPT 1.14±0.03[.045±.001] SQUARE POST AND REMAIN LOCKED IN POSITION.
- 4 IDENTIFICATION NUMBER FOR LAST CIRCUIT MAY NOT APPEAR ON ALL ASSEMBLIES.
- 5 DIMENSIONS IN BRACKETS ARE IN INCHES.
- 6 HOUSING FEATURES ARE: FEED-THRU WITH LOCKING RAMP.
- OBSOLETE PARTS: OBSOLETE CIS STREAMLINING PER D.RENAUD/D.SINISI
- OBSOLETE PARTS

THIS DRAWING IS A CONTROLLED DOCUMENT.		DMN R. SWING 12 FEB 91	TE Connectivity Ltd.																													
DIMENSIONS: mm [INCHES]		CHK D. CLARK 19 FEB 91	MATERIAL																													
TOLERANCES UNLESS OTHERWISE SPECIFIED:		APVD D. CLARK 19 FEB 91	FINISH																													
<table border="0"> <tr><td>0</td><td>PLC</td><td>±</td><td>-</td></tr> <tr><td>1</td><td>PLC</td><td>±</td><td>-</td></tr> <tr><td>2</td><td>PLC</td><td>±</td><td>-</td></tr> <tr><td>3</td><td>PLC</td><td>±</td><td>-</td></tr> <tr><td>4</td><td>PLC</td><td>±</td><td>-</td></tr> <tr><td>5</td><td>PLC</td><td>±</td><td>-</td></tr> <tr><td>6</td><td>PLC</td><td>±</td><td>-</td></tr> </table>		0	PLC	±	-	1	PLC	±	-	2	PLC	±	-	3	PLC	±	-	4	PLC	±	-	5	PLC	±	-	6	PLC	±	-	NAME MTA-156 CONNECTOR ASSEMBLY, 22 AWG, STANDARD	RESTRICTED TO	
0	PLC	±	-																													
1	PLC	±	-																													
2	PLC	±	-																													
3	PLC	±	-																													
4	PLC	±	-																													
5	PLC	±	-																													
6	PLC	±	-																													
MATERIAL		PRODUCT SPEC 108-1051	SCALE 4:1																													
FINISH		APPLICATION SPEC 114-1020	SHEET 1 of 1																													
ANGLE		WEIGHT	REV																													
CUSTOMER DRAWING		CAGE CODE 00779		CAGE CODE 640601																												