

4

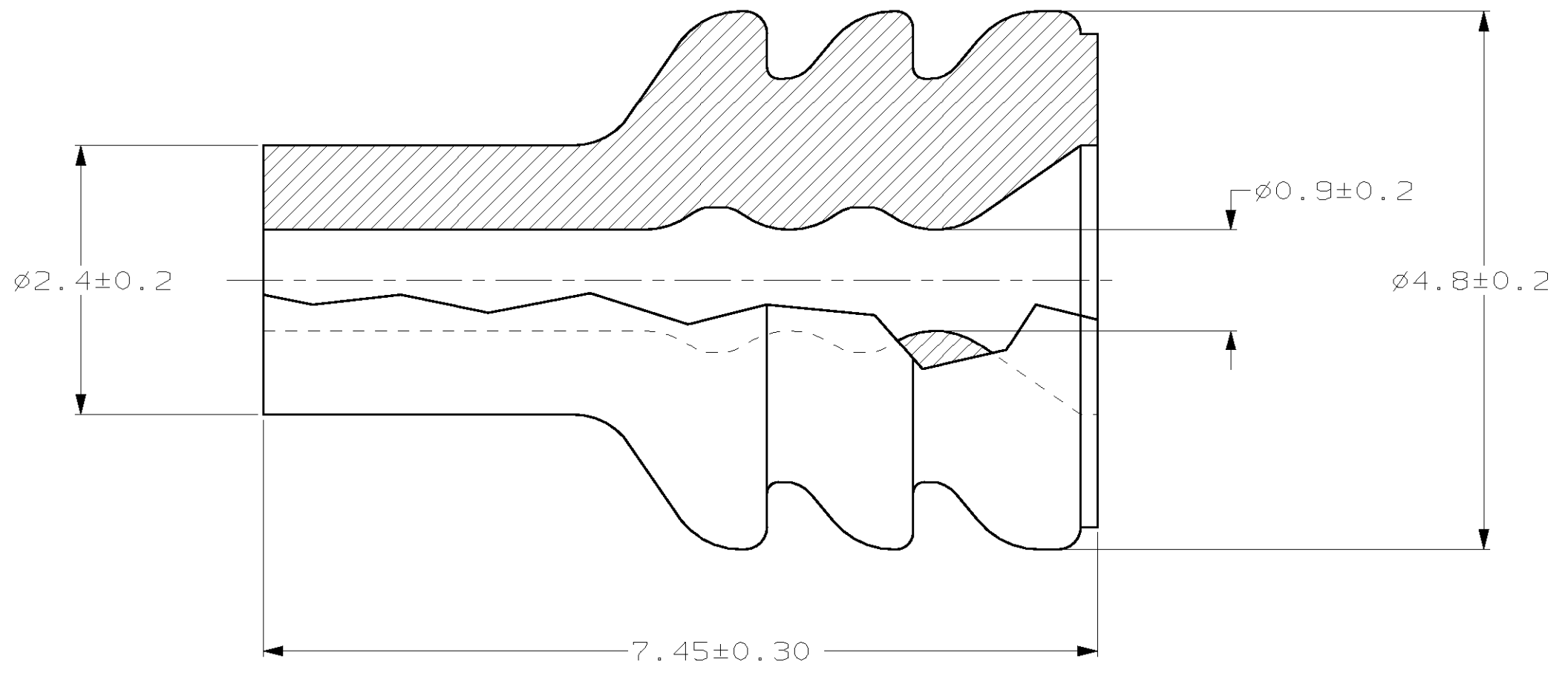
3

2

1

THIS DRAWING IS UNPUBLISHED. RELEASED FOR PUBLICATION ,19 .
 © COPYRIGHT 19 BY AMP INCORPORATED. ALL RIGHTS RESERVED.

LOC	DIST	REVISIONS					
		P	LTR	DESCRIPTION	DATE	DWN	APVD
GE	00		A	REV PER ECN OK40-0193-99	06OCT99	KL	GI
			B	REV PER EC# OK40-0211-00	9-26-00	PC	MH



1. FOR INSULATION Ø1.2 TO Ø1.7.

184139-1
PART NO.

<small>THIS DRAWING IS A CONTROLLED DOCUMENT FOR AMP INCORPORATED. IT IS SUBJECT TO CHANGE AND THE CONTROLLING ENGINEERING ORGANIZATION SHOULD BE CONTACTED FOR THE LATEST REVISION.</small>		DWN	KD LYTL	6/30/95	AMP Incorporated Harrisburg, PA 17105-3608
DIMENSIONS: mm		CHK	JP KUNKLE	7/12/95	
		APVD	JP KUNKLE	7/12/95	NAME
TOLERANCES UNLESS OTHERWISE SPECIFIED: 0 PLC ±- 1 PLC ±- 2 PLC ±0.15 3 PLC ±- 4 PLC ±- ANGLES ±1°		PRODUCT SPEC	WIRE SEAL, SSC		
MATERIAL SILICONE RUBBER CONTAINS 5% OIL		APPLICATION SPEC	-		
FINISH COLOR: BLUE		WEIGHT	-		
		CUSTOMER DRAWING	SIZE	CAGE CODE	DRAWING NO
			A3	00779	C-184139
			SCALE	SHEET	REV
			20:1	1 OF 1	B