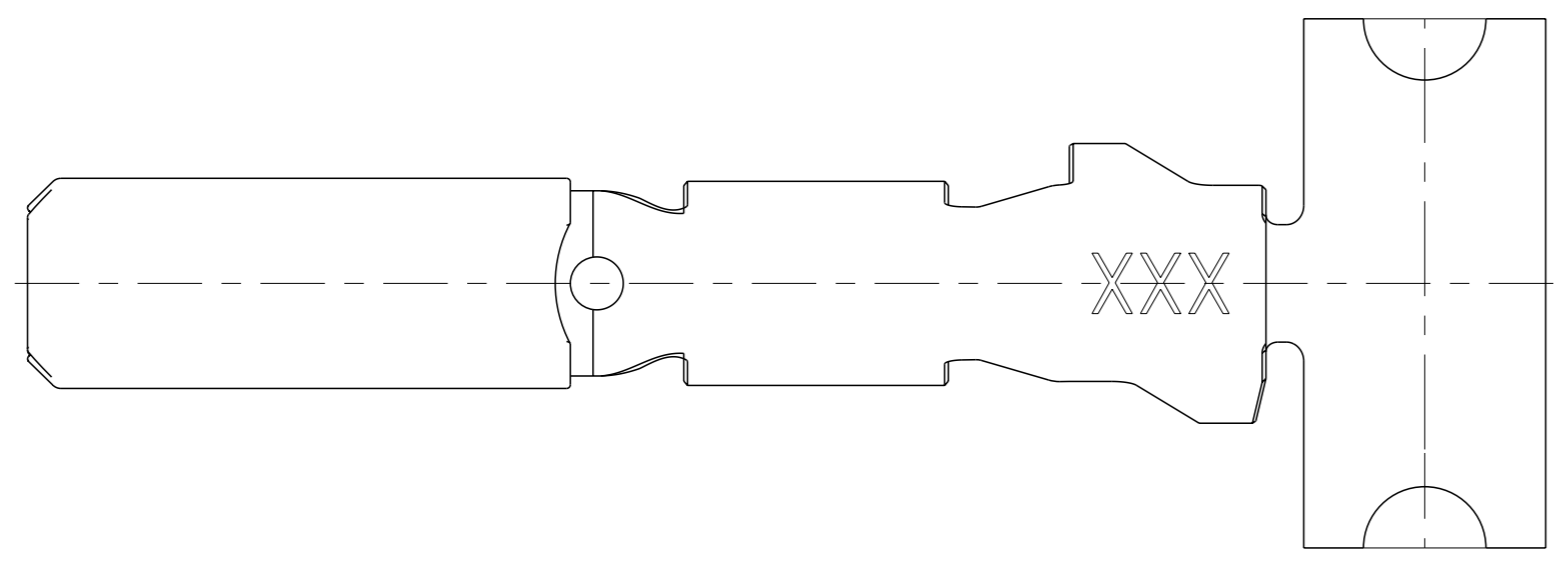
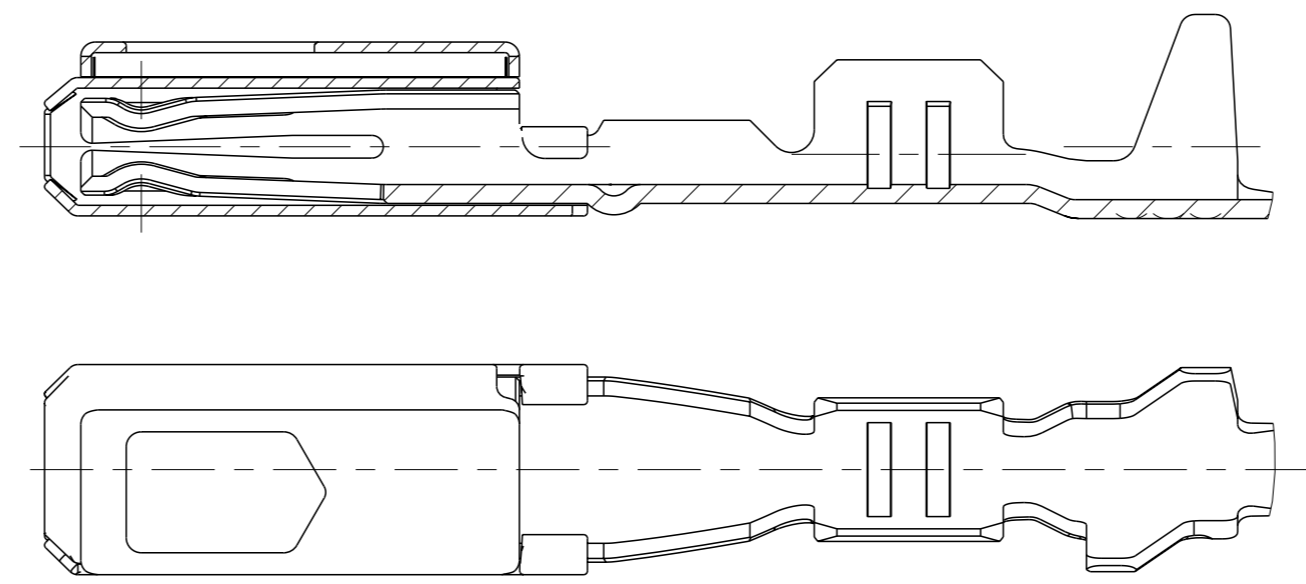


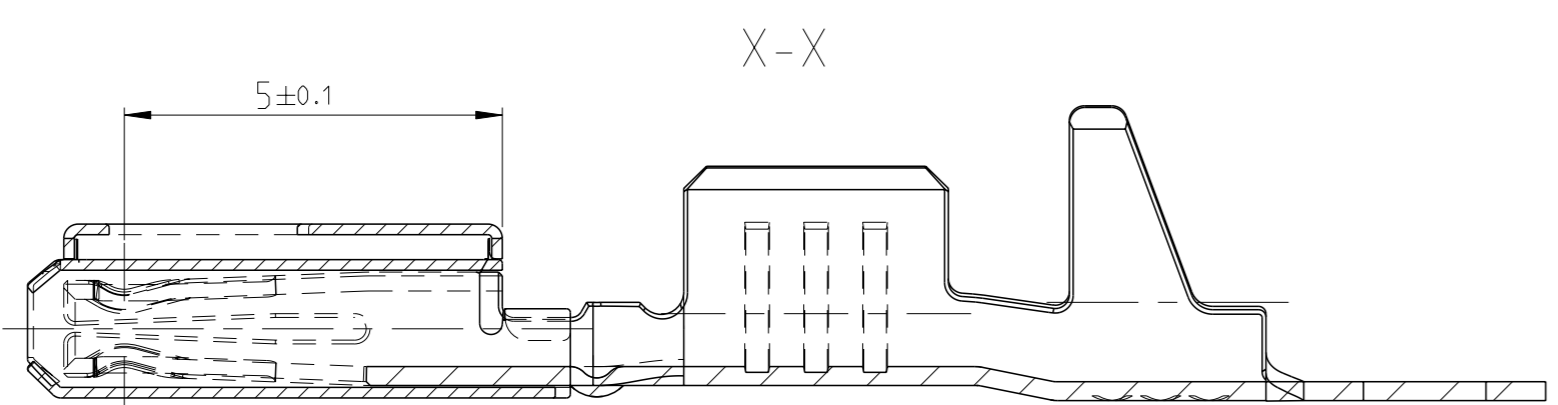
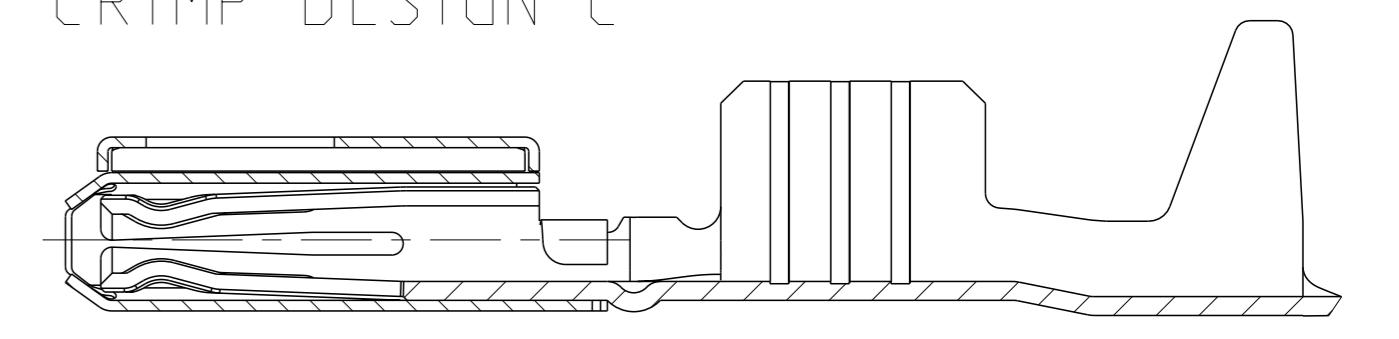
PROJEKT NR.:		REVISIONS				
		ÄNDERUNGEN	BESCHREIBUNG	DATE	DWN	APVD
C4	ECR-14-015440			16OCT2014	MN	Sche
C5	ECR-15-006287			22APR2015	SCK	Sche
C6	ECR-18-007266			09MAI2018	FRAN	SCH.



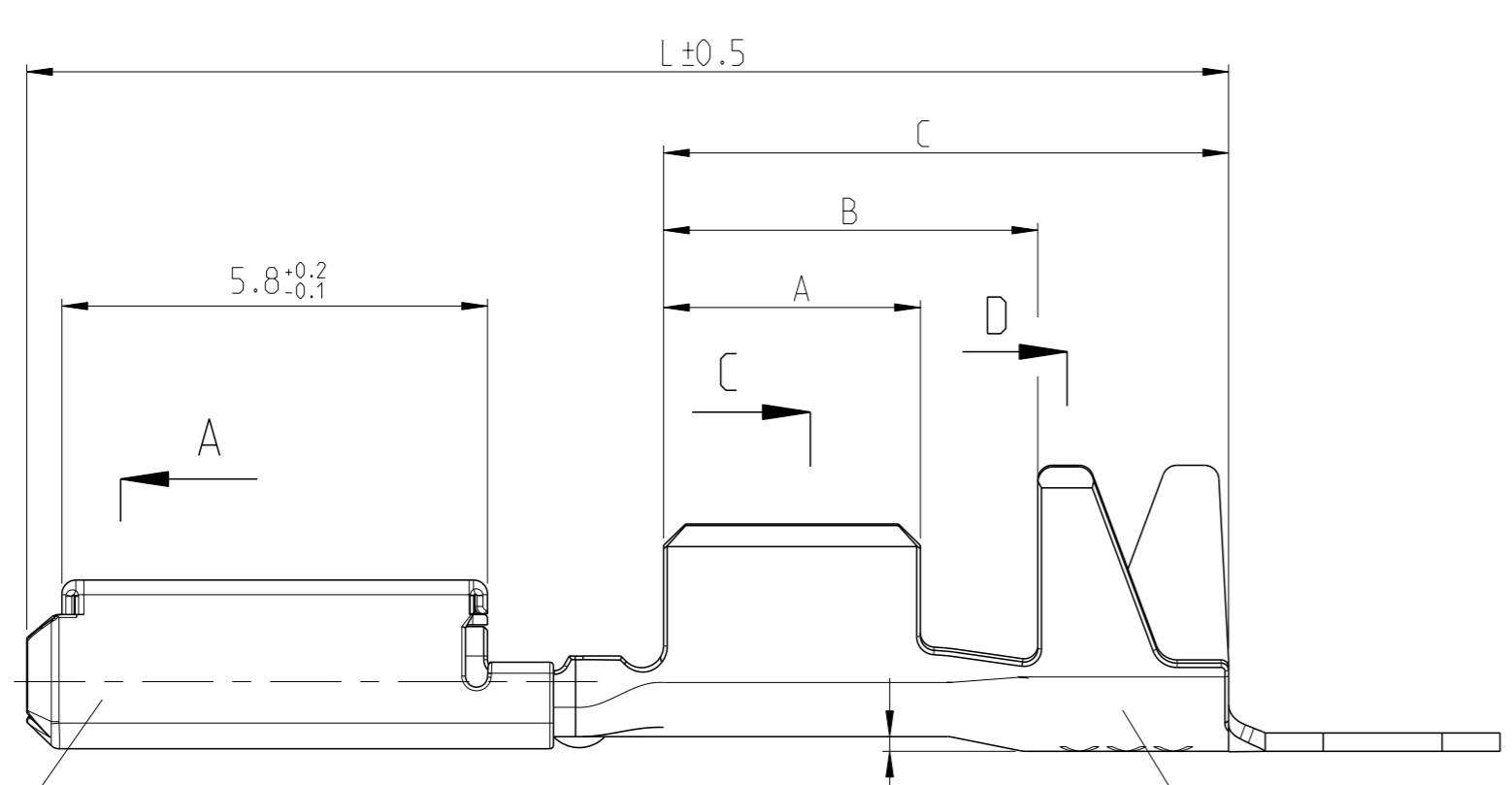
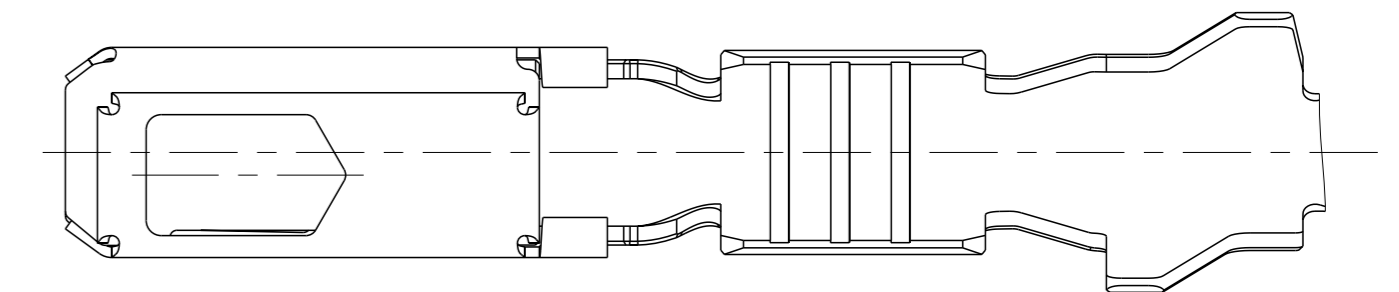
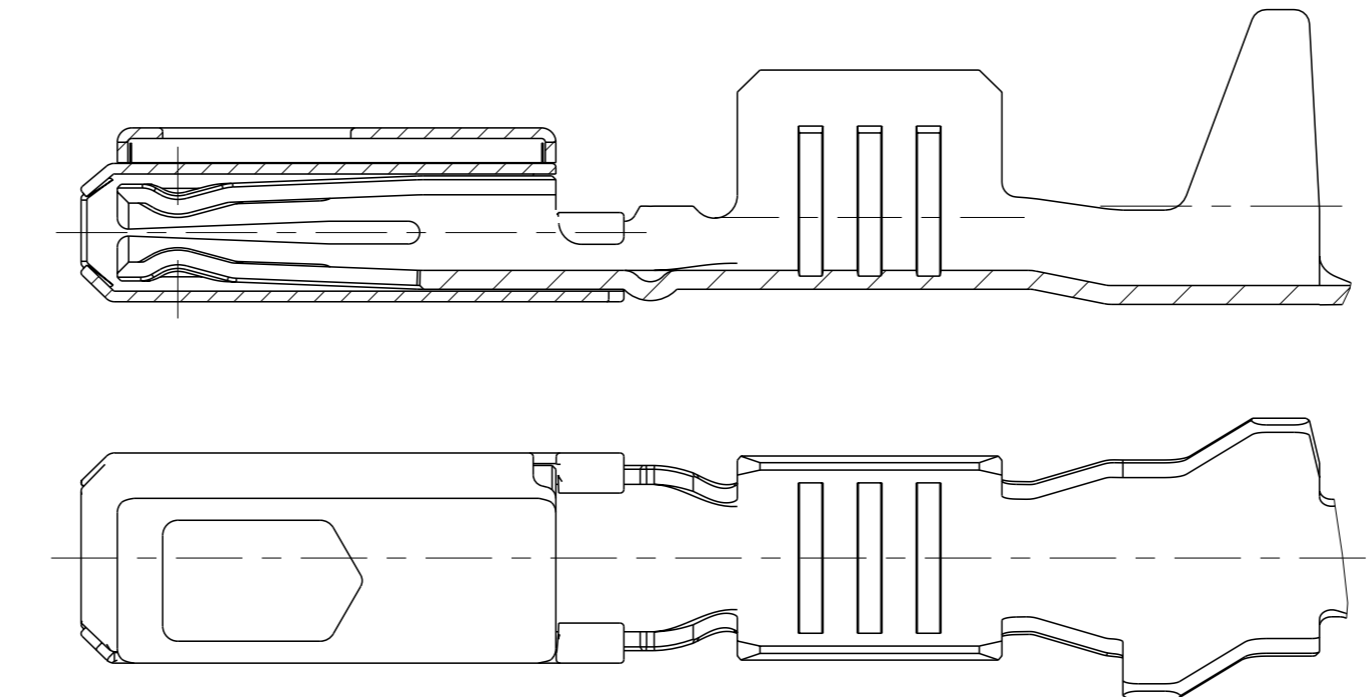
C6 Crimpausführung A
 CRIMP DESIGN A



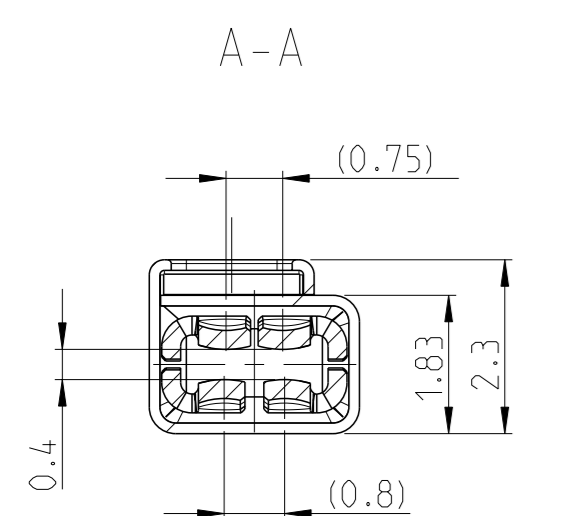
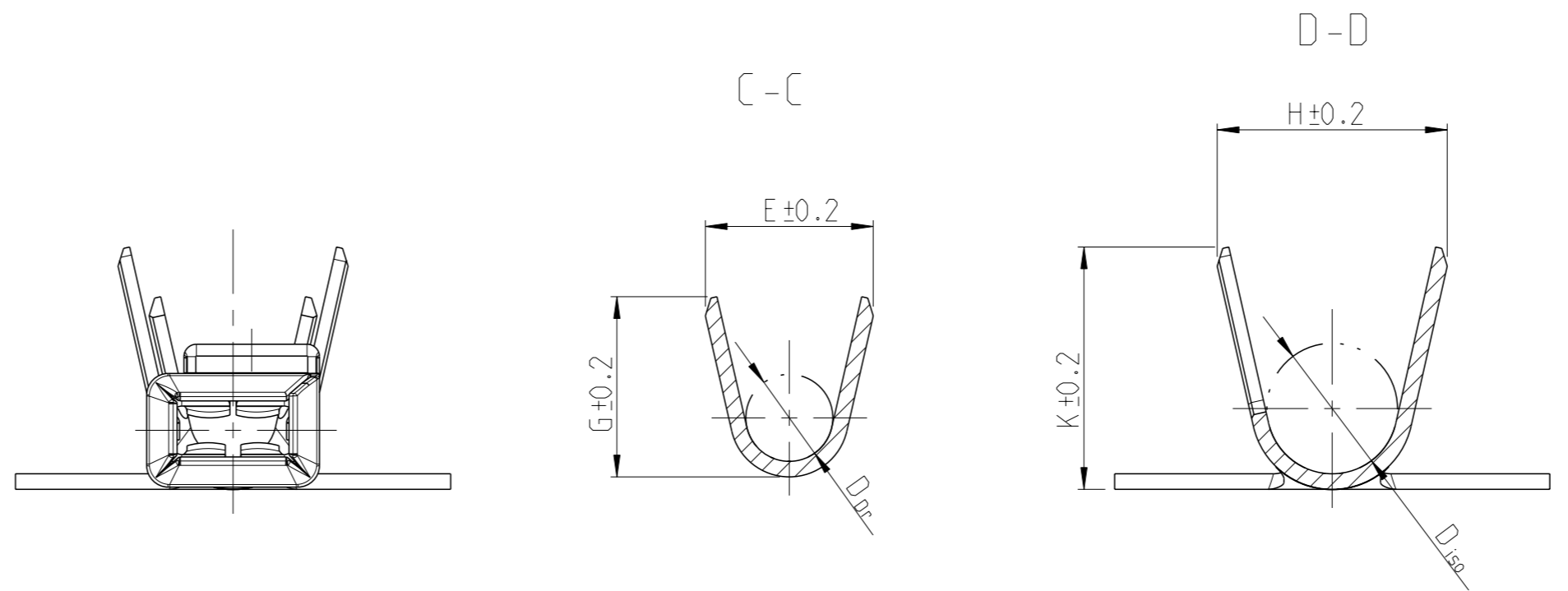
Crimpausführung C
 CRIMP DESIGN C



C6 Crimpausführung B
 CRIMP DESIGN B



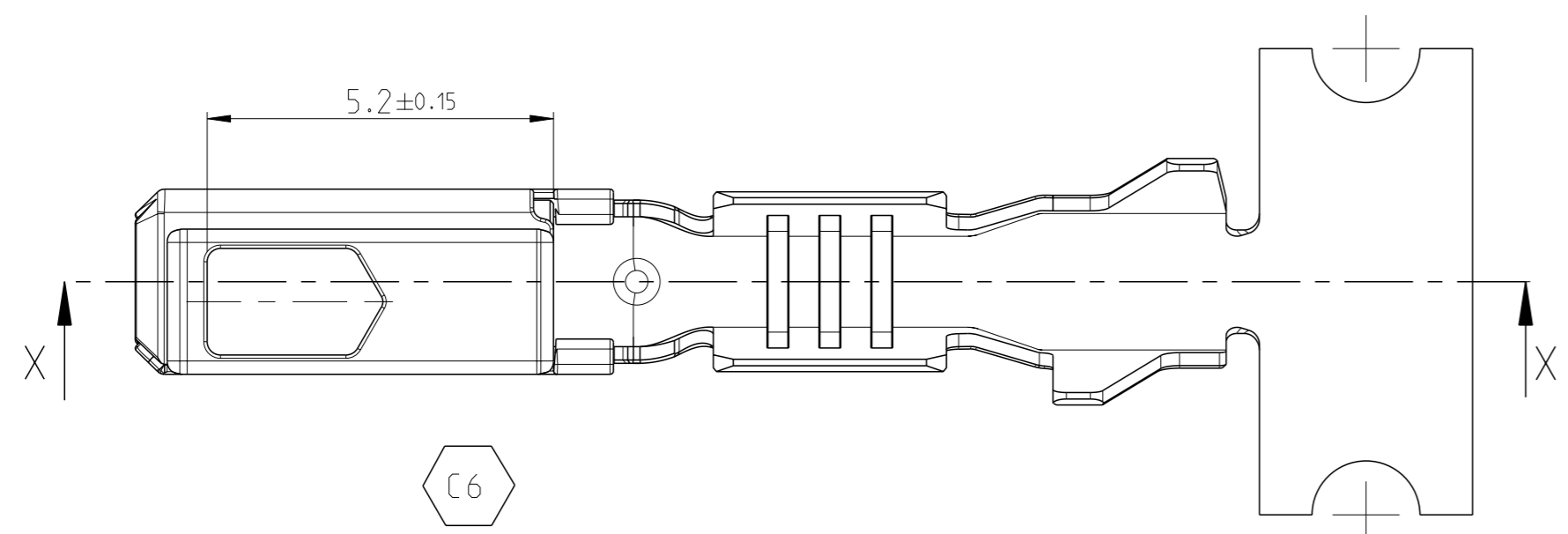
Kontaktkörper/BODY
 MATERIAL CuNiSi F57
 Oberfläche Zinn 0.8-2µm Sn
 Silber 1.6-4.6µm Ag ueber Ni im Kontaktbereich, Sn im Crimpbereich
 SURFACE TIN 0.8-2µm Sn
 SILVER 1.6-4.6µm Ag OVER Ni AT CONTACT AREA, Sn AT CRIMP AREA



Ueberfeder/SPRING
 MATERIAL X10CrNi188
 Oberfläche blank
 SURFACE UNCOATED

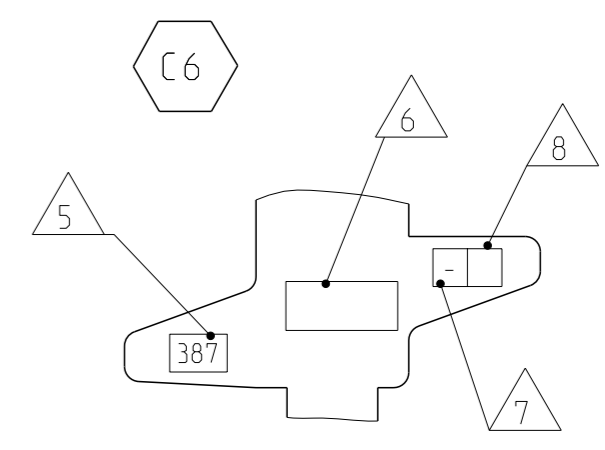
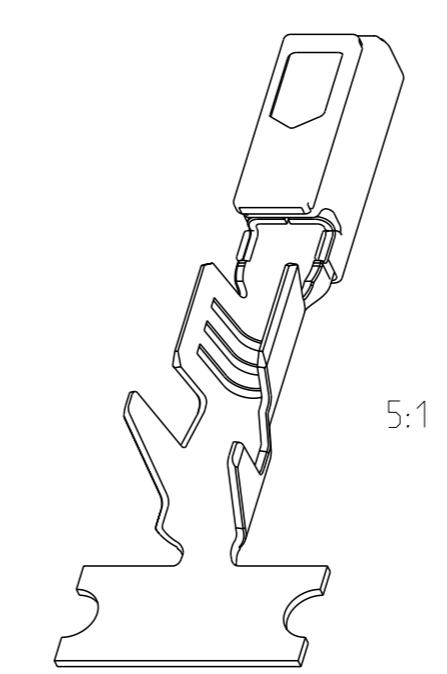
Bemerkungen
 NOTES

- 1 Kontakt nur fuer Testzwecke (erhoehte Steckzyklenzahl), nicht fuer Serieneinsatz
 CONTACT ONLY FOR SPECIAL TEST-APPLICATIONS (HIGH MATING-CYCLES). NOT FOR SERIES-APPLICATION
- 2 Nur fuer FLR-Leitung nach DIN 72551, Teil 6
 FOR FLR-CONDUCTOR ACCORDING TO DIN 72551-6 ONLY
- 3 Einzelheiten der Ausfuehrung bleiben dem Hersteller ueberlassen
 DETAILS OF DESIGN ARE LEFT TO MANUFACTURER
- 4 Oberflaeche: blank, Material CuNi12Zn24
 SURFACE: UNCOATED, MATERIAL CuNi12Zn24
- 5 DATE-CODE (WEEK / YEAR (E.G. WEEK NUMBER 38 / YEAR 2007))
 Datumscode (Woche / Jahr, z. B. KW38 / Jahr 2007)
- 6 SUPPLIER MARK
 Lieferantenkennzeichnung
- 7 SUPPLIER REVISION INDEX
 Revisionsindex des Lieferanten
- 8 DIE-IDENTIFICATION
 Werkzeug-Kennzeichnung



C6

TE BESTELL-NR. ORDER NO.	REV.	DGB WIRE-SIZE-RANGE mm 2	Oberflaeche SURFACE	Crimpausfuehrung CRIMP DESIGN	Gewicht WEIGHT g	Laenge LENGTH mm	Drahtcrimp WIRE CRIMP	Iso' crimp INSU. CRIMP
5-1241608-1	C	0.75...1.5	Sn	c	0.2	A = 3.5 B = 5.1 C = 7.7 L = 16.5	E = 2.7 G = 2.9 D _{DR} = 1.4	H = 3.7 K = 3.9 D _{ISO} = 2.1
1241608-6	C		Ag	B				
1241608-3	C		4	B				
1241608-2	C		Au	B				
1241608-1	C	0.35...0.5	Sn	B	0.2	A = 2.5 B = 3.6 C = 5.6 L = 15.8	E = 1.9 G = 1.9 D _{DR} = 0.8	H = 2.7 K = 2.7 D _{ISO} = 1.4
1452158-2	C		Au	A				
1452158-1	B		Sn	A				



THIS DRAWING IS A CONTROLLED DOCUMENT.		DWN		DATE		SCALE	
OTHER DIMENSIONS: -		S. Garcia		04FEB2000		10:1	
TOLERANCES: UNLESS OTHERWISE SPECIFIED: -		C. Boemmel		04FEB2000		10:1	
DIMENSIONS: -		APVD		Jetter		10:1	
MASSDIMENSIONS: -		0 PLC ± DIN		PRODUCT SPEC		MATERIAL	
-		1 PLC ± 6930- m		PRODUCT TYPE		MATERIAL	
-		2 PLC ±		108-18030		MATERIAL	
-		3 PLC ±		APPLICATION SPEC		MATERIAL	
-		4 PLC ±		VERARBEITUNGSSPEZ.		MATERIAL	
-		FINISH/SCHWARZ		114-18286		MATERIAL	
-		WEIGHT		Customer Drawing		MATERIAL	
-		GEWICHT		/KUNDENZEICHNUNG		MATERIAL	
-		SCALE		10:1		MATERIAL	
-		SHEET		1		MATERIAL	
-		OF		1		MATERIAL	
-		REV		C6		MATERIAL	