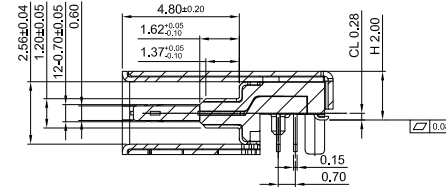
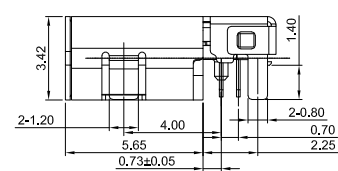
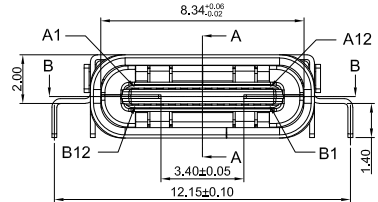
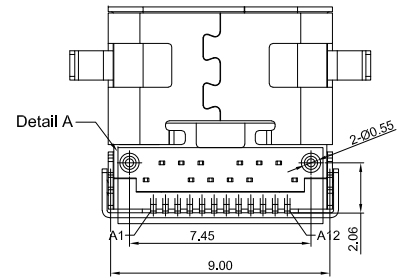
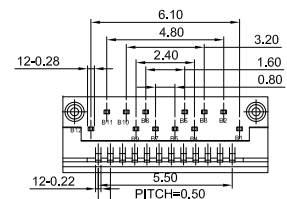
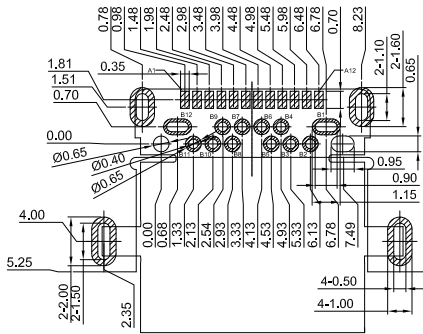


SECTION B-B

USB TYPE C PLUG



SECTION A-A



Detail C

Detail A

USB TYPE-C FULL-FEATURED RECEPTACLE INTERFACE PIN ASSIGNMENTS

PR	Signal Name	Description	PR	Signal Name	Description
A1	GND	Ground return	B12	GND	Ground return
A2	SS70	Positive half of the SuperSpeed TX differential pair	B11	SSR0	Positive half of the SuperSpeed RX differential pair
A3	SS7X	Negative half of the SuperSpeed TX differential pair	B10	SSR0X	Negative half of the SuperSpeed RX differential pair
A4	VBUS	Bus Power	B9	VBUS	Bus Power
A5	CC1	Configuration Channel	B8	SBU2	Sideband Use(SBU)
A6	Dp1	Positive half of the USB 2.0 differential pair-Position 1	B7	Dn2	Negative half of the USB 2.0 differential pair-Position 2
A7	Dm1	Negative half of the USB 2.0 differential pair-Position 1	B6	Dp2	Positive half of the USB 2.0 differential pair-Position 2
A8	SBU1	Sideband Use(SBU)	B5	CC2	Configuration Channel
A9	VBUS	Bus Power	B4	VBUS	Bus Power
A10	SSR0	Negative half of second SuperSpeed RX differential pair	B3	SSTX0	Positive half of second SuperSpeed TX differential pair
A11	SSR0X	Positive half of second SuperSpeed RX differential pair	B2	SSTX0X	Negative half of second SuperSpeed TX differential pair
A12	GND	Ground return	B1	GND	Ground return

- NOTE:
- MATERIAL:
 - INSULATOR: HIGH TEMPERATURE PLASTIC UL 94 V-0; Black Color
 - CONTACT: C7025(T=0.12mm)
 - SHELL: STAINLESS STEEL(T=0.30mm)
 - INNER GROUND COVER SHELL: STAINLESS STEEL(T=0.10mm)
 - MID PLATE: STAINLESS STEEL(T=0.15mm)
 - ELECTRICAL CHARACTERISTICS:
 - CONTACT RESISTANCE: 40mΩ Max FOR INITIAL, 10mΩ CHANGE AFTER TEST, MEASURE AT 20mV, 100mA.
 - CONTACT CURRENT RATING: 5A FOR COLLECTIVELY POWER SUPPLY PIN(PIN1, A4, A9, A12, B1, B4, B9, B12); 1.25A FOR VCONN PIN: 0.25A FOR OTHER SIGNAL PIN.
 - DIELECTRIC WITHSTANDING VOLTAGE: 100V AC R.M.S.
 - INSULATION RESISTANCE 100MΩ Min.
 - OPERATING TEMPERATURE: -55°C ~ 85°C
 - MECHANICAL CHARACTERISTICS:
 - MATING FORCE: 5-20 N.
 - UNMATED FORCE: 8-20N INITIAL TEST; 6-20N DURABILITY AFTER TEST
 - DURABILITY: 10,000 CYCLES
 - PLATING
 - TERMINAL CONTACT: 5u" GOLD PLATING ON CONTACT AREA, ALL OVER 50u" Min NICKEL AND 1u" Min Matte GOLD ALL OVER 50u" Min NICKEL ON SOLDER AREA
 - SHELL: 50u" Min. NICKEL ALL OVER,
 - INNER GROUND COVER SHELL: CLEAN
 - MID PLATE: CLEAN

RECOMMEND P.C.B LAYOUT (COMPONENT SIDE)
 TOLERANCE FOR PCB LAYOUT IS ± 0.05
 KEEP OUT AREA



Unless otherwise specified, Tolerance:
 X. ±0.30
 X.x ±0.20
 X.xx ±0.15
 X.xxx ±0.10
 Angles ±3°

Pinzan Electronics (Dongguan) Co., Ltd.

DESIGN Li Qingqi	DATE 2021.12.27	Molde code:	
Specifications	USB 3.2 Type-C Receptacle	GT-USB-9009B	
http://www.dg-switch.com		REV.: X1	SCALE: 4:1
TEL: 0769-82388879		UNIT: mm	
		SIZE: A4	SHEET: 1/1