

承 认 书
SPECIFICATION FOR APPROVAL

客户名称 Customer: _____

贵司料号CUSTOMER P/N: _____

敝司料号INTERIOR P/N: WTB01WXXXXXX

贵公司承认印 Approval signatures

| 料号/Part No. | 签章/Signatures |
|-------------|---------------|
| | |

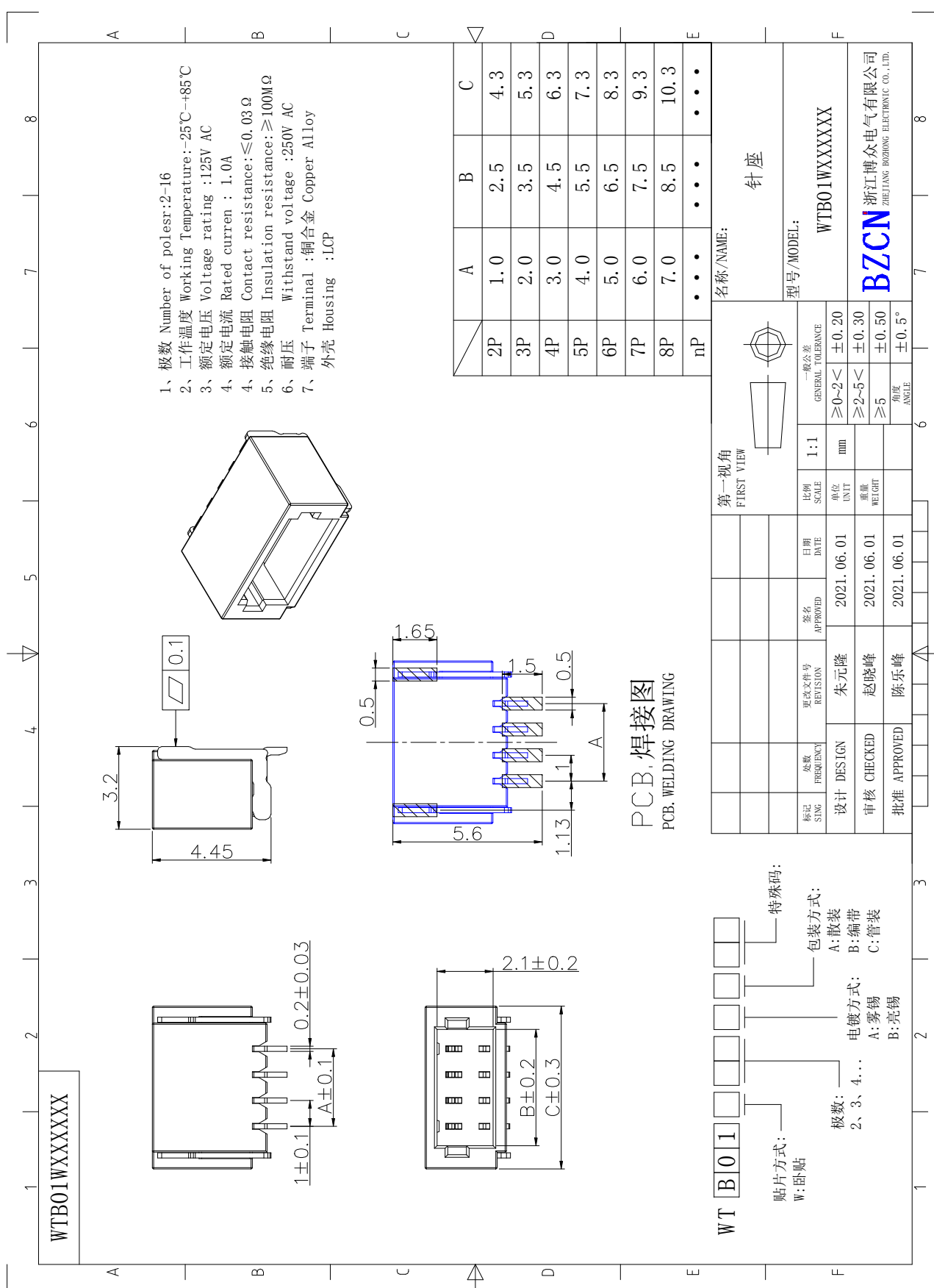
Send us a copy of reference, thank you!

日期 Date: _____

地址: 浙江省乐清市虹桥镇信岙工业区
Add: Xinao Industry Zone Hongqiao Yueqing
Zhejiang
电话/Tel: 86-0577-57573366
传真/Fax: 86-0577-57573373
Http://www.cnbozhong.com
Alibaba: Http://dezhimei.cn.alibaba.com

| | |
|-------------|-----|
| 拟制/Drawn | 朱光隆 |
| 审核/Check | 陈乐峰 |
| 批准/Approved | 陈乐峰 |





SPECIFICATION

1、适用范围

APPLICATION

此规格书适用于线对板连接器的相关要求

This specification is applicable to relevant requirements of wire to board connector

2、使用条件

SERVICE CONDITIONS

2.1 环境温度: -25℃~+85℃

Ambient temperature Range: -25℃~+85℃

3、外观及尺寸

Appearance and Dimension

3.1 产品表面不应有对制品有害的缺陷、污垢、裂痕及机械损伤; 接触件无锈蚀、镀层氧化、脱落等现象

Appearance:Product surface without defect、dirt、crack、and mechanical damang,

Contact without rust,plating not oxided and not peeled

3.2 外形尺寸: 参考图纸

Dimension:According to drawings

4、材料

Material

| 名称 NAME | 材质 MATERIALS |
|-----------------|--------------|
| 主体 Main body | LCP (本色) |
| 端子 Sit uip | 铜合金 |
| 焊护耳 Solder tabs | 铜合金 |

5、电气性能

Electrical Performance

| NO. | 项目 ITEM | 试验条件 TEST CONDITIONS | 要求 REQUIREMENTS |
|-----|-------------------------|---|-----------------|
| 5.1 | 接触电阻 Contact Resistance | 适合嵌合状态; 开放电压20mV 以下; 短路电流 10mA的状态下测定。 Mate applicable and measure by dry circuit, 30mΩ MAX, 10mA | ≤ 30mΩ MAX |

SPECIFICATION

| | | | |
|-----|-------------------------------|--|---|
| 5.2 | 绝缘电阻 Insulation Resistance | 适合嵌合状态；相邻端子间或端子与地面间加DC 100V下测定。 Mate applicable and apply 100V DC between adjacent terminal or ground. | $\geq 100M\Omega$ |
| 5.3 | 耐电压 Dielectric | 适合嵌合状态；相邻端子间或端子与地面间加AC500V（有效值）历时1分钟下测定。 Mate applicable and apply 500V AC(rms)for 1minute between adjacent terminal or ground. | 无击穿、无飞弧 There should be no breakdown and flashover |

6、机械性能：

MECHANICAL SPECIFICATION

| NO. | 项目 ITEM | 试验条件 TEST CONDITIONS | 要求 REQUIREMENTS |
|-----|-----------------------------------|---|--------------------|
| 6.1 | 端子保持力 Terminal Retention Force | 单一端子；以每分钟 $25\pm 3mm$ 的速度平行向外拉 Pull the terminal at the speed rate of $25\pm 3mm$ per minute | $\geq 1.96N$ |

SPECIFICATION

7、 环境和其他性能:

ENVIRONMENTAL PERFORMANCE AND OTHERS

| NO. | 项目 ITEM | 试验条件 TEST CONDITIONS | 要求 REQUIREMENTS |
|-----|---|---|--------------------------|
| 7.1 | 重复拔插 Repeated Insertion and Withdrawal | 无通电状态; 以10次/分钟的速度插拔20次 Insertion and withdrawal catuator up to 20 cycles at the speed rate of less than 10 cyclea/minute | 试验后接触电阻 ≤ 60mΩ |
| 7.2 | 温度上升 Temperature Rise | 适合嵌合状态; 最大容许电流通电, 温度测定。 Carrying rated current load. | 试验后温度上升 ≤ 30℃ |
| 7.3 | 耐热性 Heat Resistance | 适合嵌合状态; 85±2℃的空气中; 放置 96 小时; 再回到室温中放置 1-2 小时 85±2℃, 96 hour | 试验后外观无损坏, 接触电阻 ≤ 60mΩ |

SPECIFICATION

| | | | |
|------------|---|--|---|
| <p>7.4</p> | <p>耐寒性 Cold Resistance</p> | <p>适合嵌合状态：-40±2℃的空气中；放置 96 小时；再回到室温中放置 1-2 小时 -40±2℃， 96 hour</p> | <p>试验后外观无损坏， 接触电阻 ≤ 60mΩ</p> |
| <p>7.5</p> | <p>耐湿性 Humidity</p> | <p>适合嵌合状态； 40±2℃、相对湿度90-95%的空气中；放置 96 小时；再回到室温中 0.5 小时内测定 Temperature: 40±2℃ Relative Humidity: 90-95% Duration: 96 Hours</p> | <p>试验后外观无损坏， 接触电阻 ≤ 60mΩ 满足耐电压测试， 绝缘电阻 ≥ 20MΩ</p> |
| <p>7.6</p> | <p>温度循环 Temperature Cycling</p> | <p>适合嵌合状态； -25±3℃ 30 分钟；常温常湿 10-15 分钟； 85±2℃ 30 分钟；常温常湿 10-15 分钟，循环5次。 5 cycles of: a) -25±3℃ 30 minutes B) 85±2℃ 30 minutes</p> | <p>试验后外观无损坏， 接触电阻 ≤ 60mΩ</p> |

SPECIFICATION

| | | | |
|------------|---|--|--|
| <p>7.7</p> | <p>盐雾试验 Salt Mist (铁材质不做盐雾要求)</p> | <p>在嵌合状态以下列设定条件下进行测量: The switch shall be checked after following test: (1) 温度: 35°C±2°C temperature: 35°C±2°C (2) 盐溶液浓度: 5±1% (质量百分比) salt solution : 5±1%(solids by mass) (3) 时间: 24h Time: 24h 实验后的盐沉积物后水冲掉 After test, salt deposit shall be removed by running water.</p> | <p>金属件上没有腐蚀斑点 No remarkable corrosion shall be recognized in metal part.</p> |
| <p>7.8</p> | <p>可焊性 Solderability</p> | <p>端子前端侵入 235±5°C的锡槽中; 历时 2±0.5 sec. Soldering Time: 2±0.5 sec. Soldering Temperature: 235±5°C 0.2 mm from terminal tip</p> | <p>除边缘外涂层应均匀覆盖 90%以上 Except for the edge, the coating should cover a minimum 90%</p> |

下图为所推荐的回流焊温度曲线图

The following diagram shows the recommended reflow soldering temperature profile.

