

REV.	ECN. NO.	APPD.
A		

NOTES:
 1. MATERIAL: SEE "TABLE 1"
 2. FINISH: SEE "TABLE 1"

3. ELECTRICAL:
 3-1 CONTACT CURRENT RATING:
 5A (VIA5 PIN 1.5A/PIN)

3-2 INSULATION RESISTANCE:
 100 MEGA OHMS MIN. AT 250VDC

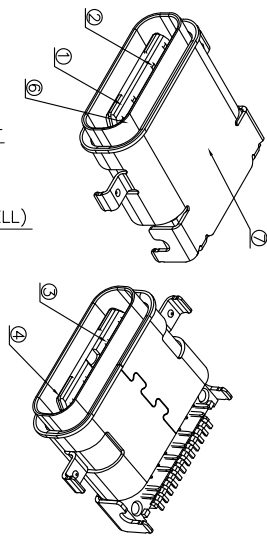
3-3 DIELECTRIC WITHSTANDING VOLTAGE:
 100VAC MIN.

3-4 LOW LEVEL CONTACT RESISTANCE:
 INITIAL 400mΩ MAX.
 AFTER 500mΩ MAX.

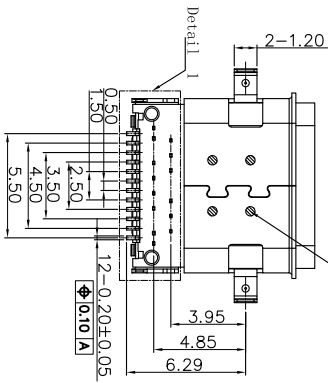
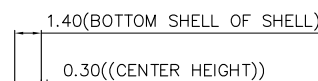
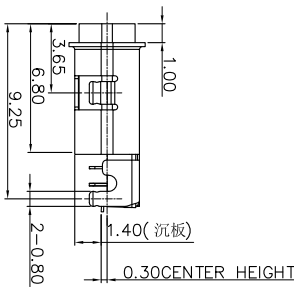
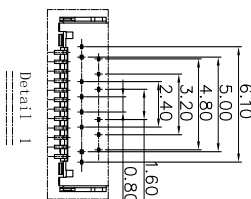
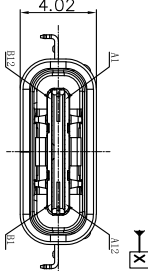
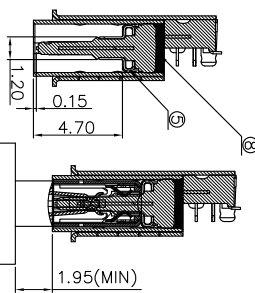
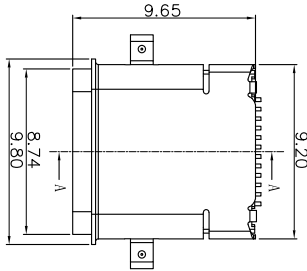
4. MECHANICAL CHARACTERISTICS:

4-1 MATING FORCE: 5-20N;
 4-2 UNMATING FORCE: 2-20N (INITIAL) 6-20N (AFTER 10000 CYCLES);

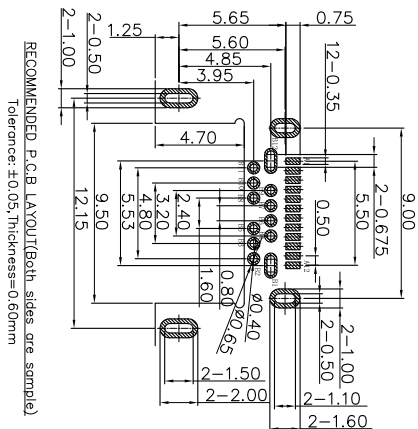
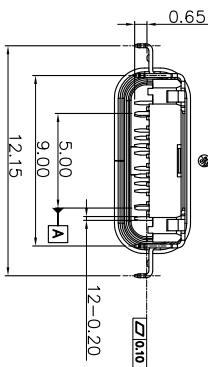
4-3 DURABILITY: 10,000 MATING CYCLES;
 4-4 OPERATING TEMPERATURE: -40°C TO +80°C



SECTION A-A



LASER WELDING POINT



RECOMMENDED PCB LAYOUT (Both sides are same)
 Tolerance: ±0.05, Thickness: 0.60mm



TABLE 1:

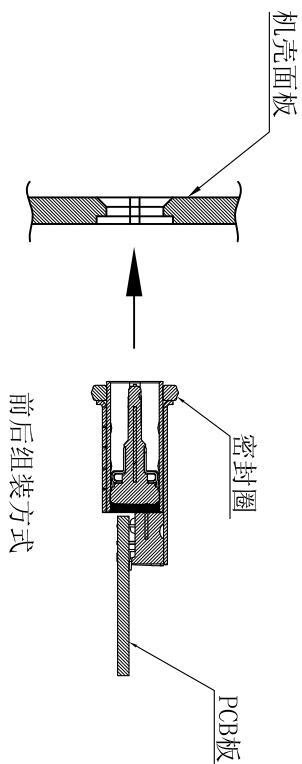
NO.	PART NAME	QTY	MATERIAL	DESCRIPTION	REMARK
⑧	GLUE WATER	1	EPOXY		BLACK
⑦	Shell-2	1	Stainless steel	W PLATING	T=0.20mm
⑥	Shell-1	1	Stainless steel	W PLATING	T=0.20mm
⑤	GND PLATE	1	Stainless steel	W PLATING	T=0.10mm
④	MID PLATE	1	Stainless steel		T=0.15mm
③	Terminal-B	12	铜镍硅合金	Acisr PLATING	T=0.12mm
②	Terminal-A	12			T=0.12mm
①	Housing	1	HIGH TEMP	Block	

X. ±0.30	X°. ±5°	UNITS	mm
X ±0.20	X° ±2°	MATL	
XX ±0.10	XX° ±1°		
XXX ±0.05	XXX° ±0.5°	FINISH	

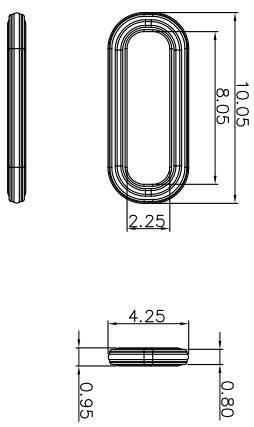
NAME (INTENDED USE)		PART NO. (INTENDED USE)		TITLE:	
TYPE C	CONNECTOR	QTY		MINTRON CO., LTD.	
APPD:	SUNNY	CHKD:	LISA	DWG NO.:	01003-UCAF003-X
DR: ZOE		2022-06-10		SCALE	1/1
				SHEET	1/1
				REV.	A

REV.	ECN. NO.	APPD.
A		

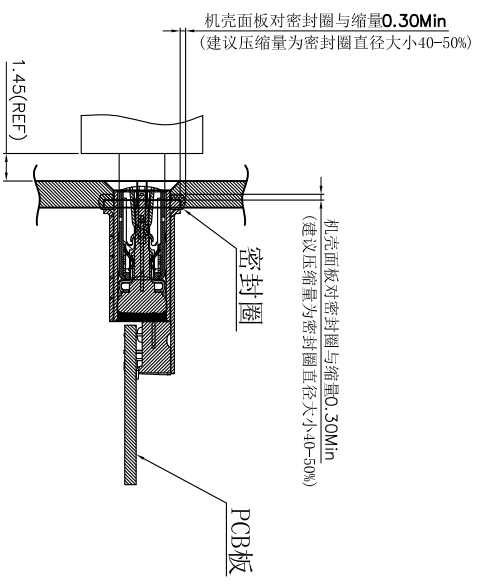
建议密封方式



前后组装方式



建议防水圈规格 (材质硅橡胶)



组装面板后公母头对插示意图

X. ± 0.30	X.° ± 5°	± 5°	UNITS	mm	NAME/(INTENDED USE)	MINTRON CO.,LTD.
.X ± 0.20	.X° ± 2°	± 2°	MATL			
.XX ± 0.10	.XX° ± 1°	± 1°	FINISH			
.XXX ± 0.05	.XXX° ± 0.5°	± 0.5°				
TYPE C CONNECTOR		QTY				
PART NO.(INTENDED USE)		APPD: SUNNY		DWG NO.: 01003-UCAF003-X		
CHKD: LISA		DR: ZOE		TITLE: TYPE C母座沉板DIP+SMT防水I=90 H=1.4		
2022-06-10		SCALE 1/1		SHEET 1/1		
				REV. A		

