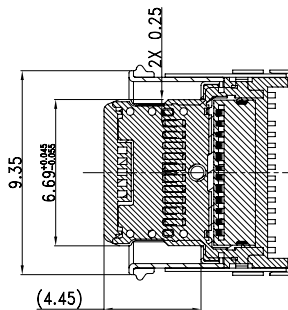
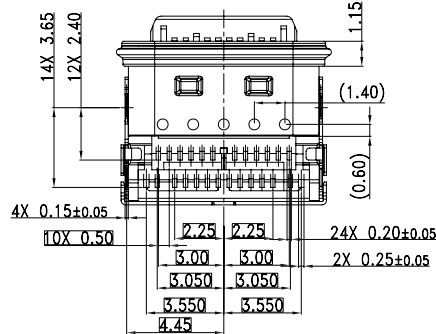
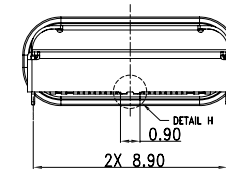
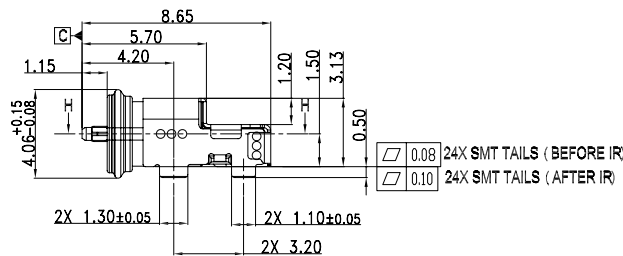
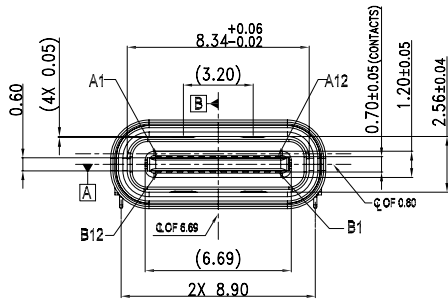
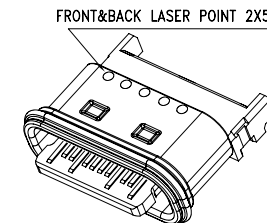
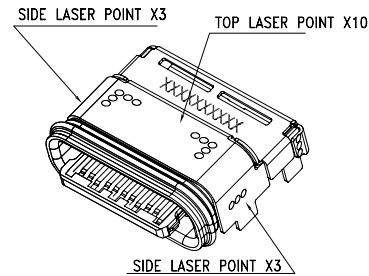


Detail H (Scale : 5:1)

Pin No	Signal Name	Mating Sequence	Pin No	Signal Name	Mating Sequence
A1	GND	First	B12	GND	First
A2	TX1+	Second	B11	RX1+	Second
A3	TX1-	Second	B10	RX1-	Second
A4	Vbus	First	B9	Vbus	First
A5	CC1	Second	B8	SBU2	Second
A6	D+	Second	B7	D-	Second
A7	D-	Second	B6	D+	Second
A8	SBU1	Second	B5	CC2	Second
A9	Vbus	First	B4	Vbus	First
A10	RX2-	Second	B3	TX2-	Second
A11	RX2+	Second	B2	TX2+	Second
A12	GND	First	B1	GND	First
SHELL	GND		SHELL	GND	



SECTION H-H (SCALE 1:1)



深圳市华宇创精密电子有限公司

TOLERANCE:  
 X.X ±0.30  
 X.XX ±0.25  
 X.XXX ±0.15  
 X.' ±2' X.X' ±0.5'

UNIT: mm [inch]  
 SCALE:1:1 SIZE: A4

DRAWN BY :  
 陈一鸣

CHECKED BY:  
 马跃

APPROVED BY:  
 邱敏

DATE :  
 2014-02-23

DATE :  
 2014-02-23

DATE :  
 2014-02-23

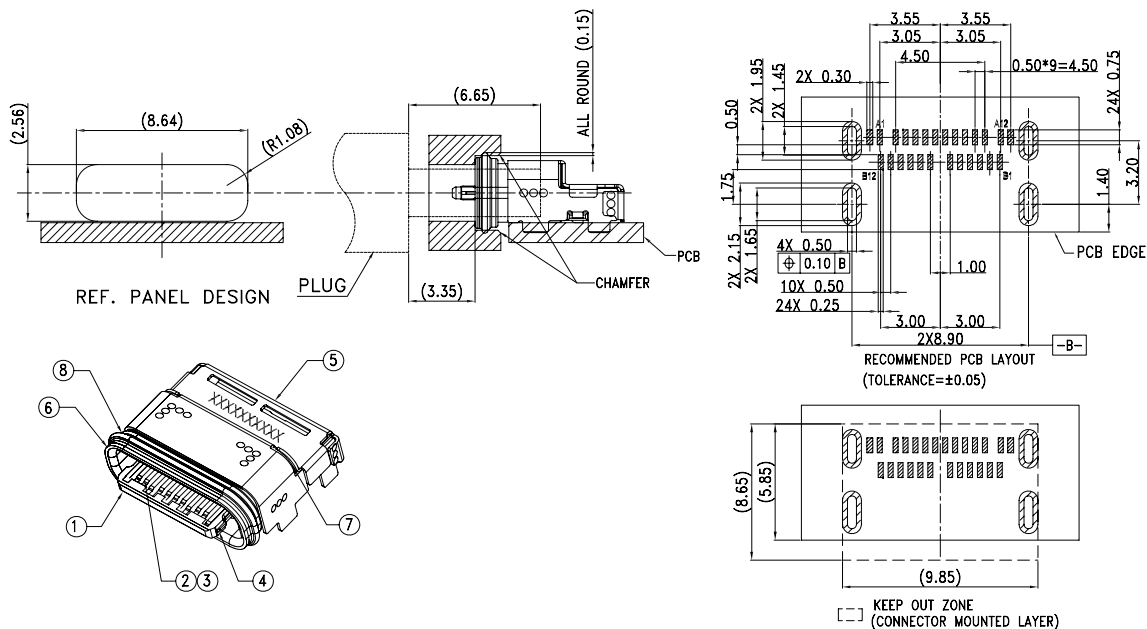
PART NAME:  
 USB TYPE C 母座防水24P CH=1.5mm 双排SMT带铁壳

PART NO. HYCW270-USBC24-150B

MOLD NO.

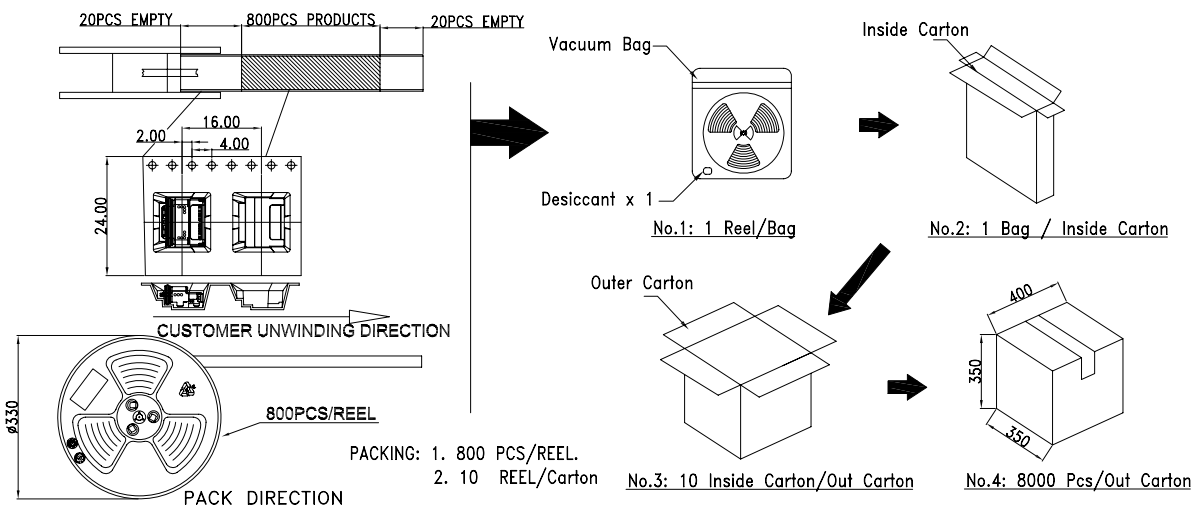
DRAW NO: HYC-2107191356

SHEET NO. 1 OF 1



NOTES/注释:

- MATERIAL/材料: SEE TABLE/见下表
- GENERAL SPECIFICATION/通用特性:
  - COPLANARITY /共面度: 0.10 Max.
  - CURRENT RATING: 5A / 额定电流: 5安培
  - CONTACT RESISTANCE: 40mΩ MAX (INITIAL). INSULATION RESISTANCE: 100MΩ Min  
接触电阻: 40毫欧最大(初始值) / 绝缘电阻: 100MΩ Min
  - DIELECTRIC WITHSTANDING VOLTAGE: 100 VAC  
耐电压: 100伏交流
  - MECHANICAL CHARACTERISTICS:  
INSERTION FORCE: 5~20N EXTRACTION FORCE: 8~20N  
力率特性: 初始插入力: 5~20N 拔出力: 8~20N  
耐久后拔出力: 6~20N
  - DURABILITY: 10000 CYCLES / 耐久性: 10000次
  - PACKAGING TYPE: CARRIER TAPE./ 包装类型: 载带包装
- WATERPROOF CLASS IPX8 / 防水等级 IPX8
- DIMENSIONING SHALL BE INTERPRETED PER ASME Y14.5M 1994.  
尺寸标注基于ASME Y14.5M 1994标准规范
- MATERIAL SHOULD BE FULFILLED AMPHENOL SPEC.# S-SN-002, FOR HALOGEN FREE PRODUCTS, ALSO NEED TO MEET S-SN-004.  
产品材料环保标准为Amphenol SSN#002,如果是无卤产品需满足标准SSN#004



ITEM	DESCRIPTION	Q'TY	MATERIAL	
8	LIM	1	CHN-LIMS	BLACK
7	SMALL SHELL	1	STAINLESS STEEL	NI PLATED OR CLEANING
6	MAIN SHELL	1	STAINLESS STEEL	NI PLATED OR CLEANING
5	OUTOR SHELL	1	STAINLESS STEEL	SOLDER NICKEL: 30" MIN
4	MID PLATE	1	STAINLESS STEEL	NICKEL: 30U" MIN
3	BOTTOM TERMINAL	1	COPPER ALLOY	MATING AREA : AU50"MIN SOLDER TAIL:AU 3~8u", 50~150u" NICKEL OVERALL
2	TOP TERMINAL	1	COPPER ALLOY	MATING AREA : AU50"MIN SOLDER TAIL:AU 3~8u", 50~150u" NICKEL OVERALL
1	MOLDING HOUSING	1	HIGH TEMPERATURE PLASTIC	BLACK

BILL OF MATERIAL



深圳市华宇创精密电子有限公司

TOLERANCE: X.X ±0.30 X.XX ±0.25 X.XXX ±0.15 X." ±2" X.X" ±0.5"	DRAWN BY : 陈一鸣	DATE : 2014-02-23	PART NAME: USB TYPE C 母座防水24P CH=1.5mm 双排SMT带铁壳
	CHECKED BY: 马跃	DATE : 2014-02-23	PART NO. HYCW270-USBC24-150B
UNIT: mm [inch] SCALE:1:1 SIZE: A4	APPROVED BY: 邱敏	DATE : 2014-02-23	MOLD NO.
			DRAW NO: HYC-2107191356
			SHEET NO. 1 OF 1