

NO.	Model Number	MATERIAL	鍍金3u"
1.	H5. 60mm 24Pin	PALOT BLACK	1024-FGR001
2.	H5. 60mm 24Pin	LCP BLACK	1024-FGR003
3.	H6. 50mm 24Pin	PALOT BLACK	1024-FGR005
4.	H6. 50mm 24Pin	LCP BLACK	1024-FGR007
5.	H6. 80mm 24Pin	PALOT BLACK	1024-FGR00*
6.	H6. 80mm 24Pin	LCP BLACK	1024-FGR00*
7.	H5. 60mm 16Pin	PALOT BLACK	1016-FGR387
8.	H5. 60mm 16Pin	LCP BLACK	1016-FGR389
9.	H6. 50mm 16Pin	PALOT BLACK	1016-FGR391
10.	H6. 50mm 16Pin	LCP BLACK	1016-FGR393
11.	H6. 80mm 16Pin	PALOT BLACK	1016-FGR***
12.	H6. 80mm 16Pin	LCP BLACK	1016-FGR***

SECTION A-A

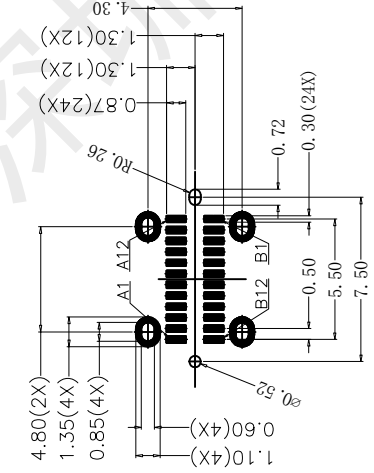
Note: 24pin with ground plate; 16pin without ground plate;

NO.	PART NAME	QTY	MATERIAL	FINISH
1	Shell	1	SUS304-1/2H, T=0.30mm	50u"Ni Min.
2	TERMINAL	2	C7025 TMO4, T=0.12mm	1u" Au/50u"Ni Min.
3	MID PLATE	1	SUS301-H, T=0.15mm	wash
4	GROUND PLATE	2	SUS301-H, T=0.10mm	wash
5	Housing	1	LCP or PA	UL 94 V-0

CUSTOMER UNLESS SPECIFIED APPROVED BY: 罗孝金
 SIZE X±0.50 X'±5.0' CHECKED BY: 钟德华
 A4 MM[INCH] .X±0.35 .X'±3.0' DESIGN BY: 李春风
 SCALE REV. .XX±0.25 .XX'±2.5' DWG NO.:
 1:1 A .XXX±0.15 .XXX'±2.0'

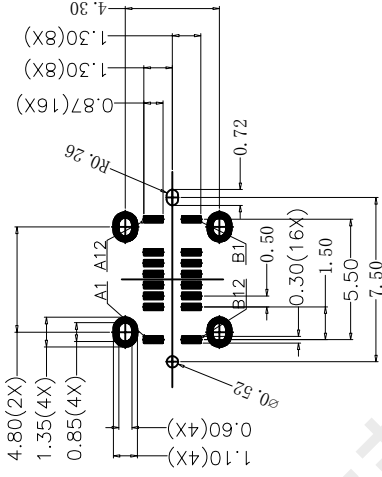
TITLE: TYPE-C 16PLT-H6.5
 PART NO.: See the List
 SHEET 1/3

RECOMMENDED P.C.B. LAYOUT(24 Pin)



TOLERANCE UNSPECIFIED $\pm 0.05\text{mm}$
RECOMMENDED PCB THICKNESS: $0.8 \pm 0.10\text{mm}$

RECOMMENDED P.C.B. LAYOUT(16 Pin)



TOLERANCE UNSPECIFIED $\pm 0.05\text{mm}$
RECOMMENDED PCB THICKNESS: $0.8 \pm 0.10\text{mm}$

SPECIFICATION:

- MATERIAL:
 - 1-1.HOUSING&MOLDING:HIGH TEMPERATURE RESISTANT PLASTIC,UL94 V-0 COLOR:BLACK
 - 1-2.CONTACTS: COPPER ALLOY T=0.12mm
 - 1-3.SHELL: STAINLESS STEEL SUS304-1/2H,T=0.30
 - 1-4.MID PLATE: STAINLESS STEEL(SUS301)T=0.15mm
 - 1-5.EMI PLATE: STAINLESS STEEL(SUS301)T=0.10mm
- PLATING SPECIFICATION:
 - 2-1.CONTACTS:
 - Ni 50 μ MIN. UNDER PLATED OVER ALL.
 - Au PLATED ON THE MATING AREA OF CONTACT.
 - WATTE SN PLATED ON THE SOLDER AREA.
 - 2-2.SHELL: Ni 30 μ MIN. UNDER PLATED OVER ALL.
 - 2-3.MID PLATE: CLEAR ONLY
 - 2-4.EMI PLATE: CLEAR ONLY
- MECHANICAL:
 - 3.1.MATING FORCE: 0.5~2.0kgf;
 - 3.2.UNMATING FORCE: 0.8~2.0kgf.
 - 3.3.DURABILITY: 10000 CYCLES;
- ELECTRICAL:
 - 4.1.CURRENT RATING: 5A Max;
 - 4.2.VOLTAGE RATING: 20V Max;
 - 4.3.DIELECTRIC WITHSTANDING VOLTAGE: 100VAc;
 - 4.4.CONTACT RESISTANCE: 40m Ohms Max.;
 - 4.5.INSULATION RESISTANCE: 100M Ohms Min.;
- ENVIRONMENTAL:
 - 5.1.OPERATING TEMPERATURE: -40°C~+85°C;
 - 5.2.WETTING TEMPERATURE: 265 ± 5 °C, 5 ± 0.5 s

USB TYPE-C 24PIN ASSIGNMENTS

PIN NUMBER	SIGNAL NAME	PIN NUMBER	SIGNAL NAME
A1	GND	B12	GND
A2	SSTXp1	B11	SSTXp1
A3	SSTXn1	B10	SSTXn1
A4	VBUS	B9	VBUS
A5	CC1	B8	SBU2
A6	Dp1	B7	Dn2
A7	Dn1	B6	Dp2
A8	SBU1	B5	CC2
A9	VBUS	B4	VBUS
A10	SSRXn2	B3	SSRXn2
A11	SSRXp2	B2	SSRXp2
A12	GND	B1	GND

USB TYPE-C 16PIN ASSIGNMENTS

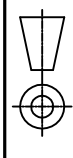
PIN NUMBER	SIGNAL NAME	PIN NUMBER	SIGNAL NAME
A1	GND	B12	GND
A4	VBUS	B9	VBUS
A5	CC1	B8	SBU2
A6	Dp1	B7	Dn2
A7	Dn1	B6	Dp2
A8	SBU1	B5	CC2
A9	VBUS	B4	VBUS
A12	GND	B1	GND

VER	MARK	PR. BY	ECR/ECN DESCRIPTION	DATE

CUSTOMER		GENERAL TOLERANCES UNLESS SPECIFIED		APPROVED BY:	TITLE:
SIZE	UNITS	X ± 0.50	X' $\pm 5.0^{\circ}$	罗孝金	TYPE-C 16PLT-H6.5
A4	MM[INCH]	.X ± 0.35	.X' $\pm 3.0^{\circ}$	钟华华	PART NO:
SCALE	REV.	.XX ± 0.25	.XX' $\pm 2.5^{\circ}$	DESIGN BY: 李春风	See the List
1:1	A	.XXX ± 0.15	.XXX' $\pm 2.0^{\circ}$	DWG NO.:	

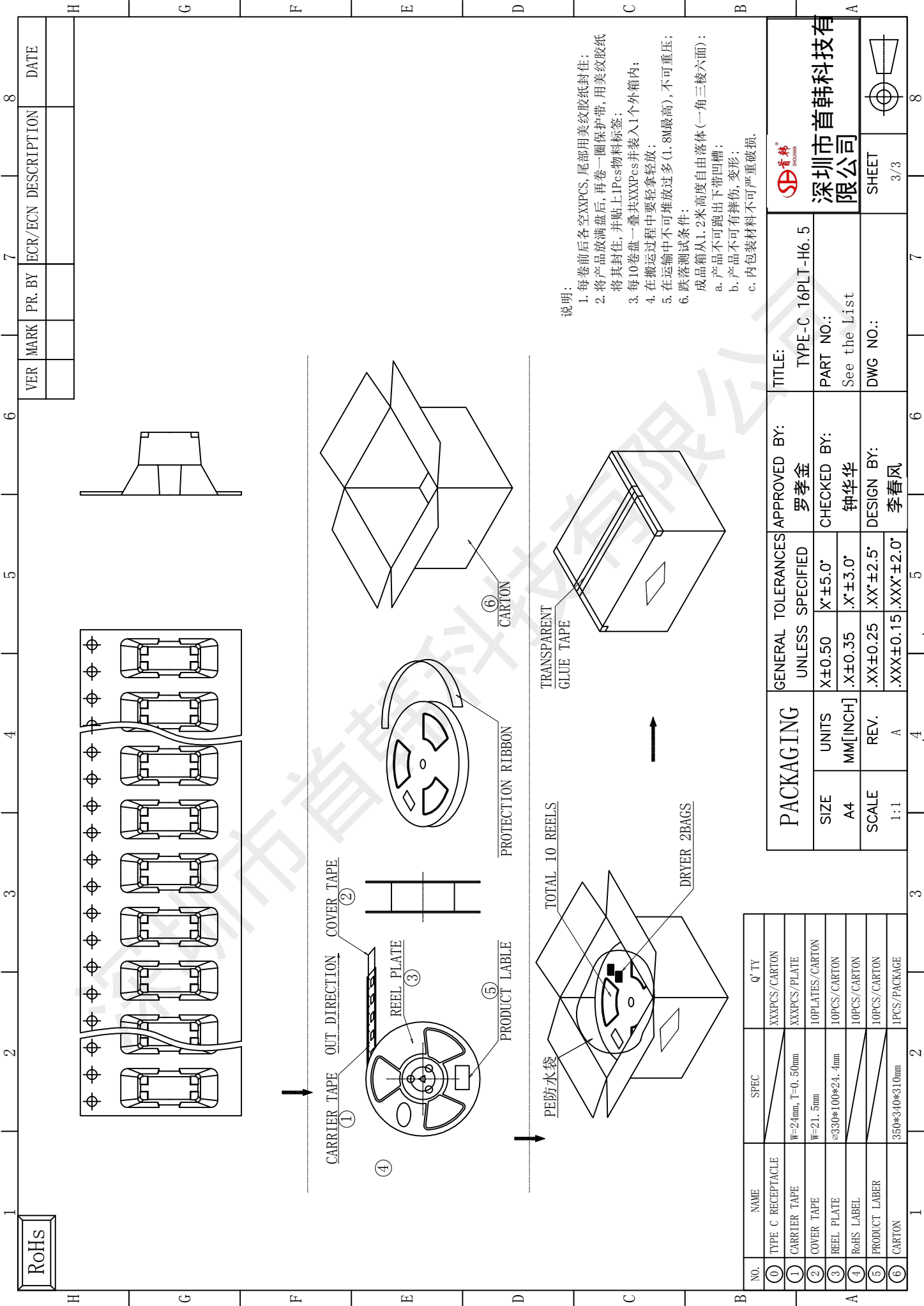


深圳市首韩科技有限公司



SHEET 2/3

RoHs



说明:
 1. 每卷前后各空XXPCS, 尾部用美纹胶纸纸封住;
 2. 将产品放满盘后, 再卷一圈保护带, 用美纹胶纸将其封住, 并贴上1Pcs物料标签;
 3. 每10卷盘一叠共XXXPcs并装入1个外箱内;
 4. 在搬运过程中要轻拿轻放;
 5. 在运输中不可堆放过高(1.8M最高), 不可重压;
 6. 跌落测试条件:
 成品箱从1.2米高度自由落体(一角三棱六面):
 a. 产品不可跑出下带凹槽;
 b. 产品不可有摔伤, 变形;
 c. 内包装材料不可严重破损.

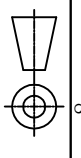
NO.	NAME	SPEC	Q' TY
①	TYPE C RECEPTACLE		XXXPCS/CARTON
②	CARRIER TAPE	W=24mm, T=0.50mm	XXXPCS/PLATE
③	COVER TAPE	W=21.5mm	10PLATES/CARTON
④	REEL PLATE	ø330*100*24.4mm	10PCS/CARTON
⑤	RoHS LABEL		10PCS/CARTON
⑥	PRODUCT LABELER		10PCS/CARTON
⑦	CARTON	350*340*310mm	1PCS/PACKAGE

PACKAGING			GENERAL TOLERANCES UNLESS SPECIFIED		APPROVED BY:	
SIZE	UNITS	REV.	X'±0.50	X'±5.0'	罗孝金	
A4	MM[INCH]	A	.X'±0.35	.X'±3.0'	CHECKED BY:	钟华华
SCALE			.XX±0.25	.XX'±2.5'	DESIGN BY:	李春风
			.XXX±0.15	.XXX'±2.0'		

TITLE:		TYPE-C 16PLT-H6.5	
PART NO.:	See the List		
DWG NO.:			



深圳市首韩科技有
 限公司



SHEET 3/3



深圳市首韩科技有限公司
SHENZHEN SHOUHAN TECHNOLOGY CO., LTD
Tel: 0755-27597601 Fax: 0755-27597491

承 认 书
SPECIFICATION FOR APPROVAL

客 户 Customer:

产品名称 Project:

TYPE-C

规格型号 Part No:

16PLT-H6.5

贵公司承认印 Approval signatures

料 号/Part No.	签 章/Signatures

日期 Date:

拟制/Drawn	李春风	
审核/Check	钟华华	
批准/Approved	罗孝金	

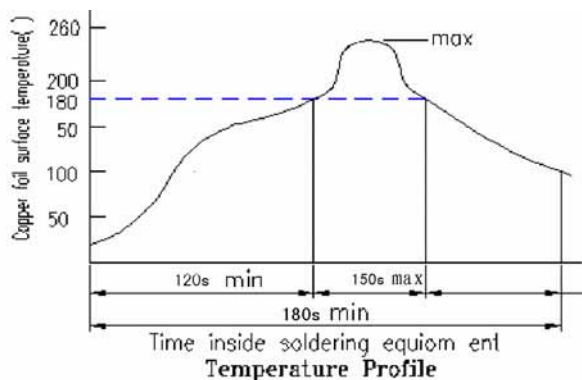


RATING (额定值):		DC 20V	5A
PRACTICAL TEMPERATURE RANGE 使用温度范围	-40~85° C 在-40° C~+85° C 温度内使用		
STANDARD ATMOSPHEIC CONDITIONS 测试标准状况	<p>UNLESS OTHERWISE SPECIFIED THE STANDARD RANGE OF ATMOSPHERIC CONDITIONS FOR MAKING MEASUREMENTS AND TESTS ARE AS FOLLOWS:</p> <p>(1) BETWEEN BODY AND CONDUCTOR: 5° C TO 35° C (2) BETWEEN CONDUCTORS NOT TO BE CONTACT: 45% TO 85% (3) PRESSURE: 86Kpa TO 106Kpa</p> <p>在没有指定的情况下测试温度、湿度、气压如下:</p> <p>(1) 温度为 5° C~35° C (2) 湿度为 45%~85% (3) 气压为 86 Kpa~106Kpa</p>		
MECHANICAL (机械性能)			
ITEM 项目		TEST CONDITIONS 测试条件	PERFORMANCE 规格
1	CONNECTION FORCE 插入力度	MEASUREMENT SHALL BE MADE AFTER CONNECTING AND DISCONNECTING USING STANDARD PLUG GAUGE 3 TIMES. 依据标准的 PLUG GAUGE 做第 3 次拔插后测定	0.5-2.0kgf
	DISCONNECTI ON FORCE 拔出力度	MEASUREMENT SHALL BE MADE AFTER CONNECTING AND DISCONNECTING USING STANDARD PLUG GAUGE 3 TIMES. 依据标准的 PLUG GAUGE 做第 3 次拔插后测定	0.8-2.0kgf
2	TERMINAL STRENGTH 端子强度	A STATIC LOAD OF 0.1N/m(1kgf/cm)SHALL BE APPLIED TO THE TIP OF THE TERMINAL FOR 1 MIN IN ANY DIRECTION 向排脚先端的任意一个方向加 1 分钟 0.1N/m(1kgf/cm)的力度.	THERE SHALL BE NO DAMAGE TO THE TERMINAL SUCH AS CRACKS, LOOSENESS OR PLAY ELECTRICAL ,AND MECHANICAL CHARACTERISTICS SHALL BE SATISFIED 在排脚中没有裂开、松动等异常, 满足于机械、电气性能
ELECTRICAL (电气性能)			
ITEM 项目		TEST CONDITIONS 测试条件	PERFORMANCE 规格
3.1	CONTACT RESISTANCE 接触电阻	MEASURED AT SMALL CURRENT (100m A OR LESS) 1000Hz 在微小电流 (100 m A) 以下测试	40m Ω MAX
3.2	INSULATION RESISTANCE 绝缘电阻	APPLY A VOLTAGE OF 100V DC FOR 1 MIN TO FOLLOWING PORTIONS AFTER WHICH MEASUREMENT SHALL BE MADE: (1) BETWEEN BODY AND CONDUCTOR (2) BETWEEN CONDUCTORS NOT TO BE CONTACT (3) BETWEEN CONDUCTORS NOT TO BE WHEN PLUG IS INSERTED DC100V 1 MIN 输入 100V DC 电压 1 分钟, 按以下接触方法测试: (1) 插座体与排脚之间 (2) 不接触的排脚之间 (3) 插头插入时不接触排脚之间	100M Ω MIN

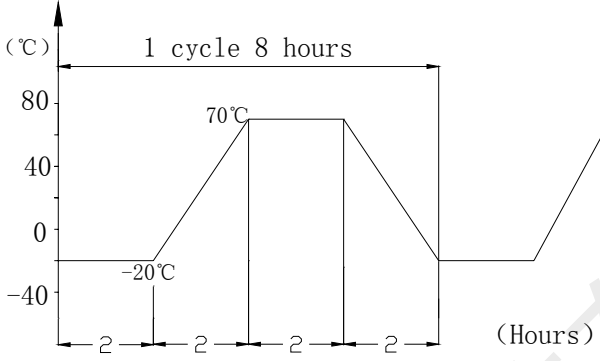
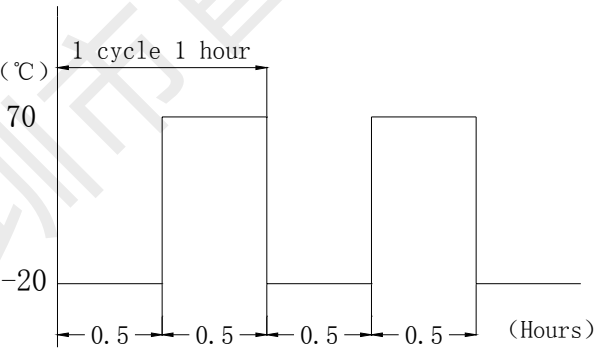
3.3	DIELECTRIC STRENGTH 耐电压	AC 100V 5ms(50~60Hz)FOR 1 MIN TRIP CURRENT:0.5mA (1) BETWEEN BODY AND CONDUCTOR (2) BETWEEN CONDUCTORS NOT TO BE CONTACT (3) BETWEEN CONDUCTORS NOT TO BE WHEN PLUG IS INSERTED DC 100V 1 MIN 输入 AC 100V (50Hz) /min 电压 1 分钟感度电流为 0.5mA, 按以下接触方法测试: (1) 插座体与排脚之间 (2) 不接触的排脚之间 (3) 插头插入时不接触排脚之间	WITHOUT DAMAGE TO PARTS ARCING OR BREAKDOWN ETC 没有绝缘破坏等异常
-----	-----------------------------------	---	--

URABILITY (耐久性)

ITEM 项目	TEST CONDITIONS 测试条件	PERFORMANCE 规格
4. 1	SOLDERABILITY TEST 可焊性试验 THE TOP OF THE TERMINALS SHALL BE DIPPED 1mm IN THE SOLDER BATH OF 250±5°C FOR 5±0.5 SECONDS 端子顶部被浸入锡池中 1mm 深,温度为 250±5°C,时间为 5±0.5 秒	(1) SOLDER WETTING TIME SHALL BE 3 SEC OR LESS 焊接时间应少于 3 秒 (2) THE AREA OF SOLDERING SHOULD BE OVER 75% 焊接面积应有 75%以上
4.2	RESISTANCE TO SOLDERING HEAT TEST 耐焊性试验 REFLOW SOLDERING CONDITIONS: PREHEAT:TEMPERATURE ON THE COPPER FOIL SURFACE SHOULD REACH 180 .120S AFTER THE P.C.B ENTERED INTO THE SOLDERING EQUIPMENT. TALLEST TEMPERATURE:TEMPERATURE ON THE COPPER FOIL SURFACE SHOULD REACH THE PEAK TEMPERATURE OF 260±5 WITH IN 20 SECONDS. 过回流焊条件: 预热:电镀层表面的温度应达到 180°C,120s 后电路板进入回流焊设备。 最高温度:电镀层表面温度最高为 260±5°C且停留不超过 20 秒。	WITHOUT DEFOR MATION OF CASE OR EXCESSIVE LOOSENESS OF TEMINALS ELECTRICAL CHARACTERISTICS SHALL BE SATISFIED 本体无变形, 满足于机械、电气性能



4. 2	<p>RESISTANCE TO SOLDERING HEAT TEST 耐焊性试验</p>	<p>SOLDERING IRON METHOD: BIT TEMPERATURE $330 \pm 5^{\circ}\text{C}$ APPLICATION TIME OF SOLDERING IRON $3 \pm 0.5 \text{ SEC}$ HOWEVER EXCESSIVE PRESSURE SHALL NOT BE APPLIED TO THE TERMINAL 手焊接的时候温度需控制在 $330 \pm 5^{\circ}\text{C}$, 时间为 3 ± 0.5 秒, 但不能在排脚上施加异常压力。</p>	<p>WITHOUT DEFORMATION OF CASE OR EXCESSIVE LOOSENESS OF TEMINALS ELECTRICAL CHARACTERISTICS SHALL BE SATISFIED 本体无变形, 满足于机械、电气性能</p>
4. 3	<p>HUMIDITY TEST 潮湿试验</p>	<p>THE JACK SHALL BE STORED AT A TEMPERATURE OF $40 \pm 2^{\circ}\text{C}$ AND A HUMIDITY OF 90% TO 96% FOR 96 Hr, THEN THE JACK SHALL BE MAINTAINED AT STANDARD ATMOSPHERIC CONDITION FOR 1 Hr FOR OTHER PROCEDURES 放置 $40 \pm 2^{\circ}\text{C}$ 的相应湿度为 90~96% Hr 环境中 96 小时后, 再将样板放在正常环境中 1 小时后进行测试</p>	<p>THERE SHALL BE NO DAMAGE ON APPEARANCE. MECHANICAL AND ELECTRICAL CHARACTERISTICS SHALL BE SATISFIED 外观无异常, 满足于机械、电气性能。</p>
4.4	<p>HEAT TEST 耐热试验</p>	<p>THE JACK SHALL BE STORED AT A TEMPERATURE OF $70 \pm 2^{\circ}\text{C}$ FOR 96 HOURS, AND THEN IT SHALL BE SUBJECTED TO THE CONTROLLED RECOVERY MBASURBM 放置在温度 $70 \pm 2^{\circ}\text{C}$ 中测试 96 小时后, 再放置正常室温中 1 小时来测定</p>	
4. 5	<p>COLD TEST 耐寒试验</p>	<p>THE JACK SHALL BE STORED AT A TEMPERATURE OF $-25 \pm 3^{\circ}\text{C}$ FOR 96 HOURS AND THEN IT SHALL BE SUBJECTED TO THE CONTROLLED RECOVERY CONDITIONS FOR 1 HOUR AFTER WHICH 放置在温度 $-25 \pm 3^{\circ}\text{C}$ 中 96 小时后, 再放置常温常湿中 1 小时来测定</p>	<p>THERE SHALL BE NO DAMAGE ON APPEARANCE MECHANICAL AND ELECTRICAL CHARACTERISTICS SHALL BE SATISFIED 外观无异常, 满足于机械、电气性能</p>
4. 6	<p>LIFE TEST 寿命试验</p>	<p>WITHOUT LOAD CONNECTION AND DISCONNECTION SHALL BE MADE WITH THE MATING PLUGS AND JACKS FOR 10000 CYCLES AT A SPEED OF 10 TO 25 CYCLES/MIN 无负荷 将结合了的的标准 Plug (尽量要近于中心的) 在 1 分钟内以 10-25 的速度, 进行 10000 次插入, 拔出 LOAD: AT RATING CONDITION (NON-INDUCTIVE LOAD) CONNECTION AND DISCONNECTION SHALL BE MADE 10000 CYCLES AT A SPEED 10 TO 20 CYCLES / MIN 负荷 以定格状态(无诱导负荷)在 1 分钟内以 10-20 次的速度进行 10000 次插入、拔出</p>	<p>(1) CONTACT RESISTANCE SHALL BE $\leq 0.1 \Omega$ (2) DISCONNECTION FORCE SHALL BE 0.8 TO 2.0N (3) MECHANICAL AND ELECTRICAL CHARACTERISTICS SHALL BE SATISFIED (1) 接触电阻 $\leq 0.1 \Omega$ (2) 拔出力是 0.8~2.0N (3) 其它: 满足于机械、电气性能</p>

<p>4.7</p>	<p>TEMPERATURE CYCLING TEST 温度循环测试</p>	<p>THE JACK SHALL BE SUB JECTED TO 5 CYCLES OF THE FOLLOWING CONDITIONS SHOWN IN THE FIGURE,AND THEN SHALL RETURNED ALLOWED TO REMAIN IN ROOM AMBIENT CONDITION FOR 30 MINUTES 将插座以下列条件作 5 个循环，然后放回室内环境 30 分钟</p> <p>Temp(°C)</p>  <p>(Hours)</p>	<p>THERE SHALL BE NO DEFORMATION OR CRACKS IN MOLDED PART. INSERTION & EXTRACTION FORCE:3 TO 20N CONTACT RESISTANCE:MAX.30M Ω INSULATION RESISTANCE: MIN.100 M Ω DIELECTRIC WITHSTANDING VOLTAGE: 100VAC/MIN(BETWEEN TERMINALS)</p> <p>产品不能变形与破裂 插拔力: 3N 至 20N 接触电阻: 最大 30m Ω 绝缘电阻: 最小 100 M Ω 绝缘耐压: 最小 100VAC (端子之间)</p>
<p>4.8</p>	<p>COLD&HEAT SHOCK TEST 冷热冲击测试</p>	<p>THE JACK SHALL BE SUBJECTED TO 5 CYCLES OF THE FOLLOWING CONDITIONS SHOWN IN THE FIGURE,AND THEN SHALL RETURNED AND ALLOWED TO REMAIN IN ROOM AMBIENT CONDITION FOR 30 MINUTES 将插座以下列条件作 5 个循环，然后放回室内环境 30 分钟</p> <p>TEMP (°C)</p>  <p>(Hours)</p>	<p>THERE SHALL BE NO DEFORMATION OR CRACKS IN MOLDED PART. INSERTION & EXTRACTION FORCE:3 TO 25N CONTACT RESISTANCE:MAX.30M Ω INSULATION RESISTANCE: MIN.100 M Ω DIELECTRIC WITHSTANDING VOLTAGE: 500VAC/MIN(BETWEEN TERMINALS)</p> <p>产品不能变形与破裂 插拔力: 3N 至 25N 接触电阻: 最大 30m Ω 绝缘电阻: 最小 100 M Ω 绝缘耐压: 最小 500VAC (端子之间)</p>