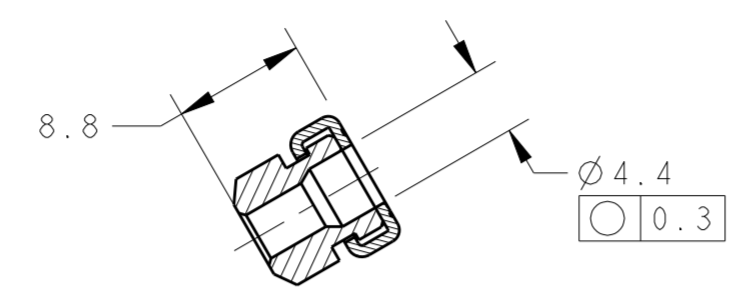
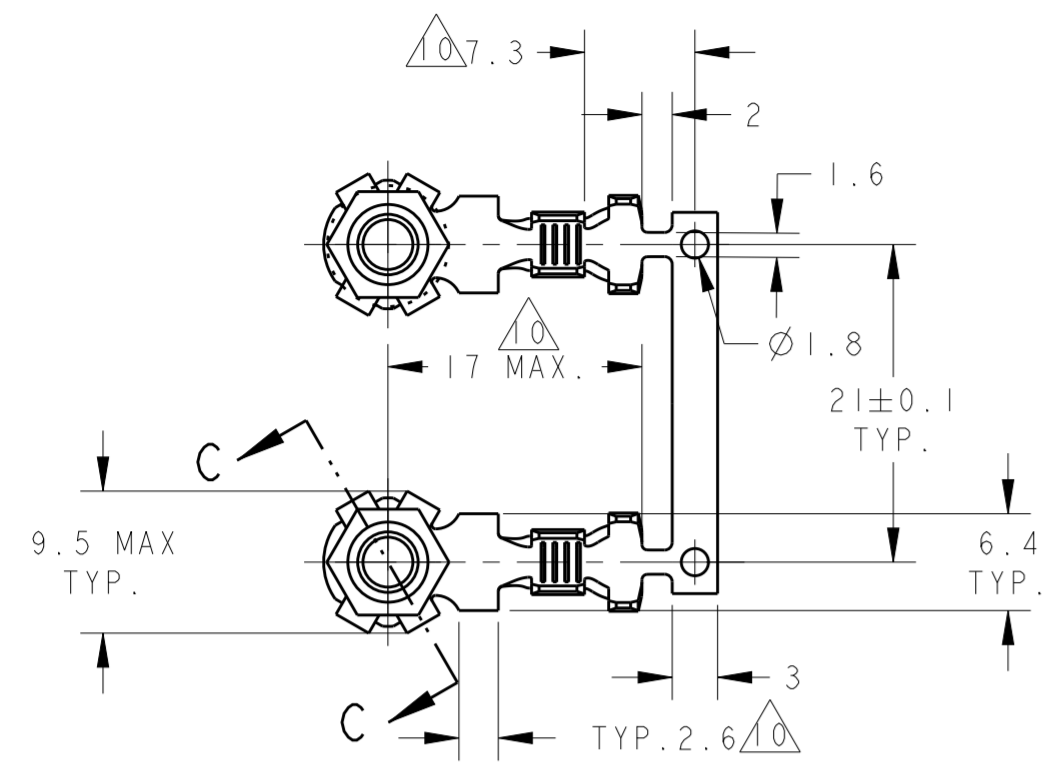
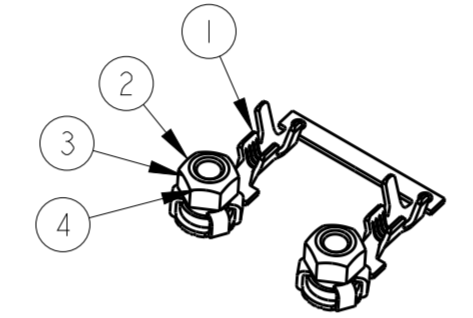


THIS DRAWING IS UNPUBLISHED. RELEASED FOR PUBLICATION
 © COPYRIGHT - BY - ALL RIGHTS RESERVED.

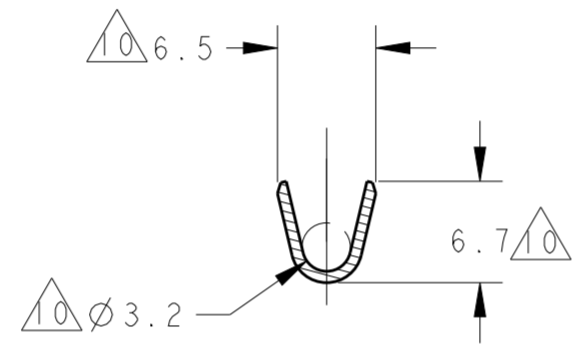
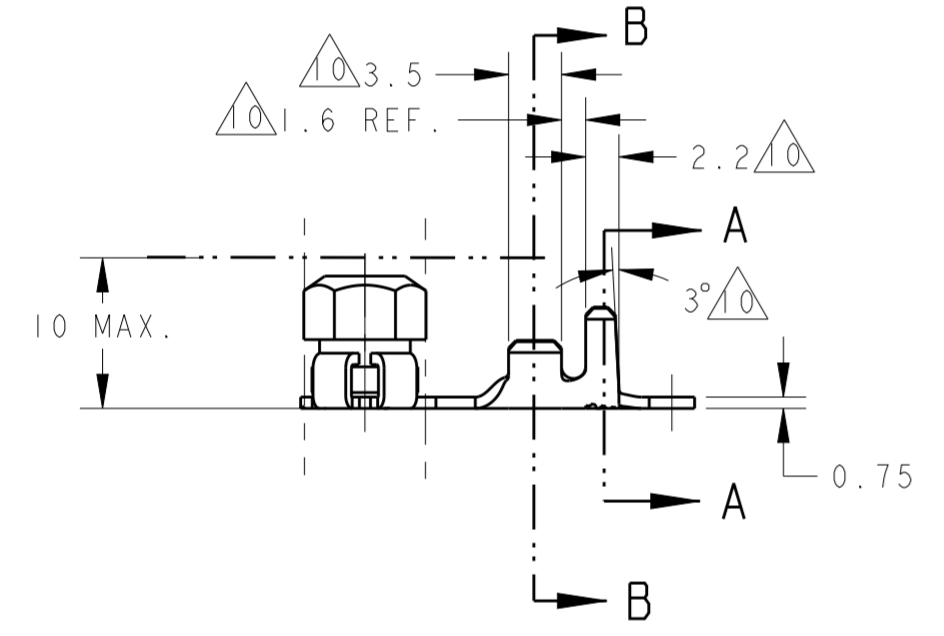
REVISIONS					
P	LTR	DESCRIPTION	DATE	DWN	APVD
D1		ECO-13-009543 ADD P/N	28JUN13	CZ	WY
D2		ECO-15-012967	09SEP15	JS	WY
D3		ECR-19-000800	21JAN19	J.Y	E.J
D4		ECR-19-004068	14MAR19	J.Y	E.J



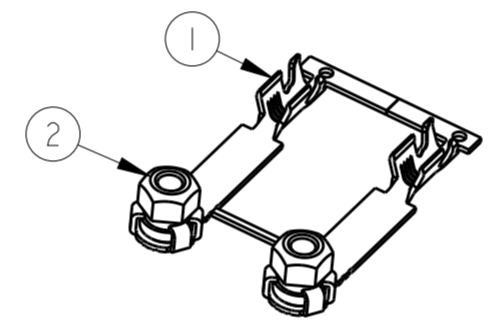
SECTION C-C



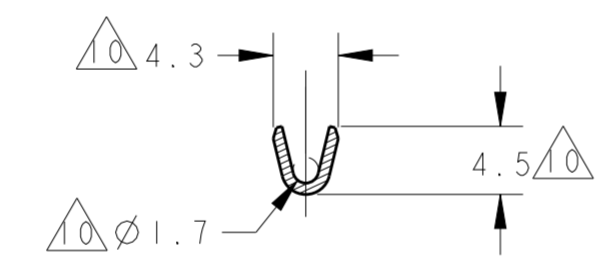
SCALE 1:1
ISOMETRIC FOR -1/-3/-5



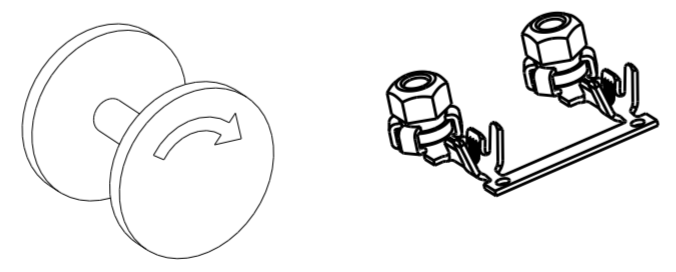
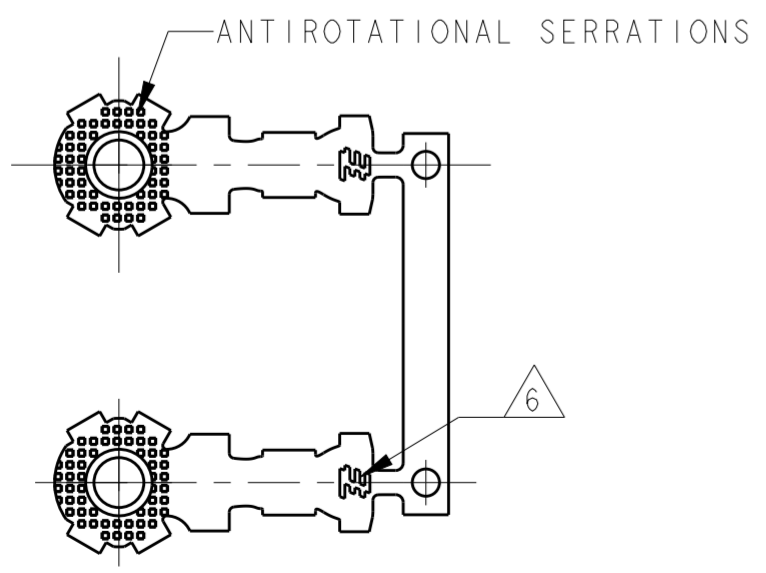
SECTION A-A



SCALE 1:1
ISOMETRIC FOR -6



SECTION B-B



SCALE 1:1

DIRECTION OFF TOP OF REEL
ACC. TO TE SPEC. 107-3

- FOR 2050216-1 TO -5, WIRE BARREL AND ISULATION FOR "F" CRIMP FOR 2050216-6, SEE SPEC 114-101016
- FOR 2050216-1 TO -5,
WIRE CRIMP WIDTH: .140Inches (3.56mm) "F"
INSULATION CRIMP WIDTH: .180Inches (4.57mm) "F"
WIRE CRIMP HEHT: 2.33mm (WIRE SIZE 1.50mm²)
2.43mm (WIRE SIZE 2.00mm²)
2.57mm (WIRE SIZE 2.50mm²)
FOR 2050216-6, SEE SPEC 114-101016
- QUANTITY: 1000PCS PER REEL.
- SW7x M4, SPIRALOCK OR EQUIVALENT NUT, LOW CARBON STEEL, ZINC PLATING BICHROMATED (TRIVALENT CHROMATE).
- THE TORQUE SPECIFIED FOR NUT TERMINAL IS 1.8±0.3Nm.
- TE LOGO.
- SW7x M4, SPIRALOCK OR EQUIVALENT NUT, LOW CARBON STEEL, NICKEL PLATING.
- SW7x M4-6H, NORMAL THREAD, LOW CARBON STEEL, ZINC PLATING BICHROMATED (TRIVALENT CHROMATE).

- PART 2050216-1/-3/-5 SHOWN ON SHEET1
PART 2050216-6 SHOWN ON SHEET2
- DIMS WITHOUT $\Delta 0$ ARE FOR ALL PARTS (2050216-1/-3/-5/-6)
- $\Delta 0$ DIMS FOR PART 2050216-1/-3/-5
- $\Delta 1$ DIMS FOR PART 2050216-6

REQ. PRE ASSY	DESCRIPTION	MATERIAL	FINISH	ITEM
1	NUT M4			4
1	NUT M4			3
1	NUT M4			2
1	TERMINAL	PHOS. BRONZE	PRE-TIN	1
6	-5	-3	-1	
2050216				

>1.0-2.5 mm ²	Ø 2.20-3.00
WIRE RANGE	INS. RANGE

THIS DRAWING IS A CONTROLLED DOCUMENT.

DWN: S. ZHU 02NOV09
 CHK: W. YUAN 13NOV09
 APVD: K. ODA 13NOV09

DIMENSIONS: mm
 TOLERANCES UNLESS OTHERWISE SPECIFIED:
 0-1.0 ±0.3
 1-1.0 ±0.1
 2-1.0 ±0.01
 3-1.0 ±0.001
 4-1.0 ±0.0001
 ANGLES ±3°
 FINISH

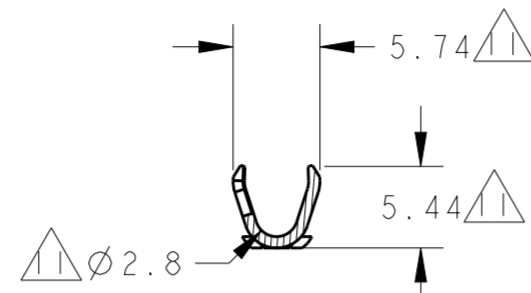
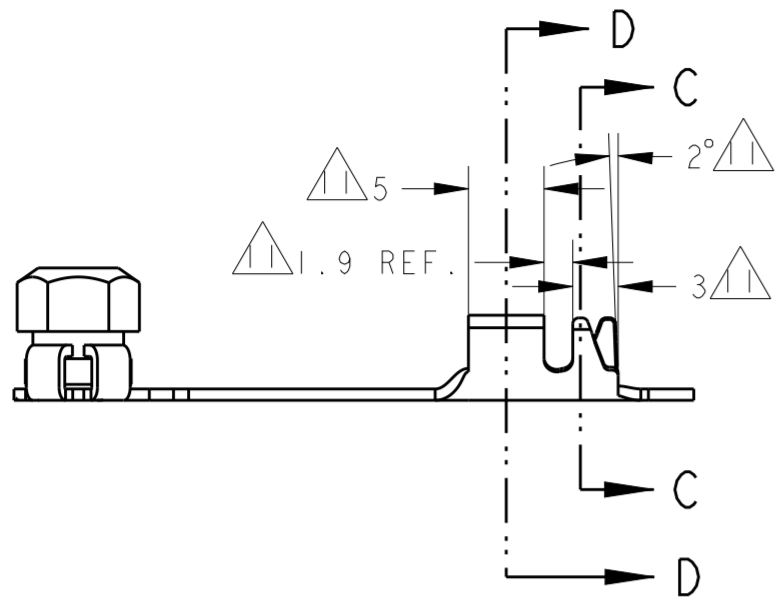
MATERIAL: material_2
 FINISH: finish_spec_2

STE TE Connectivity
 ASSY., TERMINAL_RING_TONGUE, M4

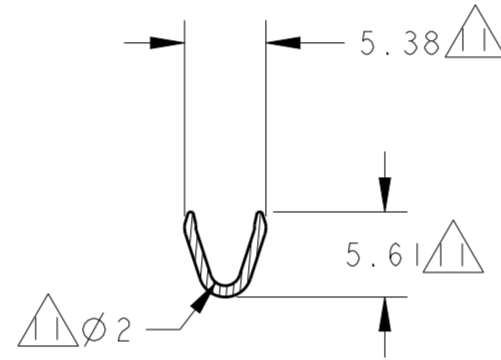
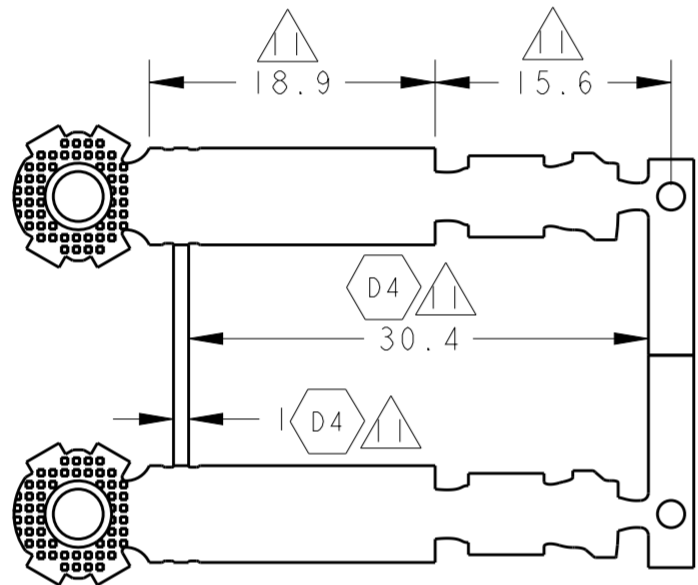
SIZE: A2
 CAGE CODE: 00779
 DRAWING NO: C-2050216
 SCALE: 2:1
 SHEET: 1 OF 2
 REV: D4

THIS DRAWING IS UNPUBLISHED. RELEASED FOR PUBLICATION
 © COPYRIGHT - BY - ALL RIGHTS RESERVED.

REVISIONS				
P	LTR	DESCRIPTION	DATE	APVD
		SEE SHEET 1		

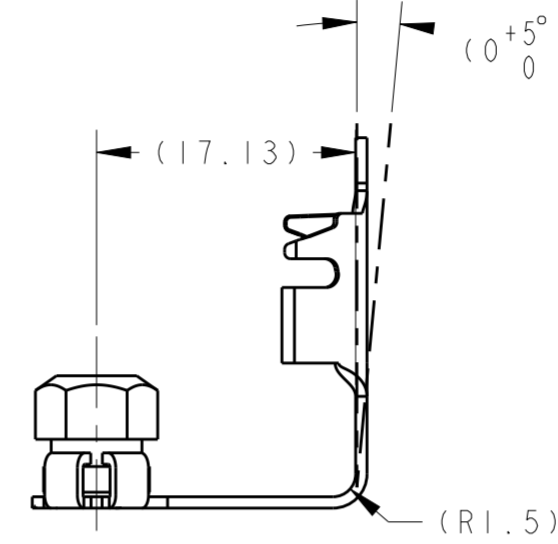


SECTION C-C

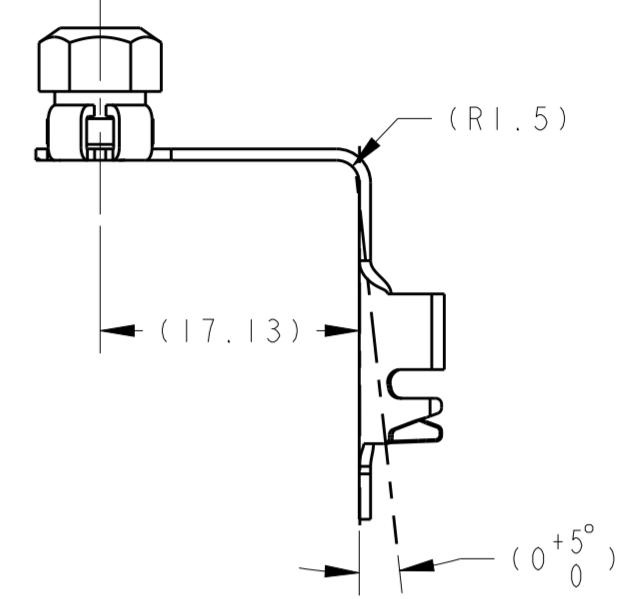


SECTION D-D

RECOMMENDED APPLICATION FOR 2050216-6



TYPE 1



TYPE 2

THIS DRAWING IS A CONTROLLED DOCUMENT.		DWN S. ZHU 02NOV09	STE TE Connectivity	
DIMENSIONS: mm		CHK W. YUAN 13NOV09		
TOLERANCES UNLESS OTHERWISE SPECIFIED: ± 0.3		APVD K. ODA 13NOV09	NAME ASSY., TERMINAL_RING_TONGUE, M4	
0-PLC ± 0.1		PRODUCT SPEC	SIZE CAGE CODE DRAWING NO. RESTRICTED TO	
1-PLC ± 0.1		APPLICATION SPEC	A200779 C-2050216	
2-PLC ± 0.01		FINISH	SCALE 2:1 SHEET 2 OF 2 REV D4	
3-PLC ± 0.001		WEIGHT	CUSTOMER DRAWING	
4-PLC ± 0.0001				
ANGLES $\pm 3^\circ$				
FINISH				