

4

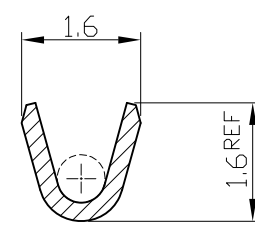
3

2

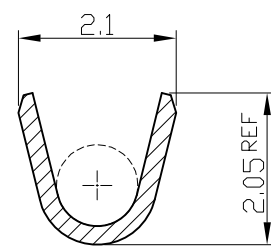
1

THIS DRAWING IS UNPUBLISHED. RELEASED FOR PUBLICATION  
 © COPYRIGHT BY TYCO ELECTRONICS CORPORATION. ALL RIGHTS RESERVED.

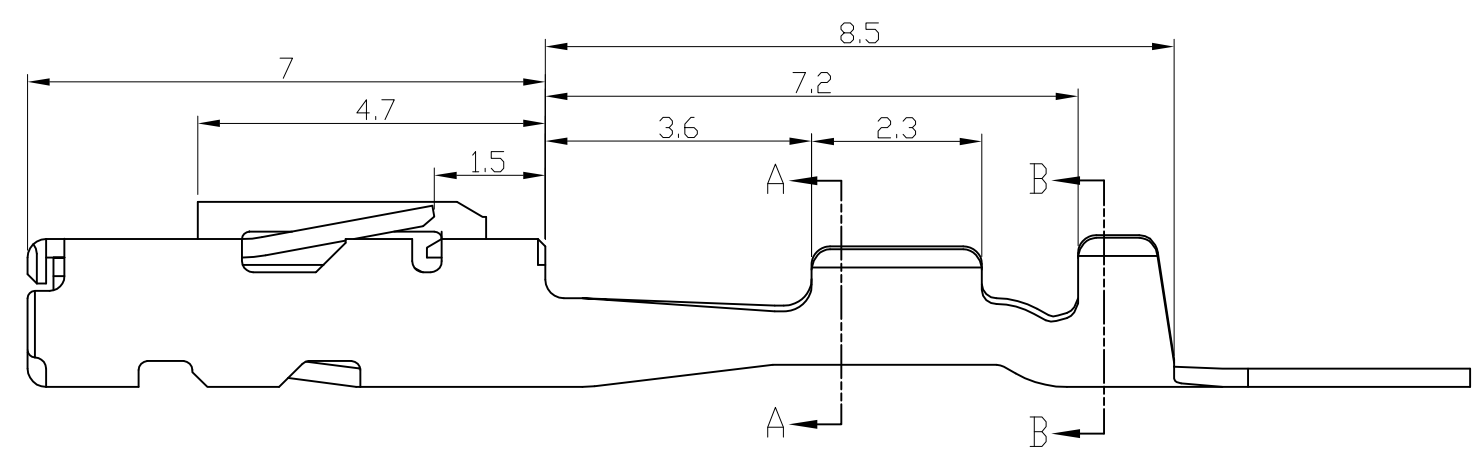
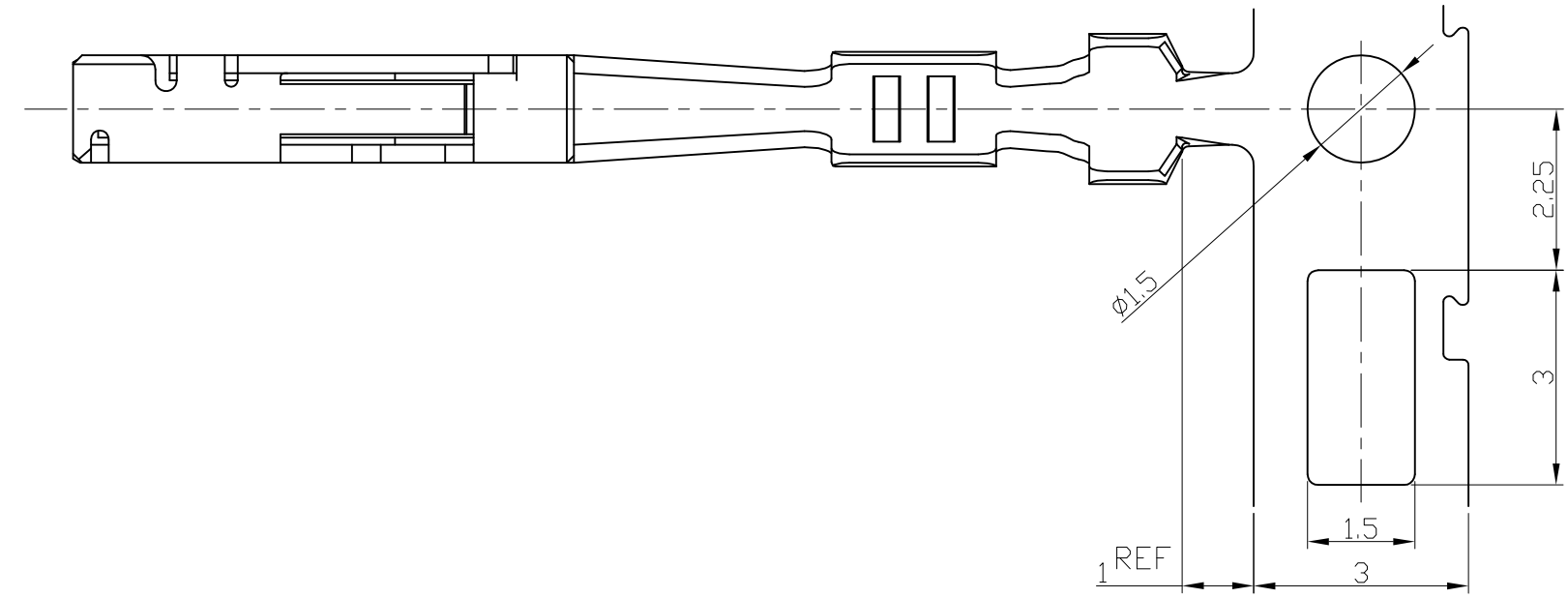
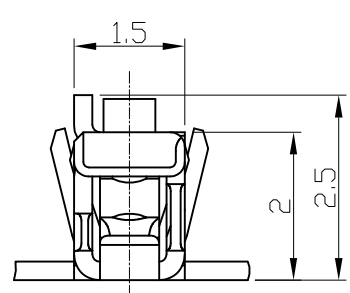
LOC	DIST	REVISIONS					
		P	LTR	DESCRIPTION	DATE	DWN	APVD
DS	-		A	RELEASED	22.JUN.'09	KT	HG
			A1	REVISED (ECR-09-018695)	25.SEP.'09	KT	HG



SECTION A-A



SECTION B-B



NOTE

- 1. GENERAL TOLERANCE:  $\pm 0.3$ ,  $\pm 3^\circ$
- 2. APPLICABLE WIRE RANGE;

Conductor		Insulation Diameter	
Nominal Size	Calculated Cross-Section Area (mm <sup>2</sup> )	Minimum (mm)	Maximum (mm)
0.13	0.14	0.9	0.95
0.22	0.24	1.0	1.05

- 3. APPLICATOR FEED: 7.5mm

PRE-TIN	COPPER ALLOY	2005097-1
FINISH	MATERIAL	PART NUMBER

<small>THIS DRAWING IS A CONTROLLED DOCUMENT FOR TYCO ELECTRONICS CORPORATION. IT IS SUBJECT TO CHANGE AND THE CONTROLLING ENGINEERING ORGANIZATION SHOULD BE CONTACTED FOR THE LATEST REVISION.</small>		DWN <b>KT JUNG</b> CHK <b>JW JUNG</b> APVD <b>HG CHO</b> PRODUCT SPEC		<b>Tyco Electronics</b> AMP KOREA. Kyungsan, Korea	
DIMENSIONS: MM		TOLERANCES UNLESS OTHERWISE SPECIFIED:		NAME 025 TH RECEPTACLE CONTACT (SS)	
		APPLICATION SPEC		SIZE <b>A3</b>	
MATERIAL SEE TABLE		FINISH SEE TABLE		CAGE CODE <b>00779</b>	
CUSTOMER DRAWING		DRAWING NO <b>2005097</b>		RESTRICTED TO -	
		WEIGHT		SCALE <b>10/1</b>	
		SHEET <b>1</b> OF <b>1</b>		REV <b>A1</b>	