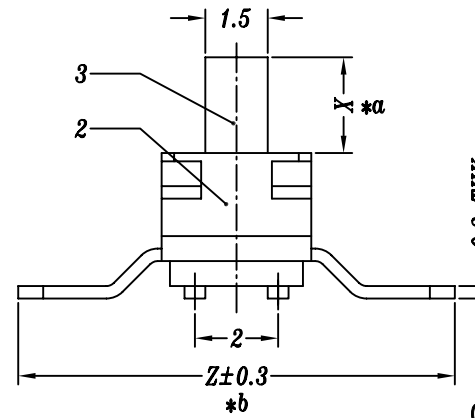
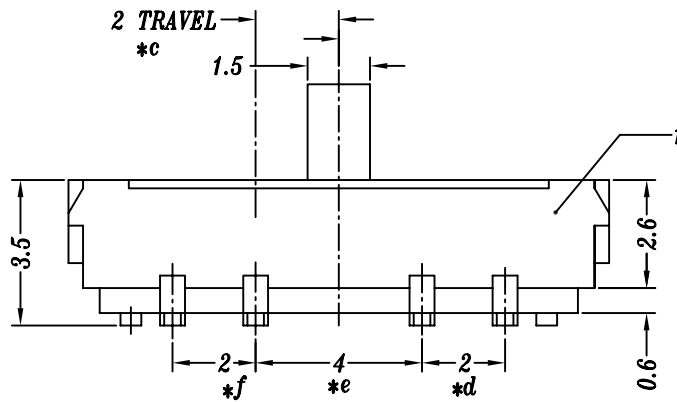
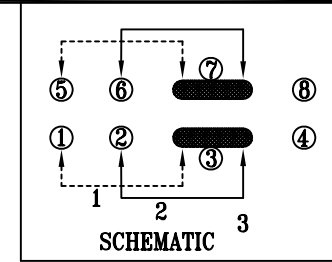


P.C.B LAYOUT



SPECIFICATION

1. Rating: DC 12V 0.3A
2. Travel: 2 mm
3. Function: 2P2T
4. Contact Resistance: <math>\leq 70\text{m}\Omega\text{MAX}</math>
5. Operating Force:  $200\pm 80\text{gf}$
6. Life test: 10,000 cycles

Knob X=2.0, 3.0, 4.0mm

Terminal Z=7.5, 10.5mm

G2: 胶柄长2mm  
B: 胶柄黑色

					TOLERANCE UNLESS SPECIFIED									
					UP TO 5mm: ±0.1	ANGULAR	1							
					ABOVE 5mm: ±0.2	±1°	NO	DATE	REVISIONS		BY	APPD		
4	MK-22D10 CONTACT/SPRING	Be-Cu/PBS	2	Ag CLAD/NATURAL	TITLE:MINI SLIDE SWITCH			UNIT : MM	ROHS COMPLIANT	DWN				
3	MS-23D18 KNOB	PA66	1	BLACK	MODEL:MS-22D20G2-B 弹线			SCALE: 5:1	CHK'D					
2	COVER	0.2mm SUS	1	WASHING	<b>HAOYU(HONGKONG)LIMITED</b> 皓宇(香港)有限公司							APPD		
1	MS-23D20 CASE(MS-23D18)	PA6T/9# BRASS STRIP	1	BLACK/Ag PLATED								PRO.AGL:	REV : A	
NO.	PART NAME	MATERIAL	QTY	FINISHING										