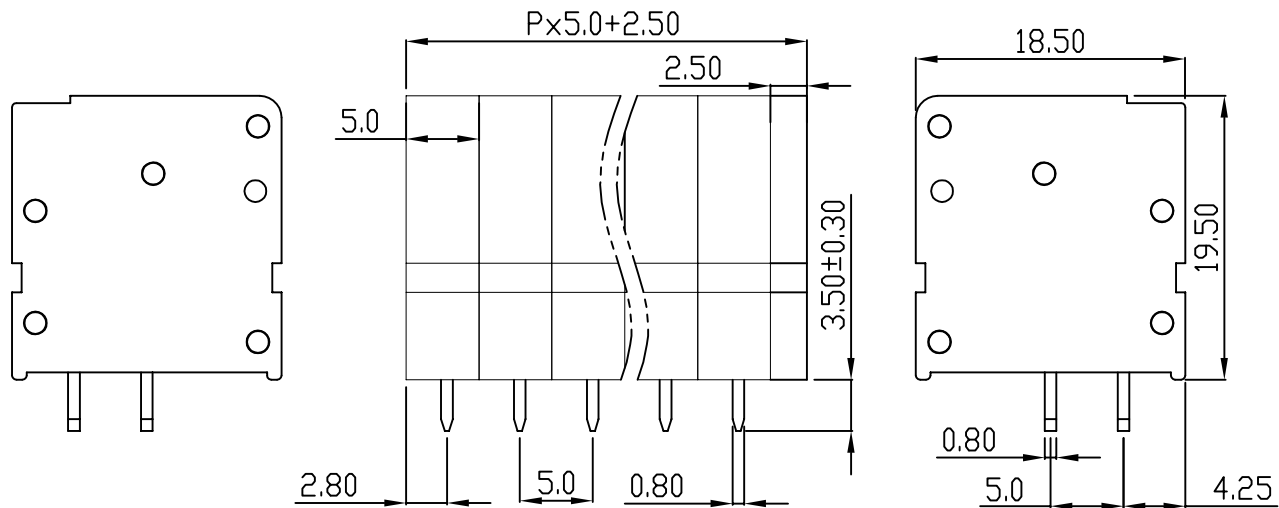
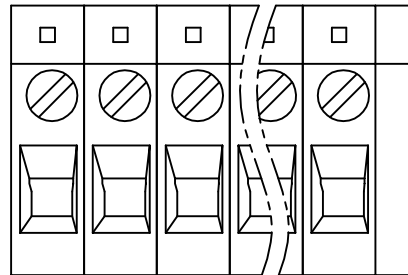
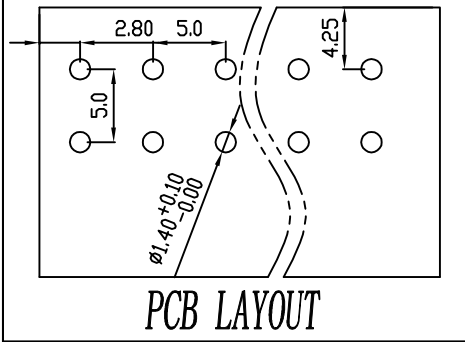


linear dimension(Tolerances Standard GB/T 14486-2008)								—		
variable range	to 6	over 6 to 10	over 10 to 30	over 30 to 60	over 60 to 100	over 100 to 160	over 160 to	to 10	over 10 to 100	over 100 to
tolerance	±0.20	±0.30	±0.50	±0.70	±1.00	±1.30	±1.60	0.10	0.30	0.60



REVISION RECORD				
REV.	DESCRIPTION	ECN No.	APPROVED	DATE
A	新发行		CLF	21.03.16

UL/CUL 技术参数 UL/CUL Technical Data			
等级 Use Group		B	C D
额定电压 Rated Voltage [V]		300	- 600
额定电流 Rated Current [A]		20	- 5
接线范围 Wire Range		24-12	
单/多芯线 Solid/Stranded [AWG]			
耐电压 Withstanding Voltage		1600V/1Min	
IEC 技术参数 IEC Technical Data			
过电压类别 Overvoltage Category		III	III II
污染等级 Contamination Class		3	2 2
额定电压 Rated Voltage [V]		250	400 630
额定电流 Rated Current [A]		24	24 24
额定冲击电压 Impulse withstand voltage ^a [KV]		4.0	4.0 4.0
导线截面积 Conductor cross section		2.5	
硬质/柔性导线 Solid/flexible [mm ²]			
材料 Material			
绝缘材料 Insulation Material		PA66	
阻燃等级 Imflammability		UL94V-0	
导体材料 Contactor Material		铜合金 Copper alloy	
导体表面镀层 Contactive Coating		镀锡 Tin Plated	
一般参数 Other Data			
间距 Pitch [mm]		5.0	
极数 Poles [P]		2-24	
剥线长度 Stripping Length [mm]		9-10	
螺丝 Screw/扭矩 Torque(Max) [N.m]		M4.0/1.2	
工作温度 Operating temperatur [°C]		-40~+105	
引针尺寸 Pin Dimensions [mm]		3.5	
PCB板孔径 PCB Hole Diameter [mm]		1.4	

DES.	LQQ	DATE	21.03.16	单位 / UNITS	mm	尺寸 / SIZE	A4	比例 / SCALE	1:1	第三视角 / THIRD ANGLE PROJECTION	版本 / REV	A
CHK.	SY	DATE	21.03.16	慈溪市科发电子有限公司 CIXI KEFA ELECTRONIC CO., LTD				名称 / TITLE	 KF105V-5.0			
APP.	CLF	DATE	21.03.16									