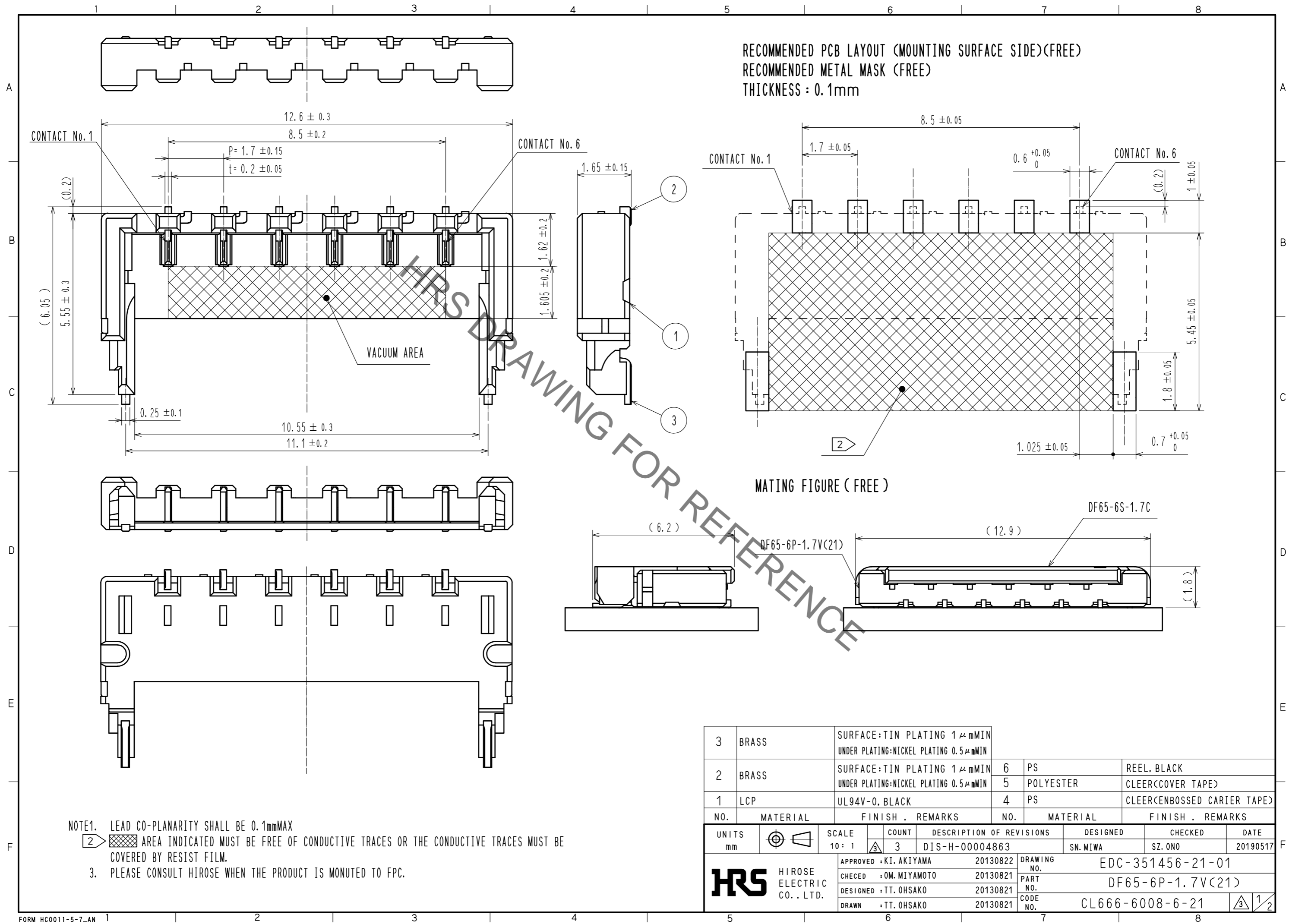


May.1.2022 Copyright 2022 HIROSE ELECTRIC CO., LTD. All Rights Reserved.  
 In case of consideration for using Automotive equipment / device which demand high reliability, kindly contact our sales window correspondents.



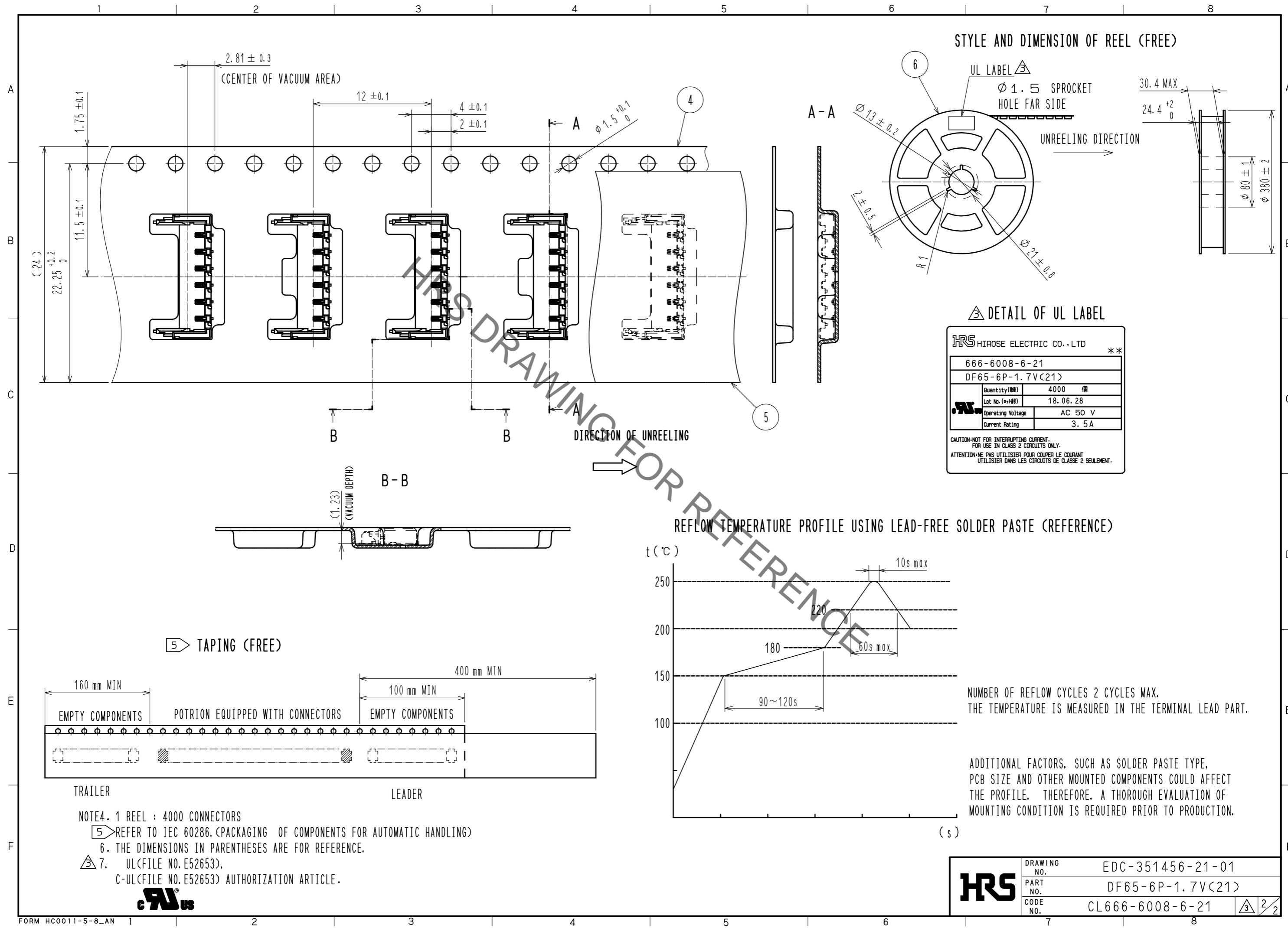
RECOMMENDED PCB LAYOUT (MOUNTING SURFACE SIDE)(FREE)  
 RECOMMENDED METAL MASK (FREE)  
 THICKNESS : 0.1mm

MATING FIGURE (FREE)

NOTE1. LEAD CO-PLANARITY SHALL BE 0.1mmMAX  
 2. AREA INDICATED MUST BE FREE OF CONDUCTIVE TRACES OR THE CONDUCTIVE TRACES MUST BE COVERED BY RESIST FILM.  
 3. PLEASE CONSULT HIROSE WHEN THE PRODUCT IS MONUTED TO FPC.

3	BRASS	SURFACE:TIN PLATING 1 μmMIN UNDER PLATING:NICKEL PLATING 0.5 μmMIN			
2	BRASS	SURFACE:TIN PLATING 1 μmMIN UNDER PLATING:NICKEL PLATING 0.5 μmMIN	6	PS	REEL. BLACK
1	LCP	UL94V-0. BLACK	5	POLYESTER	CLEER(COVER TAPE)
			4	PS	CLEER(CENBOSSED CARRIER TAPE)
NO.	MATERIAL	FINISH . REMARKS	NO.	MATERIAL	FINISH . REMARKS
UNITS	mm	SCALE	10 : 1	COUNT	3
		DESCRIPTION OF REVISIONS	DESIGNED	CHECKED	DATE
		DIS-H-00004863	SN.MIWA	SZ.ONO	20190517
APPROVED : KI. AKIYAMA		20130822	DRAWING NO. EDC-351456-21-01		
CHECED : OM. MIYAMOTO		20130821	PART NO. DF65-6P-1.7V(21)		
DESIGNED : TT. OHSAKO		20130821	CODE NO. CL666-6008-6-21		
DRAWN : TT. OHSAKO		20130821	1/2		

May.1.2022 Copyright 2022 HIROSE ELECTRIC CO., LTD. All Rights Reserved.  
 In case of consideration for using Automotive equipment / device which demand high reliability, kindly contact our sales window correspondents.



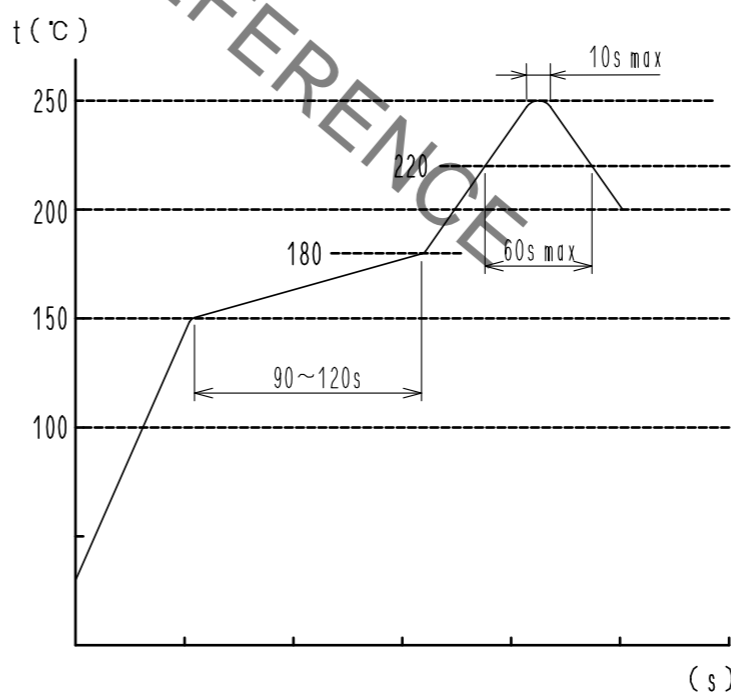
STYLE AND DIMENSION OF REEL (FREE)

DETAIL OF UL LABEL

HRS HIROSE ELECTRIC CO., LTD		**
666-6008-6-21		
DF65-6P-1.7V(21)		
Quantity(個)	4000	個
Lot No.(年月日)	18.06.28	
Operating Voltage	AC 50 V	
Current Rating	3.5 A	

CAUTION-NOT FOR INTERRUPTING CURRENT.  
 FOR USE IN CLASS 2 CIRCUITS ONLY.  
 ATTENTION-NE PAS UTILISER POUR COUPER LE COURANT  
 UTILISER DANS LES CIRCUITS DE CLASSE 2 SEULEMENT.

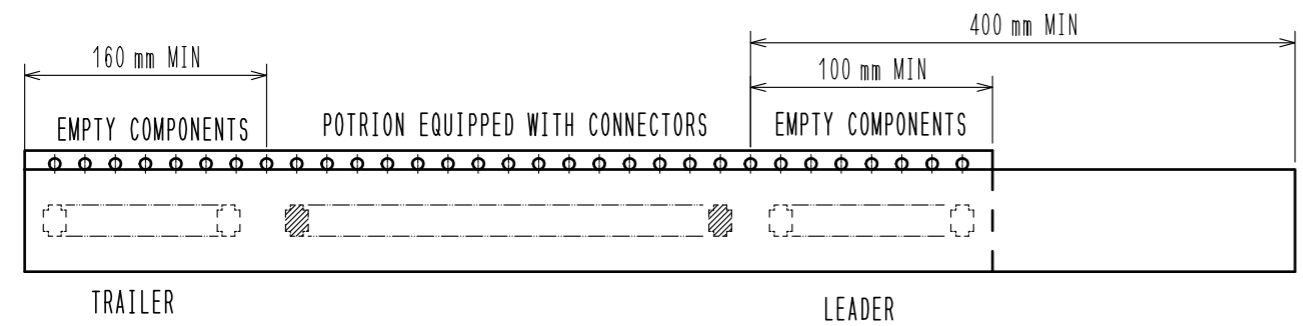
REFLOW TEMPERATURE PROFILE USING LEAD-FREE SOLDER PASTE (REFERENCE)



NUMBER OF REFLOW CYCLES 2 CYCLES MAX.  
 THE TEMPERATURE IS MEASURED IN THE TERMINAL LEAD PART.

ADDITIONAL FACTORS, SUCH AS SOLDER PASTE TYPE,  
 PCB SIZE AND OTHER MOUNTED COMPONENTS COULD AFFECT  
 THE PROFILE. THEREFORE, A THOROUGH EVALUATION OF  
 MOUNTING CONDITION IS REQUIRED PRIOR TO PRODUCTION.

TAPING (FREE)



- NOTE4. 1 REEL : 4000 CONNECTORS  
 5 REFER TO IEC 60286. (PACKAGING OF COMPONENTS FOR AUTOMATIC HANDLING)  
 6. THE DIMENSIONS IN PARENTHESES ARE FOR REFERENCE.  
 7. UL(FILE NO. E52653).  
 C-UL(FILE NO. E52653) AUTHORIZATION ARTICLE.



HRS	DRAWING NO.	EDC-351456-21-01
	PART NO.	DF65-6P-1.7V(21)
	CODE NO.	CL666-6008-6-21
		3/2