

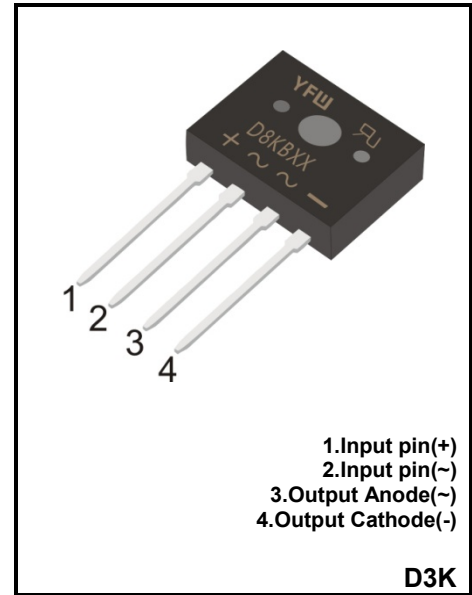
**8.0A GLASS PASSIVATED BRIDGE RECTIFIER**

**Reverse Voltage - 100 to 1000 V**

**Forward Current – 8.0A**

**FEATURES**

- ◆ High current capability
- ◆ Low forward voltage drop
- ◆ Glass Passivated Chip Junction
- ◆ Low power loss, high efficiency
- ◆ Lead free in comply with EU RoHS 2011/65/EU directives



**MECHANICAL DATA**

- ◆ Case: D3K
- ◆ Terminals: Solderable per MIL-STD-202E, Method 208C
- ◆ Case:UL-94 Class V-0 recognized Flame Retardant Epoxy

**Maximum Ratings and Electrical characteristics**

Ratings at 25 °C ambient temperature unless otherwise specified.

Parameter	Symbols	D8KB10	D8KB20	D8KB40	D8KB60	D8KB80	D8KB100	Units
Maximum Repetitive Peak Reverse Voltage	$V_{RRM}$	100	200	400	600	800	1000	V
Maximum RMS voltage	$V_{RMS}$	70	140	280	420	560	700	V
Maximum DC Blocking Voltage	$V_{DC}$	100	200	400	600	800	1000	V
Average Rectified Output Current	$I_{(AV)}$	8						A
Peak Forward Surge Current 8.3 ms Single Half Sine-Wave Superimposed on Rated Load (JEDEC method)	$I_{FSM}$	170						A
Forward Voltage per element @ $I_F=6.0A$ DC	$V_F$	1.1						V
Maximum DC Reverse Current at Rated DC Blocking Voltage @ $T_a=25^{\circ}C$ @ $T_a=125^{\circ}C$	$I_R$	5.0 500						$\mu A$
$I^2t$ Rating for Fusing(3ms $\leq t \leq$ 8.3ms)	$I^2t$	120						A <sup>2</sup> S
Typical junction capacitance (Note 1)	$C_J$	56						pF
Maximum Typical Thermal resistance	$R_{\theta JA}$	55						$^{\circ}C/W$
Operating and Storage Temperature Range	$T_j, T_{stg}$	-55 ~ +150						$^{\circ}C$

(1) Measured at 1 MHz and applied reverse voltage of 4 V D.C

**Ratings and Characteristic Curves**

FIG. 1- DERATING CURVE OUTPUT RECTIFIED CURRENT

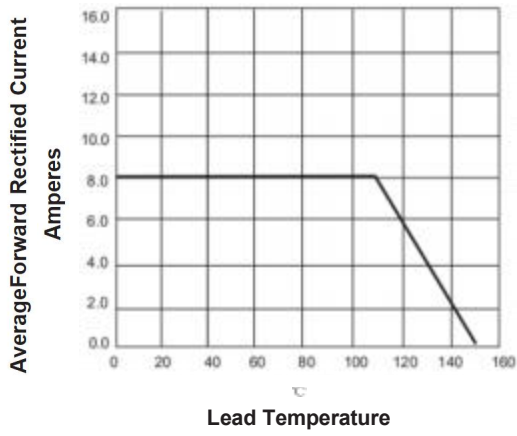


FIG. 2-MAXIMUM NON-REPETITIVE PEAK FORWARD SURGE CURRENT PER LEG

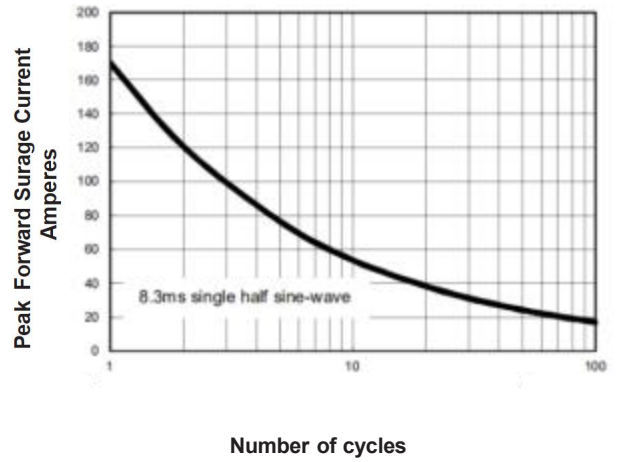


FIG. 3-TYPICAL FORWARD VOLTAGE CHARACTERISTICS

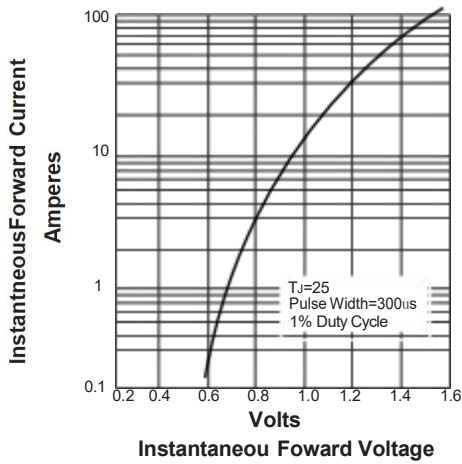
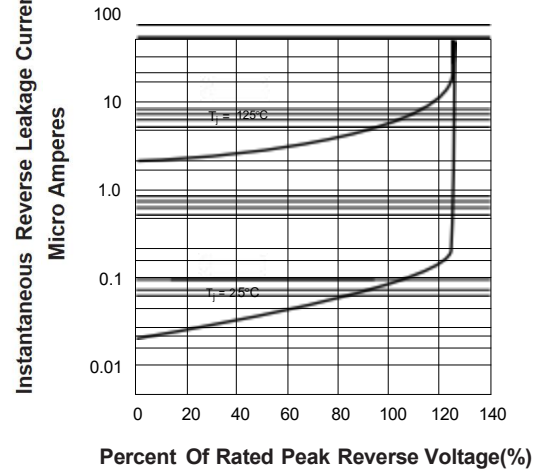
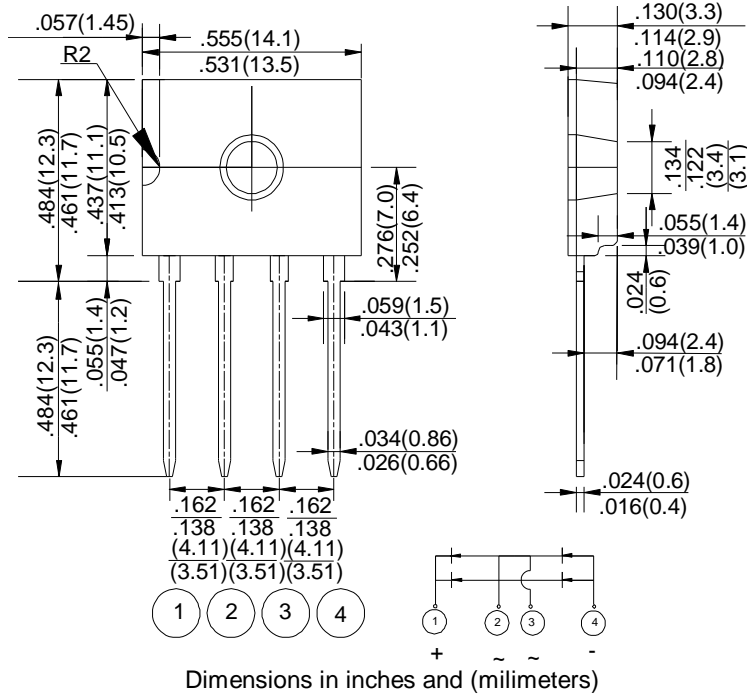


FIG. 4-TYPICAL REVERSE LEAKAGE CHARACTERISTICS



**Package Outline**

**D3K**



**Summary of Packing Options**

Package	Packing Description	Packing Quantity	Industry Standard
D3K	BOX	500	EIA-481-1