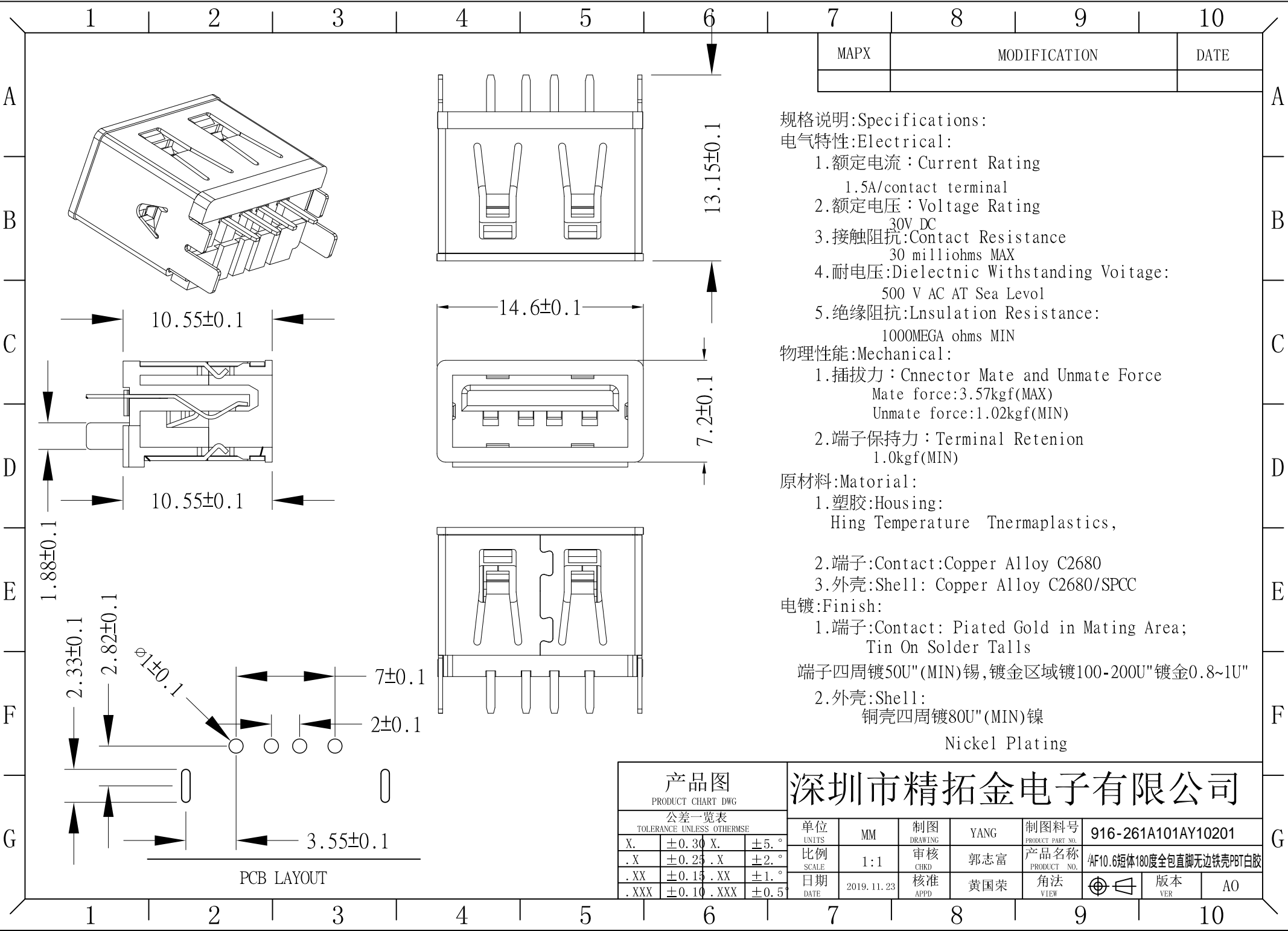


MAPX	MODIFICATION	DATE



规格说明:Specifications:

电气特性:Electrical:

- 1.额定电流:Current Rating
1.5A/contact terminal
- 2.额定电压:Voltage Rating
30V DC
- 3.接触阻抗>Contact Resistance
30 milliohms MAX
- 4.耐电压:Dielectnic Withstanding Voitage:
500 V AC AT Sea Level
- 5.绝缘阻抗:Insulation Resistance:
1000MEGA ohms MIN

物理性能:Mechanical:

- 1.插拔力:Connector Mate and Unmate Force
Mate force:3.57kgf(MAX)
Unmate force:1.02kgf(MIN)
- 2.端子保持力:Terminal Retenion
1.0kgf(MIN)

原材料:Material:

- 1.塑胶:Housing:
Hing Temperature Tnermaplastics,
- 2.端子>Contact:Copper Alloy C2680
- 3.外壳:Shell: Copper Alloy C2680/SPCC

电镀:Finish:

- 1.端子>Contact: Plated Gold in Mating Area;
Tin On Solder Talls
端子四周镀50U"(MIN)锡,镀金区域镀100-200U"镀金0.8~1U"
- 2.外壳:Shell:
铜壳四周镀80U"(MIN)镍
Nickel Plating

产品图 PRODUCT CHART DWG		深圳市精拓金电子有限公司							
公差一览表 TOLERANCE UNLESS OTHERWISE		单位 UNITS	MM	制图 DRAWING	YANG	制图料号 PRODUCT PART NO.	916-261A101AY10201		
X.	±0.30	X.	±5.°	比例 SCALE	1:1	审核 CHKD	郭志富	产品名称 PRODUCT NO.	AF10.6短体180度全包直脚无边铁壳PBT白胶
.X	±0.25	.X	±2.°	日期 DATE	2019.11.23	核准 APPD	黄国荣	角法 VIEW	⊕ ⊖
.XX	±0.15	.XX	±1.°	版本 VER					AO
.XXX	±0.10	.XXX	±0.5°						

PCB LAYOUT