

**FEATURES**

- Very Small Plastic Package
- High Switching Speed

**APPLICATIONS**

- High-Speed Switching in e.g. Surface Mounted Circuits

**MARKING: A6**



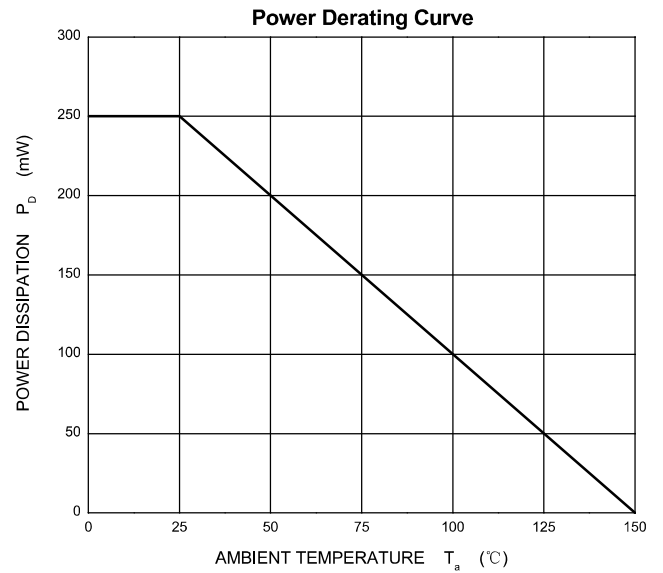
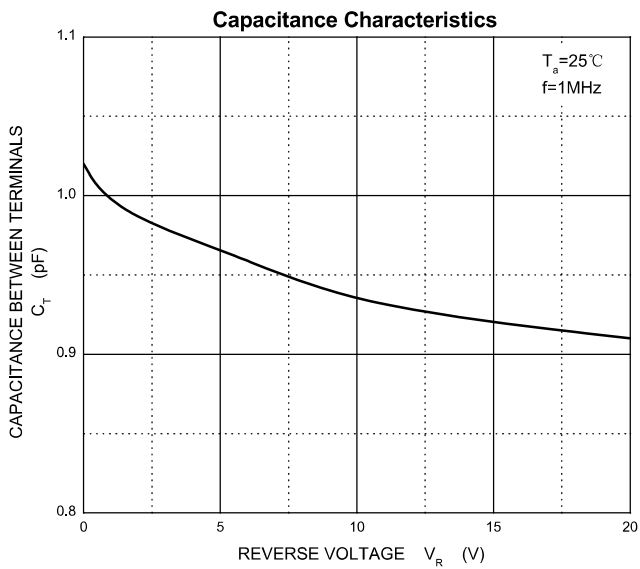
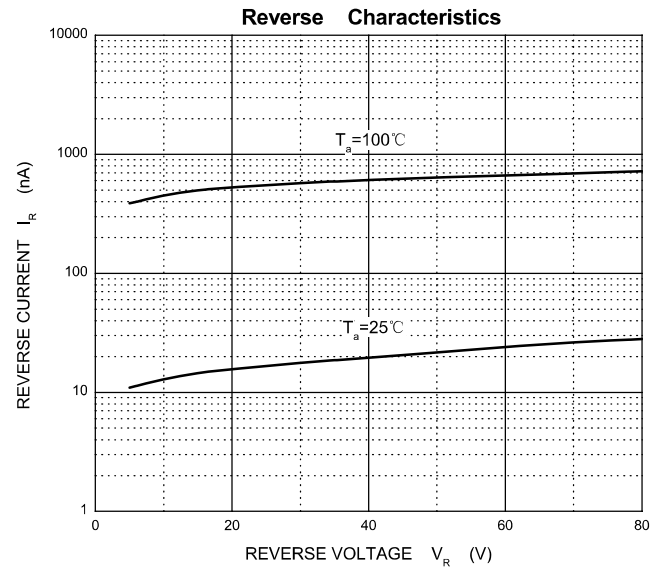
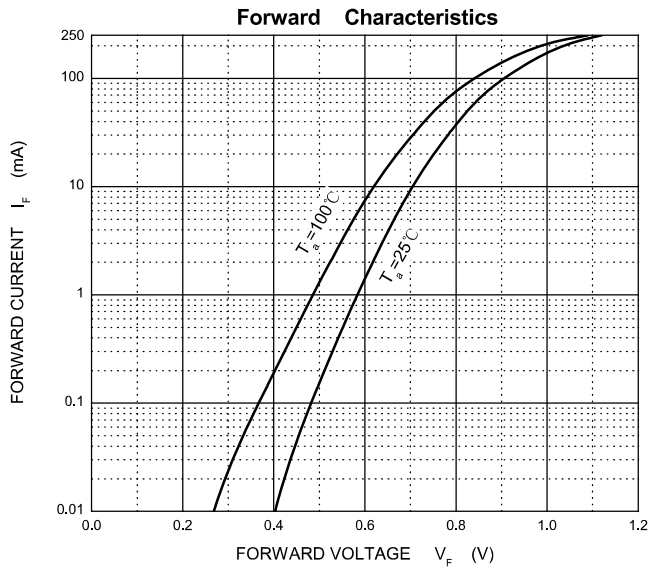
**MAXIMUM RATINGS ( T<sub>a</sub>=25°C unless otherwise noted )**

Symbol	Parameter	Value	Unit
<b>V<sub>RRM</sub></b>	Peak Repetitive Reverse Voltage	100	V
<b>V<sub>R</sub></b>	DC Blocking Voltage	100	
<b>I<sub>o</sub></b>	Continuous Forward Current	250	mA
<b>I<sub>FSM</sub></b>	Non-repetitive Peak Forward Surge Current@t= 8.3 ms	2.0	A
<b>P<sub>D</sub></b>	Power Dissipation	250	mW
<b>R<sub>θJA</sub></b>	Thermal Resistance from Junction to Ambient	500	°C/W
<b>T<sub>J</sub>, T<sub>stg</sub></b>	Operation Junction and Storage Temperature Range	-55~+150	°C

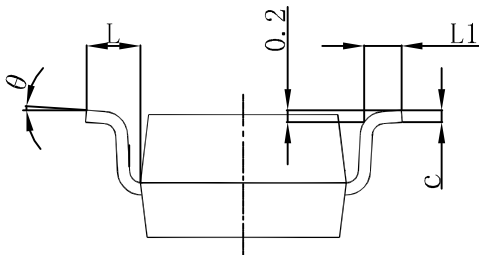
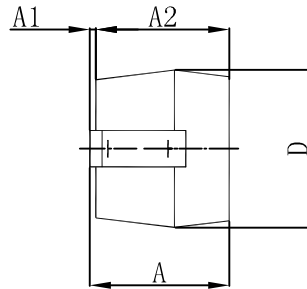
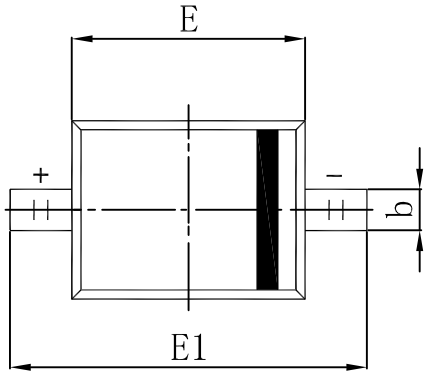
**ELECTRICAL CHARACTERISTICS(T<sub>a</sub>=25°C unless otherwise specified)**

Parameter	Symbol	Test conditions	Min	Typ	Max	Unit
<b>Reverse voltage</b>	V <sub>(BR)</sub>	I <sub>R</sub> =100μA	100			V
<b>Reverse current</b>	I <sub>R</sub>	V <sub>R</sub> =25V			30	nA
		V <sub>R</sub> =75V			1	μA
<b>Forward voltage</b>	V <sub>F</sub>	I <sub>F</sub> =1mA			0.715	V
		I <sub>F</sub> =10mA			0.855	
		I <sub>F</sub> =50mA			1	
		I <sub>F</sub> =150mA			1.25	
<b>Total capacitance</b>	C <sub>tot</sub>	V <sub>R</sub> =0V, f=1MHz			1.5	pF
<b>Reverse recovery time</b>	t <sub>rr</sub>	I <sub>F</sub> = I <sub>R</sub> =10mA, I <sub>r</sub> =0.1×I <sub>R</sub>			4	ns

**Typical Characteristics**



**SOD-323 Package Outline Dimensions**



Symbol	Dimensions In Millimeters		Dimensions In Inches	
	Min	Max	Min	Max
A		1.100		0.043
A1	0.000	0.100	0.000	0.004
A2	0.800	1.000	0.031	0.039
b	0.250	0.350	0.010	0.014
c	0.080	0.150	0.003	0.006
D	1.200	1.400	0.047	0.055
E	1.600	1.800	0.063	0.071
E1	2.500	2.750	0.098	0.108
L	0.475 REF		0.019 REF	
L1	0.250	0.400	0.010	0.016
θ	0°	8°	0°	8°