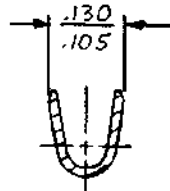
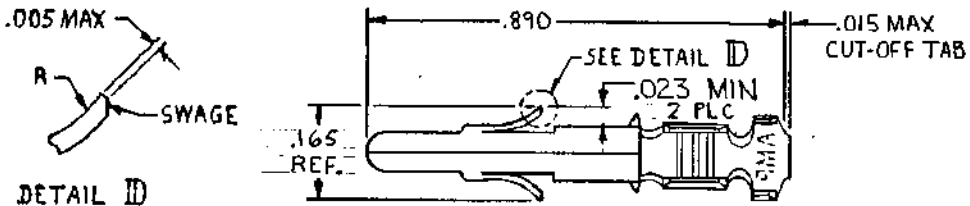
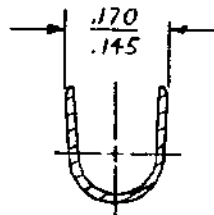
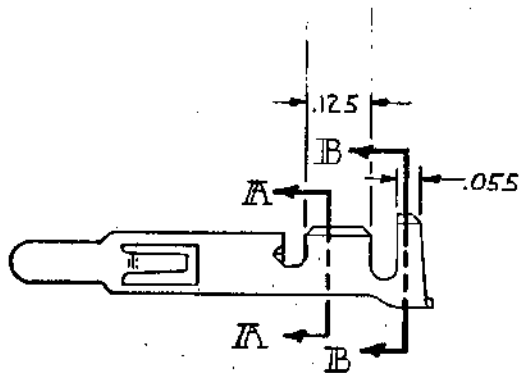
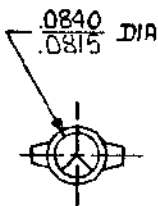


© COPYRIGHT 1975 BY AMP INCORPORATED, HARRISBURG, PA.
 ALL INTERNATIONAL RIGHTS RESERVED, AMP INCORPORATED PRODUCTS
 COVERED BY U. S. AND FOREIGN PATENTS AND/OR PATENTS PENDING.

REVISIONS					
REV	ZONE	LTR	DESCRIPTION	DATE	APPROVED
1		G	REVISED PER ECR-12-013323	10AUG12	TM



SECTION A-A



SECTION B-B

⚠ INSULATION RANGE: .060-.130 DIA.

PRE-TIN	.012 BRASS	350669-1
FINISH	MATERIAL	PART NO

UNLESS OTHERWISE SPECIFIED DIMENSIONS ARE IN INCHES. TOLERANCES ON: DECIMALS ± .015 ANGLES ±	CONTRACT NO	AMP INCORPORATED Harrisburg, Pa.	
	DR <i>m FENER 5-6-81</i>	NAME PIN, (LOOSE PIECE) UNIVERSAL MATE-N-LOK	
WIRE RANGE 20-17 AWG	CHK <i>S.S. Heide 6/9/81</i>	SIZE B	CODE IDENT NO 00779
INSULATION RANGE ⚠	APPD <i>R. G. Gabel 6-10-81</i>	DESIGN APPD	DRAWING NO 350669
	OTHER APPD	SCALE 4-1	SHEET <i>1/1</i>