

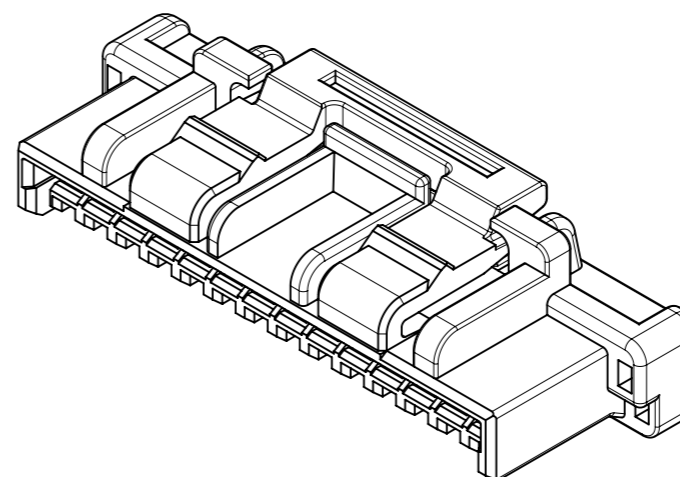
NOTES

- ① 偶数極に適用
APPLY FOR EVEN CKT
- ② 関連製品・書類はSHEET 3を参照ください
REFER TO SHEET 3 ABOUT RELATED PRODUCTS AND DOCUMENTS.
- ③ オーダー番号(製品番号): SHEET 4の製品一覧を参照のこと
ORDER No. (PRODUCT No.) : REFER TO SHEET 4 FOR PRODUCT LIST.

502578 ********

シリーズ番号 極数 色
SERIES NO CIRCUIT SIZE COLOR

| CIRCUIT | ハウジングカラー HOUSING COLOR NO. |
|---------|----------------------------------|
| 02~15 | 00:ナチュラル NATURAL |
| | 01:黒 BLACK |
| | 02:赤 RED |
| | 03:黄 YELLOW |
| | 04:青 BLUE |
| | 05:桃 PINK |
| | 06:緑 GREEN |
| | 07:茶 BROWN |
| | 08:橙 ORANGE |
| | 09:紫 VIOLET |
| 03~05 | 11:灰 GRAY |
| | 16:黄緑 YELLOWISH GREEN |
| 02~05 | 14:水 PALE BLUE |



| | | | |
|------|------|-------|----------------|
| 21 | 26.8 | ±0.25 | 15 |
| 19.5 | 25.3 | | 14 |
| 18 | 23.8 | | 13 |
| 16.5 | 22.3 | | 12 |
| 15 | 20.8 | | 11 |
| 13.5 | 19.3 | | 10 |
| 12 | 17.8 | | 9 |
| 10.5 | 16.3 | | 8 |
| 9 | 14.8 | | 7 |
| 7.5 | 13.3 | | 6 |
| 6 | 11.8 | ±0.20 | 5 |
| 4.5 | 10.3 | | 4 |
| 3 | 8.8 | | 3 |
| 1.5 | 7.3 | 2 | |
| B | A | | 極数 CKT SIZE |

④ トレードマーク : Mプラス 2文字の製造工場を示すアルファベットにて表示。
但し、"J"はJAPANを、"L"はMALAYSIAを示す。(例: MXJ, MXL)
金型番号 : アルファベット2文字にて表示。(例: 1A, 12A, 1B, 12B)

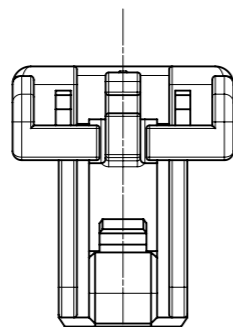
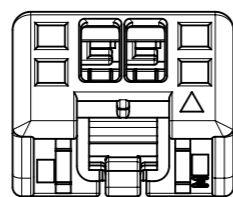
| 部品 PART | 材質 MATERIAL |
|------------------|--|
| ハウジング HOUSING | ポリエステル(PBT), UL94V-0, 色 : SEE CHART POLYESTER (PBT), UL94V-0, COLOR : SEE CHART |

| | | | | |
|-----------------|----|--------------|------------|----------|
| DOCUMENT STATUS | P1 | RELEASE DATE | 2019/11/20 | 09:03:13 |
|-----------------|----|--------------|------------|----------|

| DIMENSION UNITS | | SCALE | CURRENT REV DESC: | | molex | | |
|--|---------|------------------------|-------------------|------------|-------------------------------|----------|--------------|
| mm | NTS | | | | | | |
| GENERAL TOLERANCES (UNLESS SPECIFIED) | | | EC NO: 627408 | | CLIK-MATE 1.5 SINGLE PLUG HSG | | |
| ANGULAR TOL | ± 3.0 ° | | DRWN: AISHIKAWA | 2018/04/25 | | | |
| 4 PLACES | ± 0.2 | | CHK'D: SAKIYAMA | 2019/11/15 | | | |
| 3 PLACES | ± 0.2 | | APPR: KOMURAKAMI | 2019/11/20 | PRODUCT CUSTOMER DRAWING | | |
| 2 PLACES | ± 0.2 | | INITIAL REVISION: | | DOCUMENT NUMBER | | |
| 1 PLACE | ± 0.2 | | DRWN: AISHIKAWA | 2018/04/25 | 5025780000-SD | | DOC TYPE |
| 0 PLACES | ± 0.2 | | APPR: KOMURAKAMI | 2019/11/20 | PSD | 000 | REVISION |
| DRAFT WHERE APPLICABLE MUST REMAIN WITHIN DIMENSIONS | | THIRD ANGLE PROJECTION | DRAWING | SERIES | MATERIAL NUMBER | CUSTOMER | SHEET NUMBER |
| | | ⊕ | A3-SIZE | 502578 | SEE CHART | | 1 OF 4 |

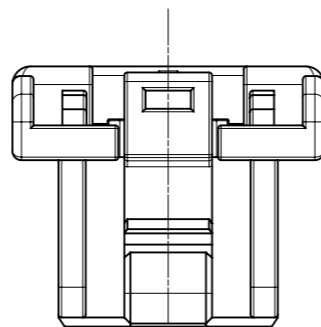
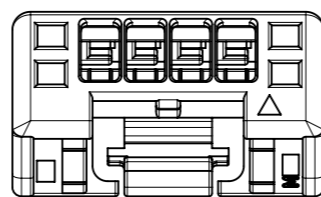
極数別ロック形状

LOCK SHAPE AT EACH CKT



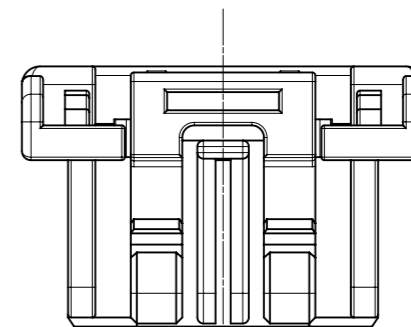
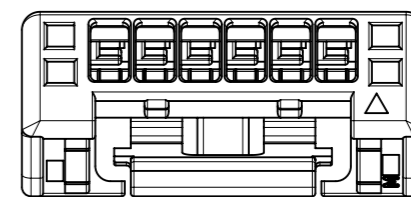
2,3極形状(1ロック)

FIGURE OF 2,3 CIRCUIT (1 LOCK)



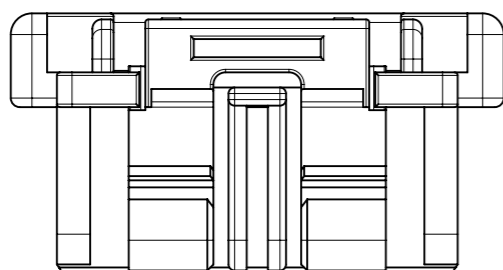
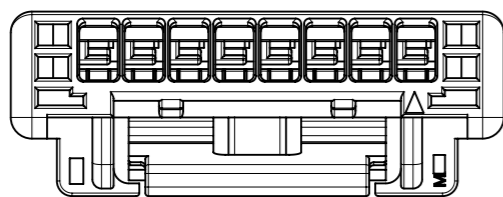
4,5極形状(1ロック)

FIGURE OF 4,5 CIRCUIT (1 LOCK)



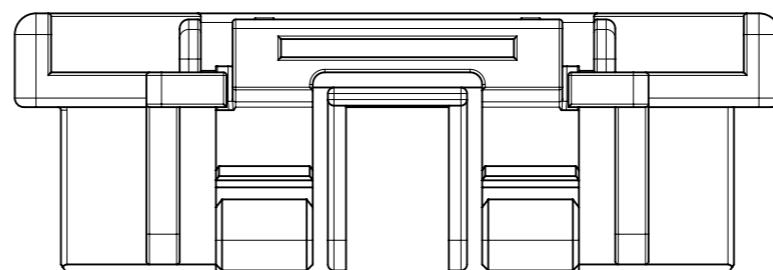
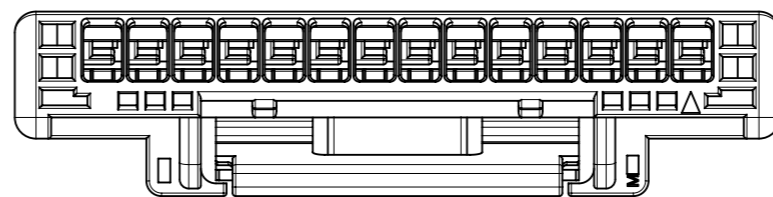
6極形状(2ロック)

FIGURE OF 6 CIRCUIT(2 LOCKS)



7-11極形状(2ロック)

FIGURE OF 7-11 CIRCUIT (2 LOCKS)



12-15極形状(2ロック)

FIGURE OF 12-15 CIRCUIT (2 LOCKS)

| | | | | | | | | | |
|---|--|------------------------|--|-------------------|--|------------|--|--------------------------|--|
| THIS DRAWING CONTAINS INFORMATION THAT IS PROPRIETARY TO MOLEX ELECTRONIC TECHNOLOGIES, LLC AND SHOULD NOT BE USED WITHOUT WRITTEN PERMISSION | | | | | | | | | |
| DIMENSION UNITS | | SCALE | | CURRENT REV DESC: | | | | molex | |
| mm | | NTS | | | | | | | |
| GENERAL TOLERANCES (UNLESS SPECIFIED) | | | | | | | | | |
| ANGULAR TOL | | ± 3.0 ° | | EC NO: 627408 | | | | | |
| 4 PLACES | | ± 0.2 | | DRWN: AISHIKAWA | | 2018/04/25 | | CLIK-MATE 1.5 | |
| 3 PLACES | | ± 0.2 | | CHK'D: SAKIYAMA | | 2019/11/15 | | SINGLE PLUG HSG | |
| 2 PLACES | | ± 0.2 | | APPR: KOMURAKAMI | | 2019/11/20 | | PRODUCT CUSTOMER DRAWING | |
| 1 PLACE | | ± 0.2 | | INITIAL REVISION: | | | | DOCUMENT NUMBER | |
| 0 PLACES | | ± 0.2 | | DRWN: AISHIKAWA | | 2018/04/25 | | 5025780000-SD | |
| | | | | APPR: KOMURAKAMI | | 2019/11/20 | | DOC TYPE | |
| DRAFT WHERE APPLICABLE | | THIRD ANGLE PROJECTION | | DRAWING | | SERIES | | DOC PART | |
| MUST REMAIN | | ⊕ | | A3-SIZE | | 502578 | | REVISION | |
| WITHIN DIMENSIONS | | | | | | | | A | |
| | | | | | | | | SHEET NUMBER | |
| | | | | | | | | 2 OF 4 | |

△ 適用製品及び各種仕様書
 APPLICABLE PRODUCTS AND VARIOUS SPECIFICATIONS

| | | |
|----------------------------------|-------------|-----------------|
| 梱包仕様書 PACKAGING SPECIFICATION | PART NUMBER | DOCUMENT NUMBER |
| | 502578 **** | SPK-502578-001 |

| | | | |
|-----------------------------|--------------|-------------|----------------|
| 適用端子 APPLICABLE TERMINAL | PLATING TYPE | PART NUMBER | WIRE SIZE(AWG) |
| | TIN | 502579 0000 | #24 - #28 |
| | | 503429 0000 | #26 - #30 |
| | GOLD | 213028 **00 | #24 - #26 |
| 213029 **00 | | #26 - #28 | |

| | | | | | | |
|---|---------------------------------------|-------------|---------------|-------------|---------------|-------------|
| 適合レセプタクルコネクタ APPLICABLE REC. CONNECTOR | SMT | | | | THROUGH HOLE | |
| | TIN PLATING | | GOLD PLATING | | TIN PLATING | |
| | VERTICAL | RIGHT ANGLE | VERTICAL | RIGHT ANGLE | VERTICAL | RIGHT ANGLE |
| シリーズ番号 SERIES No. | 502584 | 502585 | 213225 | 213226 | 503159 | 503175 |
| 製品仕様書 PRODUCT SPECIFICATION | 5025780000-PS | | 5025780004-PS | | 5025780002-PS | |
| アプリケーション仕様書 APPLICATION SPECIFICATION | AS-502578-001(JAPANESE)/-002(ENGLISH) | | | | | |

| | |
|---|---------------|
| 適合レセプタクルコネクタ APPLICABLE REC. CONNECTOR | BOTTOM ENTRY |
| | TIN PLATING |
| | VERTICAL |
| シリーズ番号 SERIES No. | 503395 |
| 製品仕様書 PRODUCT SPECIFICATION | 5025780003-PS |
| アプリケーション仕様書 APPLICATION SPECIFICATION | AS-503395-001 |

| | | | | | | | | | |
|---|-------|-----------------------------|---------|--------|-----------------|---|--|--------------|--|
| THIS DRAWING CONTAINS INFORMATION THAT IS PROPRIETARY TO MOLEX ELECTRONIC TECHNOLOGIES, LLC AND SHOULD NOT BE USED WITHOUT WRITTEN PERMISSION | | | | | | | | | |
| DIMENSION UNITS | SCALE | CURRENT REV DESC: | | | | molex | | | |
| mm | NTS | | | | | | | | |
| GENERAL TOLERANCES (UNLESS SPECIFIED) | | EC NO: 627408 | | | | CLIK-MATE 1.5 SINGLE PLUG HSG | | | |
| ANGULAR TOL ± 3.0 ° | | DRWN: AISHIKAWA 2018/04/25 | | | | | | | |
| 4 PLACES ± 0.2 | | CHK'D: SAKIYAMA 2019/11/15 | | | | PRODUCT CUSTOMER DRAWING | | | |
| 3 PLACES ± 0.2 | | APPR: KOMURAKAMI 2019/11/20 | | | | | | | |
| 2 PLACES ± 0.2 | | INITIAL REVISION: | | | | DOCUMENT NUMBER 5025780000-SD | | | |
| 1 PLACE ± 0.2 | | DRWN: AISHIKAWA 2018/04/25 | | | | | | | |
| 0 PLACES ± 0.2 | | APPR: KOMURAKAMI 2019/11/20 | | | | DOC TYPE DOC PART REVISION PSD 000 A | | | |
| DRAFT WHERE APPLICABLE MUST REMAIN WITHIN DIMENSIONS | | THIRD ANGLE PROJECTION | DRAWING | SERIES | MATERIAL NUMBER | CUSTOMER | | SHEET NUMBER | |
| | | | A3-SIZE | 502578 | SEE CHART | | | 3 OF 4 | |

3 製品一覧 PRODUCTS LIST

| HOUSING COLOR | | | | | | | | | | |
|-----------------|-------------|-------------|-------------|-------------|-------------|-------------|-------------|-------------|------------------|------------------|
| 紫 VIOLET | 橙 ORANGE | 茶 BROWN | 緑 GREEN | 桃 PINK | 青 BLUE | 黄 YELLOW | 赤 RED | 黒 BLACK | ナチュラル NATURAL | |
| 502578 1509 | 502578 1508 | 502578 1507 | 502578 1506 | 502578 1505 | 502578 1504 | 502578 1503 | 502578 1502 | 502578 1501 | 502578 1500 | 15 |
| 502578 1409 | 502578 1408 | 502578 1407 | 502578 1406 | 502578 1405 | 502578 1404 | 502578 1403 | 502578 1402 | 502578 1401 | 502578 1400 | 14 |
| 502578 1309 | 502578 1308 | 502578 1307 | 502578 1306 | 502578 1305 | 502578 1304 | 502578 1303 | 502578 1302 | 502578 1301 | 502578 1300 | 13 |
| 502578 1209 | 502578 1208 | 502578 1207 | 502578 1206 | 502578 1205 | 502578 1204 | 502578 1203 | 502578 1202 | 502578 1201 | 502578 1200 | 12 |
| 502578 1109 | 502578 1108 | 502578 1107 | 502578 1106 | 502578 1105 | 502578 1104 | 502578 1103 | 502578 1102 | 502578 1101 | 502578 1100 | 11 |
| 502578 1009 | 502578 1008 | 502578 1007 | 502578 1006 | 502578 1005 | 502578 1004 | 502578 1003 | 502578 1002 | 502578 1001 | 502578 1000 | 10 |
| 502578 0909 | 502578 0908 | 502578 0907 | 502578 0906 | 502578 0905 | 502578 0904 | 502578 0903 | 502578 0902 | 502578 0901 | 502578 0900 | 9 |
| 502578 0809 | 502578 0808 | 502578 0807 | 502578 0806 | 502578 0805 | 502578 0804 | 502578 0803 | 502578 0802 | 502578 0801 | 502578 0800 | 8 |
| 502578 0709 | 502578 0708 | 502578 0707 | 502578 0706 | 502578 0705 | 502578 0704 | 502578 0703 | 502578 0702 | 502578 0701 | 502578 0700 | 7 |
| 502578 0609 | 502578 0608 | 502578 0607 | 502578 0606 | 502578 0605 | 502578 0604 | 502578 0603 | 502578 0602 | 502578 0601 | 502578 0600 | 6 |
| 502578 0509 | 502578 0508 | 502578 0507 | 502578 0506 | 502578 0505 | 502578 0504 | 502578 0503 | 502578 0502 | 502578 0501 | 502578 0500 | 5 |
| 502578 0409 | 502578 0408 | 502578 0407 | 502578 0406 | 502578 0405 | 502578 0404 | 502578 0403 | 502578 0402 | 502578 0401 | 502578 0400 | 4 |
| 502578 0309 | 502578 0308 | 502578 0307 | 502578 0306 | 502578 0305 | 502578 0304 | 502578 0303 | 502578 0302 | 502578 0301 | 502578 0300 | 3 |
| 502578 0209 | 502578 0208 | 502578 0207 | 502578 0206 | 502578 0205 | 502578 0204 | 502578 0203 | 502578 0202 | 502578 0201 | 502578 0200 | 2 |
| オーダー番号 ORDER No | | | | | | | | | | 極数 CIRCUIT No |

| HOUSING COLOR | | | |
|-----------------------|-----------------|-------------|-------------------|
| 黄緑 YELLOWISH GREEN | 水色 PALE BLUE | 灰 GRAY | |
| - | - | - | 15 |
| - | - | - | 14 |
| - | - | - | 13 |
| - | - | - | 12 |
| - | - | - | 11 |
| - | - | - | 10 |
| - | - | - | 9 |
| - | - | - | 8 |
| - | - | - | 7 |
| - | - | - | 6 |
| 502578 0516 | 502578 0514 | 502578 0511 | 5 |
| 502578 0416 | 502578 0414 | 502578 0411 | 4 |
| 502578 0316 | 502578 0314 | 502578 0311 | 3 |
| - | 502578 0214 | - | 2 |
| オーダー番号 ORDER No. | | | 極数 CIRCUIT No. |

| | | | | | | | | | | |
|---|--------------|-----------------------------|---------|--------|-----------------|----------------------------------|--|--------------|----------|----------|
| THIS DRAWING CONTAINS INFORMATION THAT IS PROPRIETARY TO MOLEX ELECTRONIC TECHNOLOGIES, LLC AND SHOULD NOT BE USED WITHOUT WRITTEN PERMISSION | | | | | | | | | | |
| DIMENSION UNITS mm | SCALE NTS | CURRENT REV DESC: | | | | molex | | | | |
| GENERAL TOLERANCES (UNLESS SPECIFIED) | | EC NO: 627408 | | | | | | | | |
| ANGULAR TOL | ± 3.0 ° | DRWN: AISHIKAWA 2018/04/25 | | | | CLIK-MATE 1.5 SINGLE PLUG HSG | | | | |
| 4 PLACES | ± 0.2 | CHK'D: SAKIYAMA 2019/11/15 | | | | | | | | |
| 3 PLACES | ± 0.2 | APPR: KOMURAKAMI 2019/11/20 | | | | PRODUCT CUSTOMER DRAWING | | | | |
| 2 PLACES | ± 0.2 | INITIAL REVISION: | | | | | | | | |
| 1 PLACE | ± 0.2 | DRWN: AISHIKAWA 2018/04/25 | | | | DOCUMENT NUMBER | | DOC TYPE | DOC PART | REVISION |
| 0 PLACES | ± 0.2 | APPR: KOMURAKAMI 2019/11/20 | | | | 5025780000-SD | | PSD | 000 | A |
| DRAFT WHERE APPLICABLE MUST REMAIN WITHIN DIMENSIONS | | THIRD ANGLE PROJECTION | DRAWING | SERIES | MATERIAL NUMBER | CUSTOMER | | SHEET NUMBER | | |
| | | | A3-SIZE | 502578 | | | | 4 OF 4 | | |