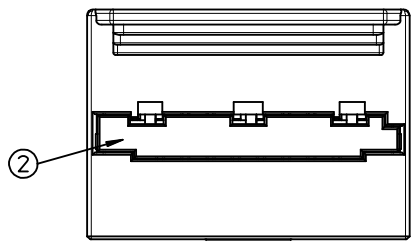
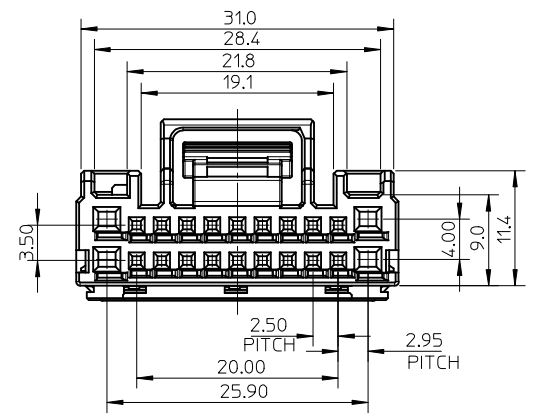
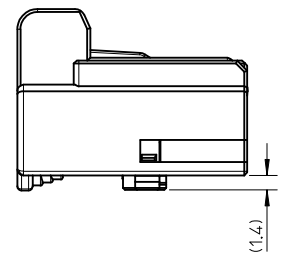
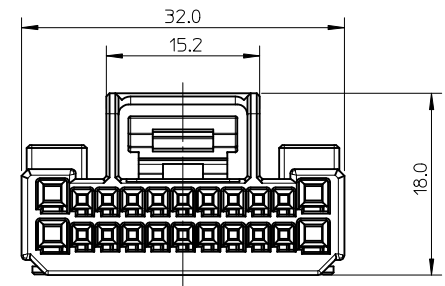
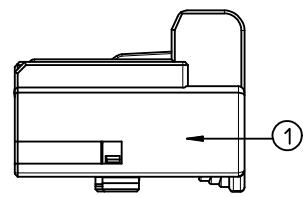
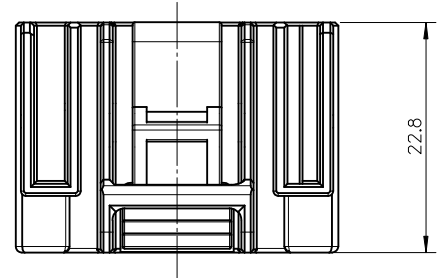
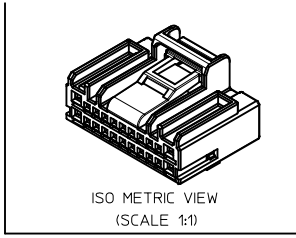


GENERAL TOLERANCE										USED ON
10 MAX	30 MAX	50 MAX	70 MAX	100 MAX	120 MAX	250 MAX	250 OVR	ANGLE	ECCENT	
±0.15	±0.20	±0.30	±0.40	±0.50	±0.75	±0.90	±1.4	±0.5°	0.1	



NOTES

1. MATERIAL : SEE TABLE
2. GENERAL TOLERANCE : SEE TABLE
3. APPLICABLE HEADER : 104212-6411
4. APPLICABLE TERMINAL :

TERMINAL SERIES	PART NO	CRIMPING RANGE	
		SO	WIRE
025	98658-1211	0.30-0.50	AVSS
	98658-1213	0.22-0.50	CHFUS
060	98195-1211	0.30-0.50	AVSS
	98195-1212	0.50-0.85	AVSS

NO	DESCRIPTION	MATERIAL	QUANTITY
2	TPA	PBT (YELLOW)	1
1	025 060 HYB FEMALE 22P (B)	PBT (GRAY)	1

ENTER DESCRIPTION
EC NO: KTR2015-0077
DRWN: JWK1M02 2015/05/14
CHKD:
APPR: JYCH01 2015/05/15

QUALITY SYMBOLS	GENERAL TOLERANCES (UNLESS SPECIFIED)	
	mm	INCH
$F_A=0$	4 PLACES ± --- ± ---	
$F_G=0$	3 PLACES ± --- ± ---	
$F_C=0$	2 PLACES ± --- ± ---	
$F_B=0$	1 PLACE ± --- ± ---	
	0 PLACE ± --- ± ---	
	ANGULAR ± --- °	

DIMENSION STYLE
MM ONLY

DRAWN BY: JWK1M02
DATE: 2015/05/14

CHECKED BY: BCY00N

APPROVED BY: JYCH01
DATE: 2015/05/15

MATERIAL NO. SEE TABLE

SIZE: A3

SCALE: 2:1

DESIGN UNITS: METRIC

THIRD ANGLE PROJECTION

TITLE: 025 060 HYB FEMALE CONNECTOR ASSY 22P_B

molex

DOCUMENT NO. SD-104213-002

SHEET NO. 1 OF 1

THIS DRAWING CONTAINS INFORMATION THAT IS PROPRIETARY TO MOLEX INCORPORATED AND SHOULD NOT BE USED WITHOUT WRITTEN PERMISSION

1042132211	104213-2211
MATERIAL NO.	ORDER NO.