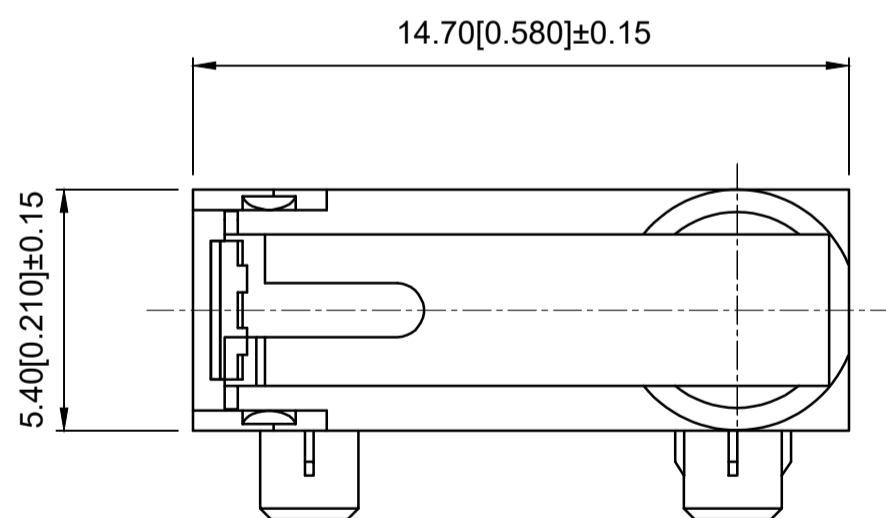
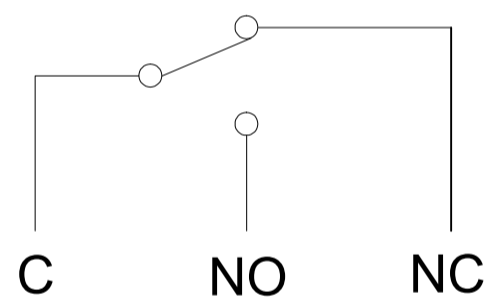


Circuit diagram



1	Rubber shell	PA66
2	Seal ring	Silica gel
3	Base	Brass+PA66
4	According to sincerity	Pom
5	Contact moving plate	Phosphor bronze
6	Strut	SUS

Technical Parameters

技术参数

- Electrical Rating: 0.1A 125/250VAC
3A/12VDC; 0.1A/48VDC
1.电气额定值: 0.1A 125/250VAC
3A/12VDC; 0.1A/48VDC
- Electrical lifetime: 100,000 cycles
2.电气寿命: 100,000 cycles
- Mechanical lifetime: 100,000 cycles
3.机械寿命: 100,000 cycles
- Contact Resistance: ≤50mΩ
4.接触电阻: ≤50兆欧
- Operating force: 2.2N MAX
5.操作力: 2.2N MAX
- Operation Position: 7.1±0.5mm
6.动作位置: 7.1±0.5mm
- Pretravel: 3.0mm
7.动作行程: 3.0mm
- Withstand Voltage: Feet and Feet 500V/5S/5mA
Feet and Shell 1500/5S/5mA
8.耐压: 脚与脚 500/5s/5mA
脚与壳 1500/5S/5mA
- Insulation Resistance: ≥100MΩ
9.绝缘电阻: ≥100MΩ
- Proof Tracking Index(PTI): 175V
10.漏电起痕指数 (PTI): 175V
- Ambient temperature: 125°
11.环境温度: 125°
- Waterproof grade: IP67
12.防水等级: IP67
- working temperature: -25°C ~ + 105°C
13.工作温度: -25°C ~ + 105°C

A4				
A3				
A2				
A1				
REV	DATE	REVISION	DESCRIPTION	ISSUE



COMMON TOLERANCE

X.XX	± 0.10
X.X	± 0.15
X	± 0.25
ANGULAR	—

UNIT	MM	PROJECTED		PRODUCT NAME:
DRAWN BY	FUYUAN	CHECKED BY	COCO	MODEL NO: TP3305141365
DATE	2019	APPROVAL B	ALEN	Https: www.rocpcu.tw

ROCPCU TECHNOLOGY CO.,LTD

Copies are issued in strict confidence and shall not be reproduced or copied, or used as the basis of manufacture or sale of apparatus without permission