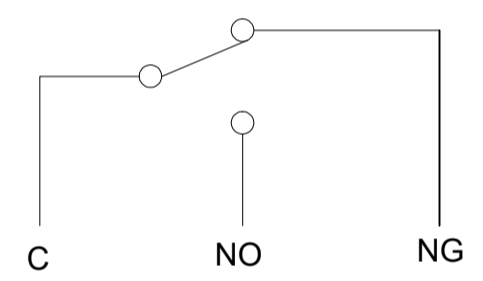
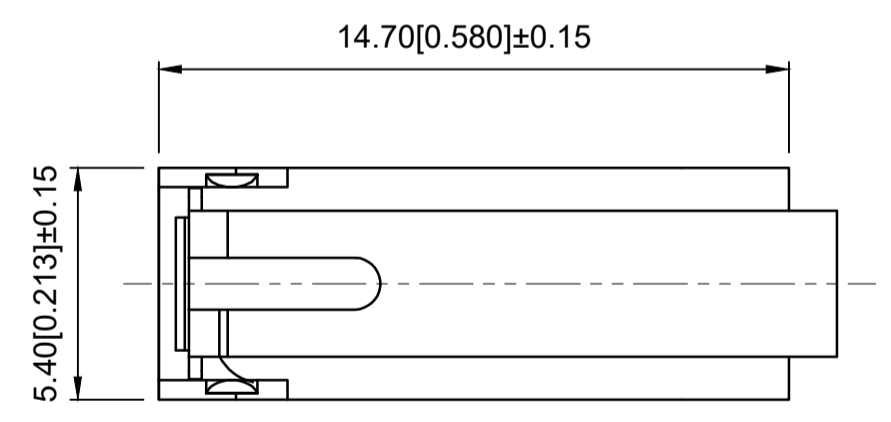


Circuit diagram



Technical Parameters
技术参数

- 1. Electrical Rating: 3A/12VDC; 0.1A/48vdc
1. 电气额定值: 3A/12VDC; 0.1A/48vdc
- 2. Electrical lifetime: 100,000 cycles
2. 电气寿命: 100,000 cycles
- 3. Mechanical lifetime: 100,000 cycles
3. 机械寿命: 100,000 cycles
- 4. Contact Resistance: ≤50mΩ
4. 接触电阻: ≤50兆欧
- 5. Operating force: 1.95N MAX
5. 操作力: 1.95N MAX
- 6. Free Position: 7.0mm
6. 自由位置: 7.0mm
- 7. Operation Position: 3.7±0.6mm
7. 动作位置: 3.7±0.6mm
- 8. Pretravel: 3.5mm
8. 动作行程: 3.5mm
- 9. Withstand Voltage: Feet and Feet 500V/5S/5mA
Feet and Shell 1500/5S/5mA
9. 耐压: 脚与脚 500/5s/5mA
脚与壳 1500/5S/5mA
- 10. Insulation Resistance: ≥100MΩ
10. 绝缘电阻: ≥100MΩ
- 11. Proof Tracking Index (PTI): 175V
11. 漏电起痕指数 (PTI): 175V
- 12. Ambient temperature: 125°
12. 环境温度: 125°
- 13. Waterproof grade: IP67
13. 防水等级: IP67
- 14. working temperature: -25~ + 105°C
14. 工作温度: -25~ + 105°C



1	Rubber shell	PA66
2	Seal ring	Silica gel
3	Base	Brass+PA66
4	According to sincerity	Pom
5	Contact moving plate	Phosphor bronze
6	Strut	SUS

A4				
A3				
A2				
A1				
REV	DATE	REVISION	DESCRIPTION	ISSUE



COMMON TOLERANCE	
X.XX	± 0.10
X.X	± 0.15
X	± 0.25
ANGULAR	—

UNIT	MM	PROJECTED		PRODUCT NAME:
DRAWN BY	FUYUAN	CHECKED BY	COCO	MODEL NO: TP3302111530
DATE	2019	APPROVAL B	ALEN	Https: www.rocpcu.tw

ROCPCU TECHNOLOGY CO., LTD

Copies are issued in strict confidence and shall not be reproduced or copied, or used as the basis of manufacture or sale of apparatus without permission