



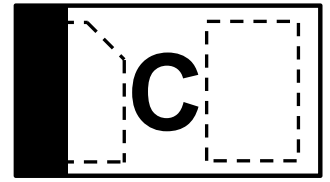
RB521CS-30DB

Schottky Barrier Rectifiers

Features

- Small surface mounting type
- High reliability
- Low reverse current and low forward voltage

DFN1x0.6-2L



Marking Code:C

Absolute Maximum Ratings ($T_A=25^\circ\text{C}$)

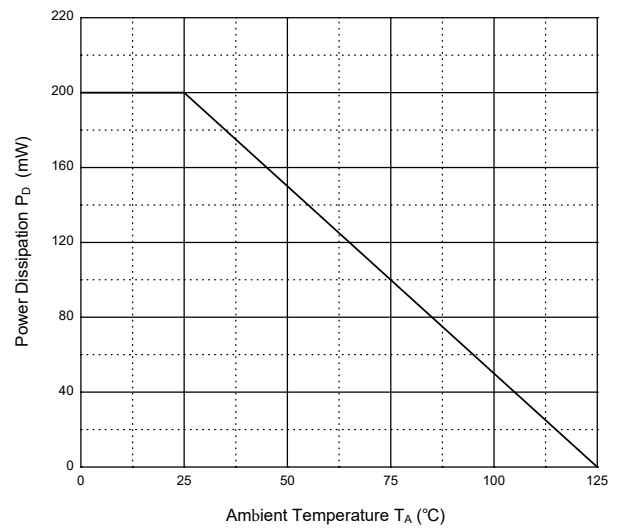
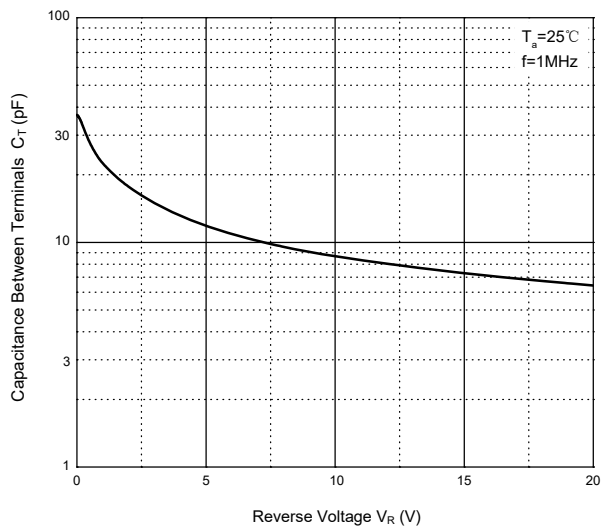
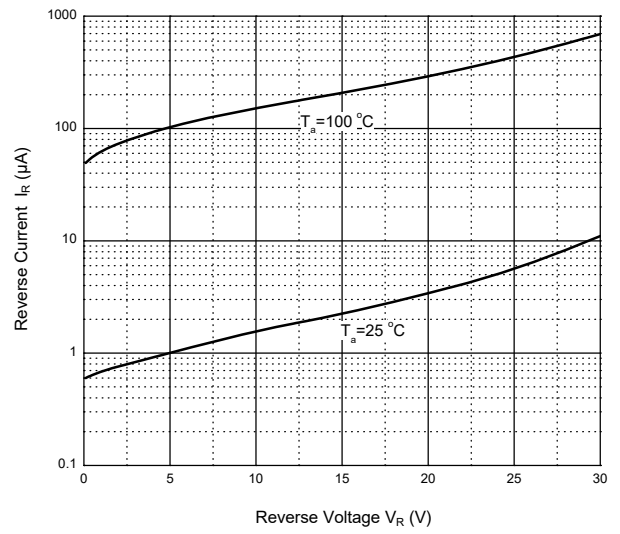
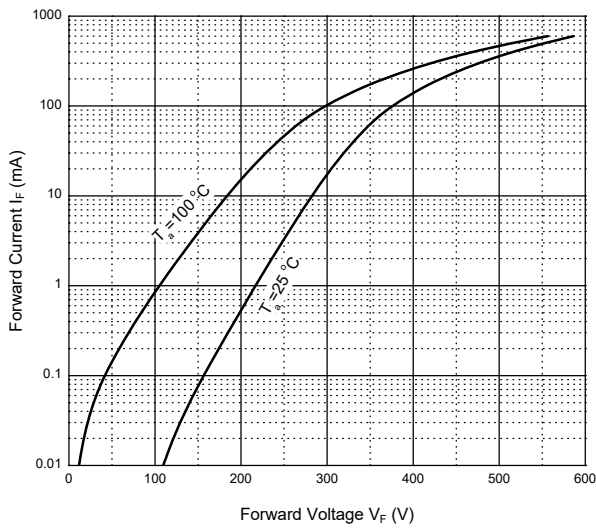
Parameter	Symbols	Value	Unit
DC Reverse Voltage	V_R	30	V
Mean Rectifying Current	I_o	200	mA
Non-repetitive Peak Forward Surge Current at $t=8.3\text{ms}$	I_{FSM}	0.5	A
Power dissipation	P_D	200	mW
Thermal Resistance Junction to Ambient	$R_{\theta JA}$	500	$^\circ\text{C}/\text{W}$
Operating Junction Temperature	T_J	125	$^\circ\text{C}$
Storage Temperature Range	T_{STG}	-40 to +125	$^\circ\text{C}$

Electrical Characteristics ($T_A=25^\circ\text{C}$)

Parameter	Symbols	Max.	Unit
Forward Voltage at $I_F = 10\text{mA}$ at $I_F = 20\text{mA}$	V_F	0.35 0.40	V
Reverse Current at $V_R = 10\text{V}$	I_R	30	μA



Typical Characteristic Curves



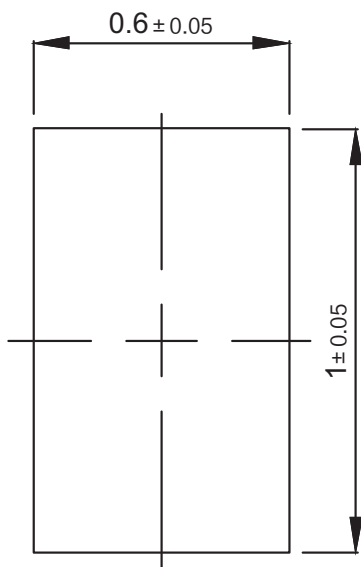


RB521CS-30DB Schottky Barrier Rectifiers

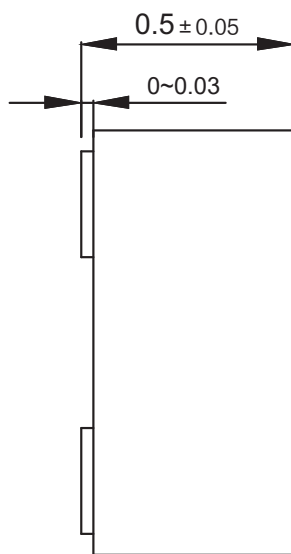
Package Outline

DFN1x0.6-2L-0011

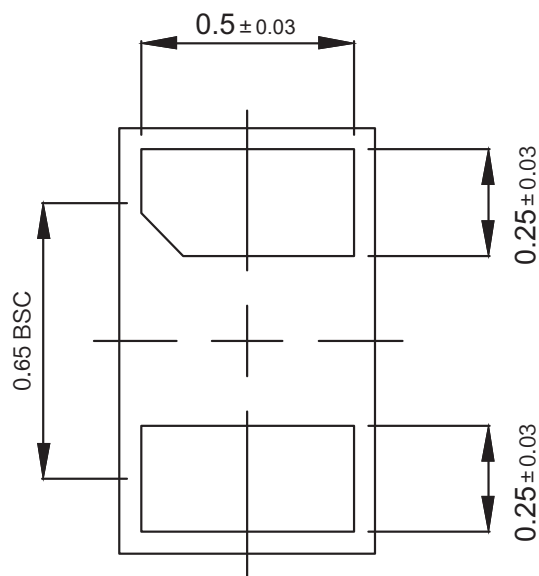
Dimensions in mm



TOP VIEW



SIDE VIEW



BOTTOM VIEW

Ordering Information

Device	Package	Shipping
RB521CS-30DB	DFN1x0.6-2L	10,000PCS/Reel&7inches