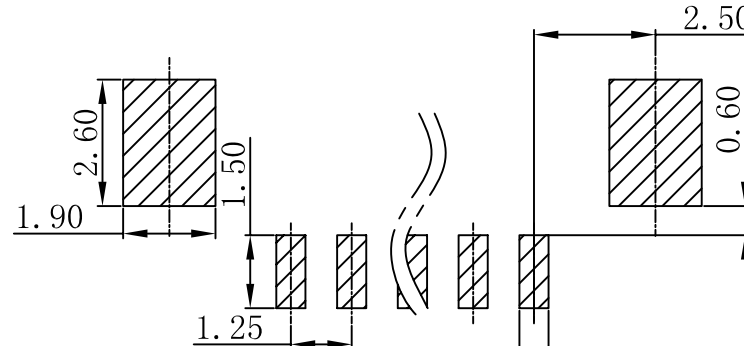
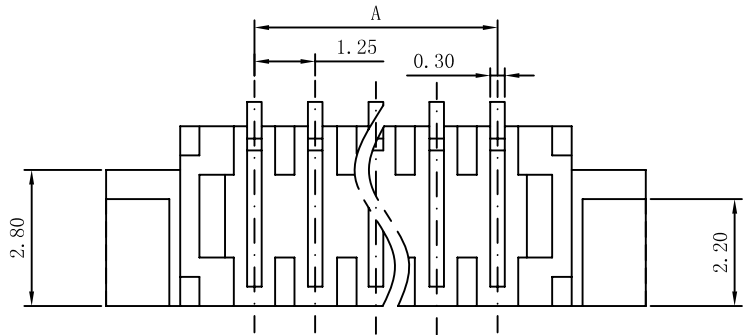
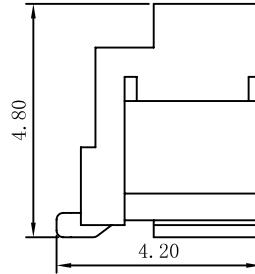
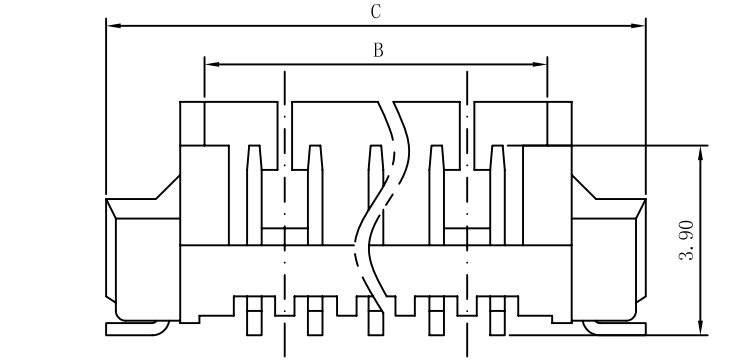
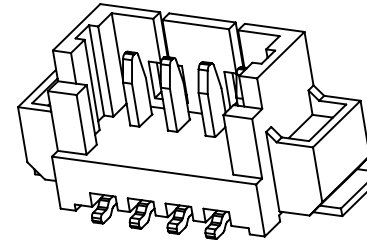


PITCH 1.25mm BAR CONNECTORS

性能:

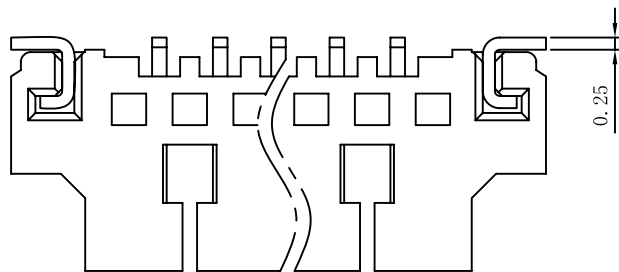
- 额定电流: 1A
- 额定电压: 100V
- 耐电压: 500V
- 接触电阻: $\leq 20m\Omega$
- 绝缘电阻: $500M\Omega$
- 工作温度: $-20^{\circ}C \sim +85^{\circ}C$

- 塑件(材质): LCP, UL94V-0
- 插簧(材质): 磷青铜, 镀锡/镀金
- 焊片(材质): 磷青铜, 镀锡/镀金



线路板
P. C. B Layout

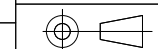
孔位	A	B	C
2	1.25	3.10	7.35
3	2.50	4.35	8.60
4	3.75	5.60	9.85
5	5.00	6.85	11.10
6	6.25	8.10	12.35
7	7.50	9.35	13.60
8	8.75	10.60	14.85
9	10.00	11.85	16.10
10	11.25	13.10	17.35
11	12.50	14.35	18.60
12	13.75	15.60	19.85
13	15.00	16.85	21.10
14	16.25	18.10	22.35
15	17.50	19.35	23.60
16	18.75	20.60	24.85
17	20.00	21.85	26.10
18	21.25	23.10	27.35
19	22.50	24.35	28.60
20	23.75	25.60	29.85



Product No: AFC12-S
 CKTS **
 CONTACTS TYPE C
 C:Upper
 D:Lower
 PLATING
 1:Gold flash 1u"
 2:Gold flash 2u"
 3:Gold flash 3u"
 B:Bright-Tin 90-120u"
 C:Matt-Tin 90-120u"
 PACKING
 A:Tape&Reel
 C:Tube

REMARKS
 HF:Halogen free

X. ± 0.3		X° $\pm 5^{\circ}$		UNITS mm	NAME (INTENDED USE)		
.X ± 0.25		.X° $\pm 2^{\circ}$		MAT'L	1.25mm (C型)条形连接器立贴式		
.XX ± 0.20		.XX° $\pm 1^{\circ}$			PART NO. (INTENDED USE)		
.XXX ± 0.10		.XXX° $\pm 0.5^{\circ}$		FINISH	AFC12-S**CCA-00		
THESE DRAWINGS AND SPECIFICATIONS ARE THE PROPERTY OF DE RUI ELECTRON FACTORY AND SHALL NOT BE REPRODUCED, COPIED OR USED IN ANY MANNER WITHOUT THE PRIOR WRITTEN CONSENT OF DE RUI ELECTRON FACTORY					Q'TY	TITLE: 1.25mm (C型)条形连接器立贴式	
					CHKD:	DWG NO.: 125N05-CUB0000000	
				DR: YLZ 2011.09.28	SCALE	SHEET	REV.
					1/1	1/1	A



深圳市钜硕电子有限公司