

东 莞 市 皓 富 电 子 科 技 有 限 公 司

SPECIFICATION

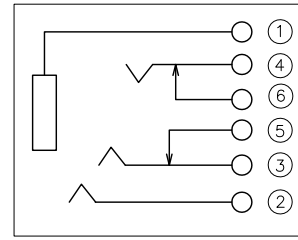
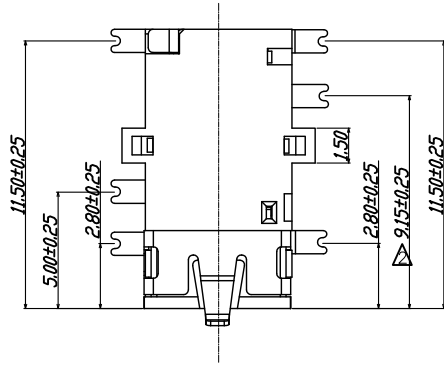
規 格 書

| | | | |
|---|--|--|--|
| Designation 品名: | PHONE JACK | | |
| Model No. 型號: | PJ-399E-W | | |
| 1. Rating 額定值: | DC 30V 1.0A | | |
| 2. Operation temperature range 使用溫度範圍: | -40°C~+55°C | | |
| 3. Preservative temperature range 保存溫度範圍: | -40°C~+85°C | | |
| 4. Construction dimension 結構尺寸: | Apply to the appended drawing: 符合附加圖紙 | | |
| 5. The packing way 包裝方式: | Reels, a reel of 1000 PCS: 袋裝, 一袋 1000 個 | | |
| Item 項目 | Test condition 測試條件 | | Specification 規格 |
| 5. Electrical characteristics 電氣性能 | | | |
| 5A | Contact Resistance 接觸阻抗 | Being measured at 1KHz small current contact resistance meter. 在 1KHZ 小電流下測量. | 50mΩ max. 50 毫歐以下. |
| 5B | Insulation Resistance 絕緣阻抗 | Measurements shall be made following application of DC 250V potential across terminals and across terminals and frame for 1 minute. 在端子之間和端子與殼之間加 DC 250V 條件下,持續 1 分鐘測量. | 100MΩ min. 100 兆歐以上. |
| 5C | Withstand Voltage 耐電壓 | AC 500V (50Hz or 60Hz) shall be applied across terminals and across terminals and frame for one minute. 在端子之間和端子與殼之間加 AC 500V(50HZ 或 60HZ)條件下,持續 1 分鐘測量. | There shall be no breakdown. 無擊穿現象出現. |
| 6. Mechanical characteristics 機械性能 | | | |
| 6A | Insertion and Extraction force 插拔力 | Being measure at across spring piece and across matching plug for ergometer. 用測力計在插頭與彈片之間進行測量. | Insertion and extraction force: 3~30N 插拔力: 3~30N |
| 6B | Terminal Strength 端子強度 | A static force of 5N being applied in one direction on the tip of terminal for 10sec. 將 5N 之靜負荷施加於端子頂部的一個方向持續 10 秒。 | (1). Contact resistance:50mΩmax. 接觸阻抗: 50 毫歐以下. (2). Insertion and withdraw force: 3~30N 插入力和拔出力: 3~30N (3). Electrical characteristics and mechanical characteristics shall be satisfied. Without distinct damage. 機械, 电气性能滿足規定要求, 无异常发生 |
| 7. Durability 耐久性 | | | |
| 7A | Soldering test 可焊性試驗 | The tip of the terminals shall be dipped 2mm in the solder bath at a temperature of 240±5°C for 3±0.5sec. 端子頂部被浸入焊錫池 2mm 深,溫度 240±5°C,時間 3±0.5 秒。 | A new uniform coating of solder shall cover a minimum of 95% of the surface being immersed. 浸入的部分 95%以上表面將被錫覆蓋. |
| 7B | Resistance to soldering heat 耐焊接熱 | The jack shall be put into at the temperature of 250±5°C in 5±1sec(Automatic soldering) or 380±5°C in 3±1sec(Manual soldering) after which measurement shall be made. 將產品端子浸入錫爐, 250±5°C, 5±1 秒(自動焊); 380±5°C, 3±1 秒(手工焊) | (1). Contact resistance: 50mΩmax. 接觸阻抗:50 毫歐以下. (2). Insertion and withdraw force:3~30N 插入力和拔出力: 3~30N (3). Electrical characteristics and mechanical characteristics shall be satisfied. Without distinct damage. 機械, 电气性能滿足規定要求, 无异常发生 |
| Remark 備註 | | | |

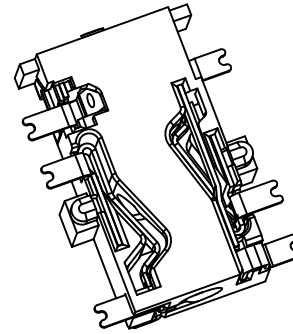
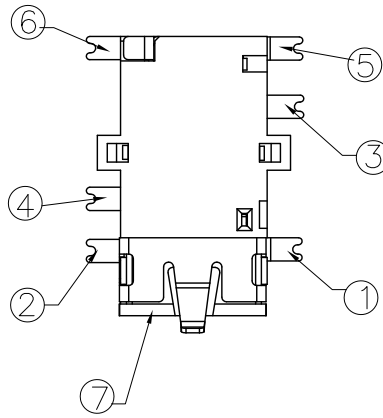
SPECIFICATION

規格書

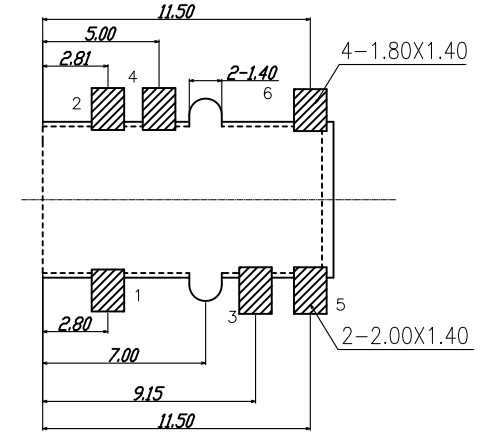
| Model No. 型號: | | PJ-399E-W | |
|---|-------------------------|--|---|
| Item 項目 | | Test condition 測試條件 | Specification 規格 |
| 7C | Life test 壽命試驗 | 5,000 cycles of operation at a rate of 5~10 cycles per minute with unloading. 無負載條件下,每分鐘 5~10 次的速度操作 5,000 次。 | (1). Contact resistance:50mΩmax. 接觸阻抗:50 毫歐以下. (2). Insertion and withdraw force: 3~30N 插入力和拔出力: 3~30N (3). Electrical characteristics and mechanical characteristics shall be satisfied. Without distinct damage. 機械, 电气性能满足规定要求, 无异常发生 |
| 7D | Heat test 耐熱試驗 | At 85±2°C for 96 hours, after test keep in normal condition for 30 minutes. 在 85±2°C 環境中放 96 小時,再放在正常環境中 30 分鐘後進行測試。 | (1). Contact resistance:50mΩmax. 接觸電阻:50 毫歐以下 (2). Insulation resistance: 100MΩmin. 絕緣電阻: 100 兆歐以上 (3). There shall be no sign of damage mechanically and electrically. 無任何迹象顯示機械及電器性能之損壞。 |
| 7E | Humidity test. 耐濕試驗 | The condition of temperature 40±2°C and humidity 90-95% for 96 hours, after test keep in normal condition for 30 minutes. 在溫度 40±2°C,濕度 90-95%環境中放 96 小時,再放在正常環境中 30 分鐘後進行測試。 | |
| 7F | Cold test 耐寒試驗 | At -40±2°C for 96 hours, after test keep in normal condition for 30 minutes. 在 -40±2°C 環境中放 96 小時,再置於正常環境中 30 分鐘後進行測試。 | |
| 7G | Salt spray test 噴霧試驗 | At 5% Nacl liquor for 24 hours, after washing, keep in normal condition for 30 minutes. 5%的Nacl 溶液中噴霧 24 小時,用水清洗並在室溫下放置 30 分鐘。 | Without excessive Corrosion or crack in appearance 表面無明顯腐蝕或鍍層脫落現象 |
| 8. Standard condition 試驗、測定狀態 | | | |
| <p>Unless otherwise specified, the test and measurements shall be carried out as follows:</p> <p>Ambient temperature 溫度: 5°C~35°C Relative humidity 相對濕度: 45~85% Air pressure 氣壓: 86~106kPa(860~1060mbar)</p> <p>However if doubt arises on the decision based on the measured values under the above-mentioned conditions, the following condition shall be employed:但在對判定產生疑義時, 按下述狀態實施:</p> <p>Ambient temperature 溫度: 20±2°C Relative humidity 相對濕度: 65±5% Air pressure 氣壓: 86~106kPa(860~1060mbar)</p> | | | |
| Remark 備註 | | | |



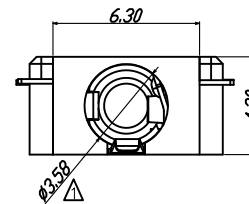
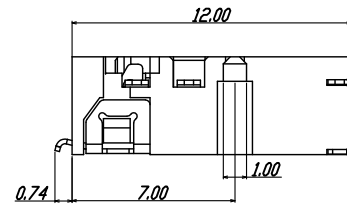
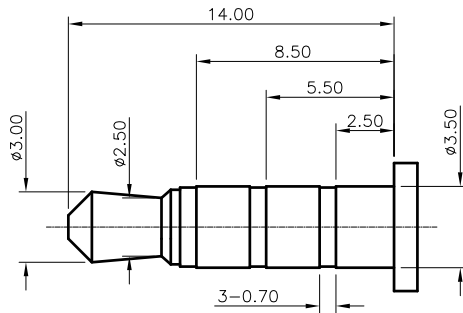
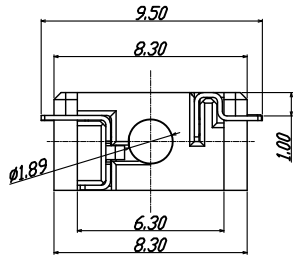
SCHEMATIC



3D VIEW



P.C.B LAYOUT
TOP VIEW



NOTES:

1. REQUEST OF THE SPECIFICATION:

- 1.1 CONTACT CURRENT RATING: 1A.;
- 1.2 CONTACT RESISTANCE: 50 mΩ MAX.;
- 1.3 INSULATION RESISTANCE: 100MΩ MIN.;
- 1.4 DIELECTRIC WITHSTANDING: 500V AC MIN.;
- 1.5 DURABILITY: 5,000 CYCLES MIN.;
- 1.6 CONNECTOR MATING FORCES: 29.8N (3.00KgF) MAX.;
- 1.7 CONNECTOR UNMATING FORCES: 2.98N(0.30KgF) MIN.;

| ITEM | NAME | Q'TY | DESCRIPTION | NOTE |
|------|-------------|------|---|------|
| 7 | TERMINAL 6# | 1 | | |
| 6 | TERMINAL 5# | 1 | PHOSPHOR BRONZE; NICKEL UNDER PLATING OVERALL,GOLD PLATING ON SOLDER AREA ;GOLD PLATING ON CONTACT AREA | |
| 5 | TERMINAL 4# | 1 | | |
| 4 | TERMINAL 3# | 1 | PHOSPHOR BRONZE; NICKEL UNDER PLATING OVERALL,GOLD PLATING ON SOLDER AREA ;GOLD PLATING ON CONTACT AREA | |
| 3 | TERMINAL 2# | 1 | | |
| 2 | TERMINAL 1# | 1 | PHOSPHOR BRONZE; THE BOTTOM OF THE NICKEL; THE WHOLE GOLD PLATING. | |
| 1 | HOUSING | 1 | PPA COLOR BLACK | |

HADFU ELECTRONCS TECHNOLOGY CO.,LTD

COPYRIGHT RESERVED,PLEASE DO NOT COPY.

| | | | | | | | |
|--------------|-----------|------------|------|----------|-----------|---------|--------|
| PART NAME | | PHONE JACK | | DRAWING | Y,C,ZHANG | DWG.No. | SBICL |
| PART NO. | | PJ-399E-W | | CHECK | G.C.Chen | REV. | A1 |
| UNIT : mm | TOLERANCE | UP TO 5 | ±0.2 | APPROVAL | SCALE | DATE | |
| | OTHERWISE | ABOVE 5~30 | ±0.3 | | | PAGE | 1 OF 1 |
| | | ABOVE 30 | ±0.5 | | | | |
| | | ANGLE | ±3° | | | | |