

Specifications:

规格:  
 Voltage rating:500VAC/DC  
 额定电压: 500V AC/DC  
 Current rating:5A AC/DC  
 额定电流: 5A AC/DC  
 Withstanding voltage:500V AC/minute  
 耐受电压: ≥500V AC/分钟  
 Temperature range:-25℃~+85℃  
 温度范围: -40℃~+105℃  
 Insulation resistance:500MQMIN  
 绝缘电阻: ≥500MΩ  
 Contact resistance:30mΩMax  
 接触电阻: ≥30mΩ

Material:

材料:  
 Rubber core:PBT+30% G.F(UL94V-0)-WH  
 胶芯: PBT+30% G.F(UL94V-0)-WH  
 Car PIN:C3604(BRASS)AU 1U  
 车PIN:C3604(BRASS)镀金1u  
 The iron shell:SPCC Nivkel Plating/Tin Plating  
 铁壳: SPCC 镀镍/镀锡

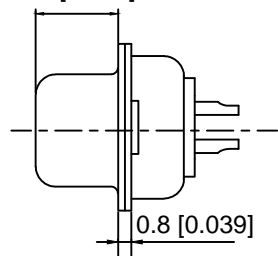
Attention:

The matters needing attention  
 A、Salt spray test for 24H cannot have  
 A、盐雾测试过24H不能有氧化生锈现象  
 B、The finished product cannot have curved curved needle as well as the R  
 Angle is.  
 B、成品不能有弯针，R角不一致等不良。

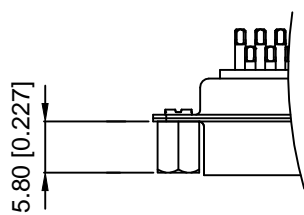
X01 XX W X X X X  
 ① ② ③ ④ ⑤ ⑥ ⑦

- ① Series NO.
- ② Row No.Pin No.XX-09;15;25;37
- ③ Welding Board Angle :W-male
- ④ T: Tradutional C: Car-pin
- ⑤ Planting Categoty: 1:1U 2:2U 3:3U 4:5U 5:15U 6:30U 7 : AuSn
- ⑥ B:BLACK W:White BL:Blue Y:Yellow G:Green R:Red
- ⑦ 1:TYPE-1; 2:TYPE-2; 3:TYPE-3; 4:TYPE-4; 5:TYPE-5

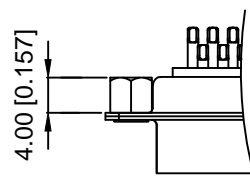
6.2 [0.242]



TYPE-2加前铆 (不通孔)



TYPE-3加后铆 (通孔)



NO of C0ntact	A±0.25	B±0.13	C±0.38	D±0.25
9	16.92	24.99	30.81	19.28
15	25.25	33.32	39.14	27.51
25	38.96	47.04	53.04	41.28
37	55.42	63.05	69.32	57.71

DSND		DATE	SCALE: N/A	MODEL TYPE:
DWN		DATE	VIEW:	PART NO.:
CHKD		DATE	UNIT: mm/in	DWG NO.:
APPD		DATE	SIZE: A4	X01XXWXXXX
XKB INDUSTRIAL PRECISION CO.,LIMITED				WEIGHT
				SHEET
				REVISION
				1.0g
				1/1
				A0

MARK	DESCRIPTION	DATE	REVISED	APPROVED	units: mm
					tolerance:
					X.X ±0.2mm
					X.XX ±0.1mm
					X.XXX ±0.05mm
REVISIONS					UNSPECIFIED TOLERANCES
www.xk-dg.cn www.helloxkb.com www.helloxkb.cn					