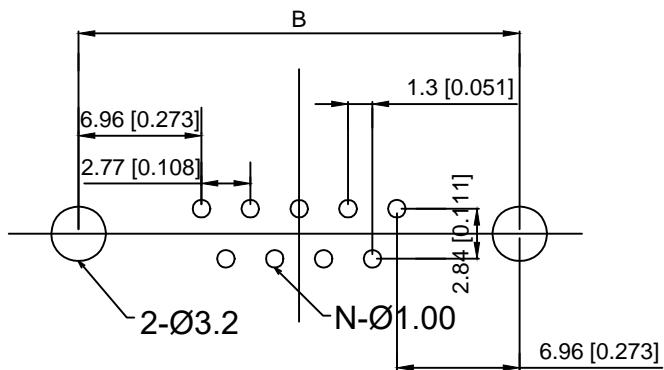
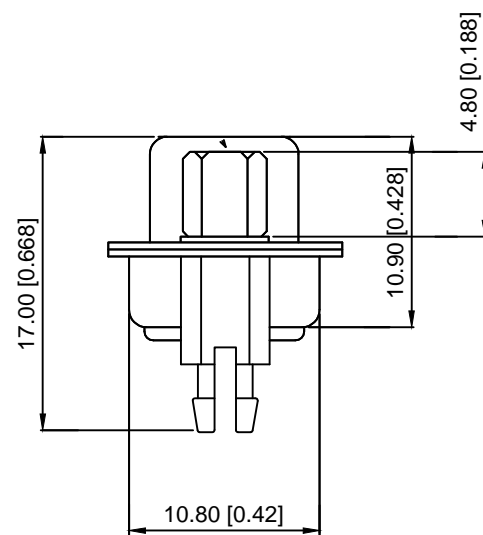


Specifications:  
 规格:  
 Current rating:5A AC/DC  
 额定电流: 5A AC/DC  
 Withstanding voltage:500V AC/MAX  
 耐受电压: ≤500V AC/分钟  
 Temperature range:-25℃~+85℃  
 温度范围: -55℃~+85℃  
 Insulation resistance:1000MΩMIN  
 绝缘电阻: ≥1000MΩ  
 Contact resistance:30mΩMAN  
 接触电阻: ≤30mΩ  
 Material:  
 材料:  
 Contacts:Brass C2680  
 接触: 黄铜 C2680  
 Insulator:PBT+G.F  
 绝缘体: PBT+G.F  
 SHELL:SPCC  
 外壳: 铁



PCB LAYOUT



X02 XX F X X X 5  
 ① ② ③ ④ ⑤ ⑥ ⑦

- ① Series NO.
- ② Row No.Pin No.XX-09;15;25;37
- ③ Welding Board Angle :F-Fmale
- ④ T: Tradutional C: Car-pin
- ⑤ Planting Category: 1:1U 2:2U 3:3U 4:5U 5:15U 6:30U 7:AuSn
- ⑥ B:BLACK W:White BL:Blue Y:Yellow G:Green R:Red
- ⑦ 5:Front lock screw after riveting

NO.POS	A±0.38	B±0.13	C±0.20	D±0.38
9PIN	30.80	24.99	16.33	19.28
15PIN	39.20	33.32	24.66	27.65
25PIN	53.10	47.04	38.35	41.20
37PIN	69.40	63.50	54.80	57.44

					units: mm	DSND	DATE	SCALE: N/A	MODEL TYPE:
Δx					tolerance:	DWN	DATE	VIEW:	PART NO.:
Δx					X.X	CHKD	DATE	UNIT: mm/in	DWG NO.:
Δx					X.XX	APPD	DATE	SIZE: A4	X02XXFXXX5
MARK	DESCRIPTION	DATE	REVISED	APPROVED	X.XXX				WEIGHT
					UNSPECIFIED TOLERANCES	XKB INDUSTRIAL PRECISION CO.,LIMITED			1.0g
REVISIONS									SHEET
www.xk-dg.cn www.helloxkb.com www.helloxkb.cn									1/1
									REVISION
									A0