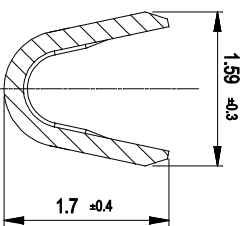
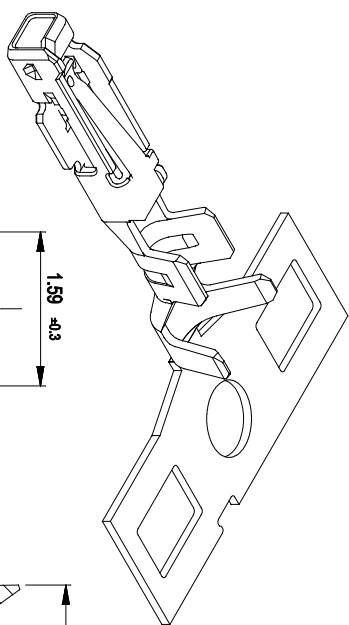
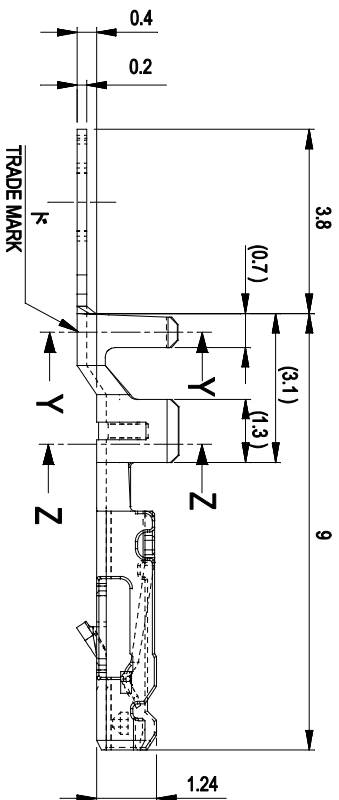
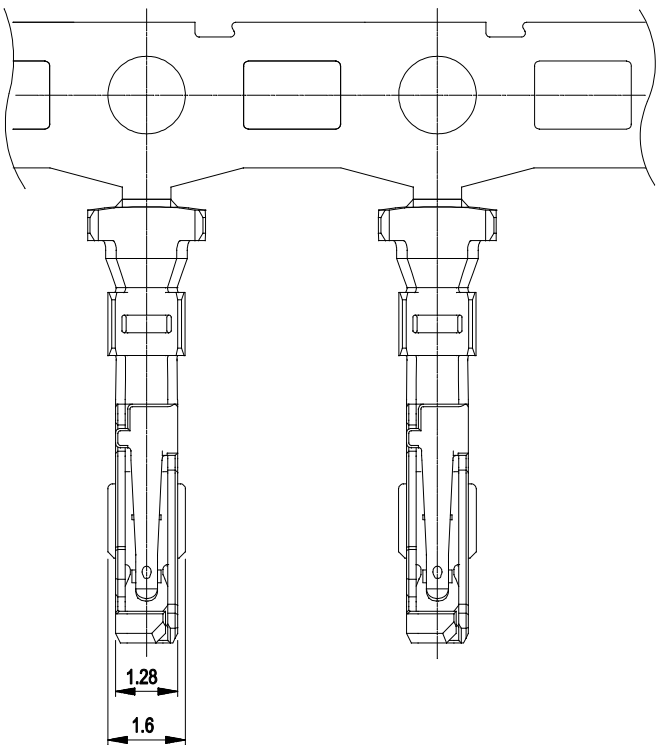


ROHS PASS HF PASS ASSEMBLY DRAWING

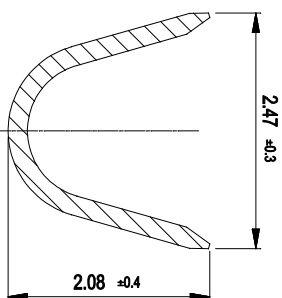
REV	ECN NO	LOCATIONS	DESCRIPTION	DATE	DESIGN
AD			NEW RELEASED	10/10'21	SXY

NOTES

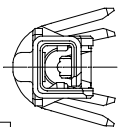
1. MATERIAL AND FINISHES: SEE TABLE 1.
2. PLEASE REFER TO SHEET 2 FOR APPLICABLE PRODUCT AND VARIOUS SPECIFICATIONS.
3. THIS PRODUCT IS APPLICABLE TO AWG#22-26.
4. THIS PRODUCT IS A TIN PLATING.



SECTION Z-Z
SCALE 20:1



SECTION Y-Y
SCALE 20:1



INS. RANGE	WIRE RANGE	PACKAGING	PART NO.	FORM
Ø0.95- Ø1.5mm	AWG#22-26 0.126-0.34 mm ²	POLY BAG REEL	201-0501-0020-2 201-0501-0020-1	LOOSE CHAIN

TABLE 1

PART	MATERIAL	COPPER ALLOY
	TERMINAL	REFLOW TREATMENT (PRE-PLATING)
	PLATING	MATTE TIN

ZYCON

THIS DRAWING CONTAINS INFORMATION THAT IS PROPRIETARY TO ZYCON INCORPORATED AND SHOULD NOT BE USED WITHOUT WRITTEN PERMISSION

DRAW NO:	DATE	MATERIAL:	SEE NOTE 1	DRAW NAME:
DESIGN:	SXX	FINISH:	/	GRID 2.0 WIRE TO BOARD
CHECK:	ALLEN	FILE:	/	CRIMP TERMINAL
REVIEW:	ALLEN	P/N NO.:	201-0501-0020-X	TIN PLATING AWG#22-26
APPROVED:	NIKE	REV:	AD	SCALE:
				N/A
DIM	TOL	DEC	TOL	UNIT:
X	±1.0	X*	±1*	SHEET
XX	±0.25	X**	±0.5*	1/1
XXX	±0.20	X***		
X,XXX	±0.10	X,XXX*		

Complying with the requirements of environmental management substances stipulated in SE-QP-33 HSF Technical Standards. (符合《SE-QP-33 HSF管制技2641526631准》中35268定29615境管理物36136要求)