

915MHz 1204 Chip Antenna: ANT1204R09151KM1

Application:

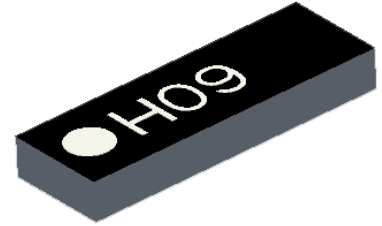
GSM · IoT, etc...

Features

SMD, high reliability, ultra Impact, Omni-directional...

Part number

ANT 1204 R 0915 1K M1
 (1) (2) (3) (4) (5)



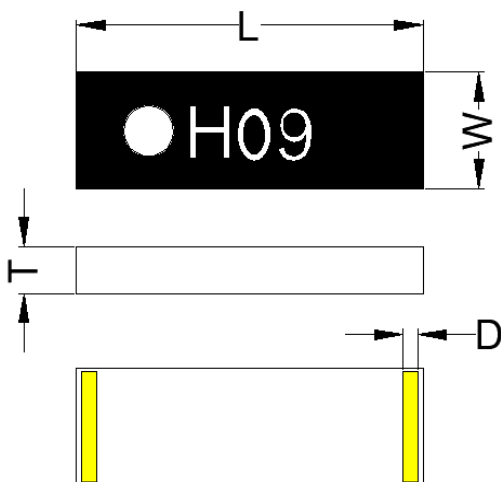
(1) Size Code	12x0.4mm
(2) Packing	Tape and reel
(3) Frequency	915MHz
(4) Packing Number	1K
(5) Code	M1

Electrical Specification

Centre Frequency	915 MHz
Peak Gain	-0.8 dBi (Typ.)
Impedance	50 Ohm
VSWR	2.5 Max
Polarization	Linear
Azimuth Beam width	Omni-directional
Operation Temperature(°C)	-40~85°C

The specification is defined on EVB.

Dimension and Terminal Configuration

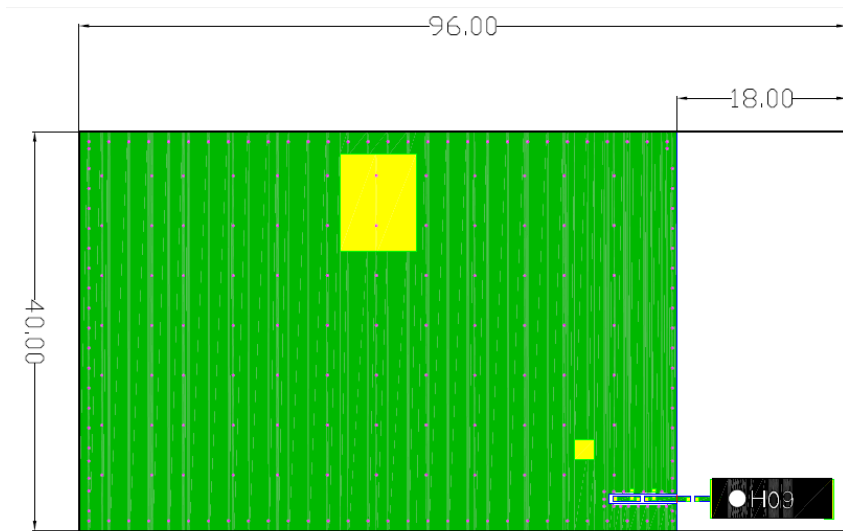


Dimension (mm)	
L	12.0+-0.30
W	4.0+-0.30
T	1.6+-0.20
A	0.90+-0.20

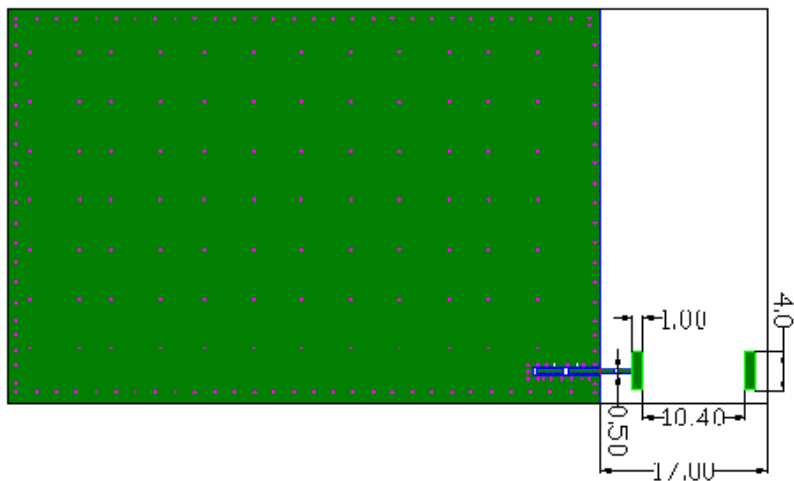
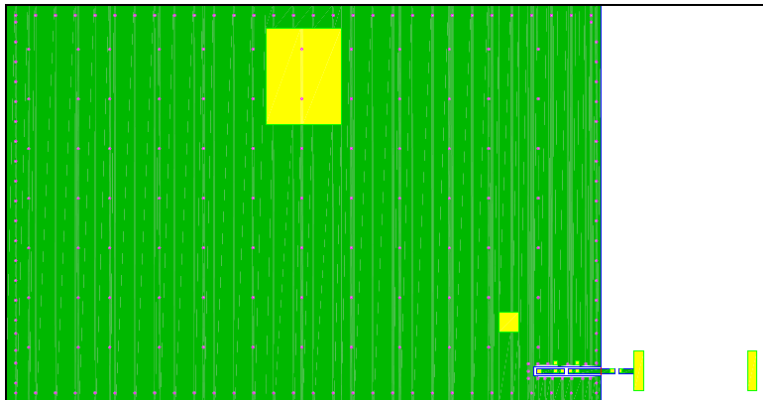
No.	Terminal Name
1	Feeding
2	Soldering

Evaluation Board Reference

PCB Dimension



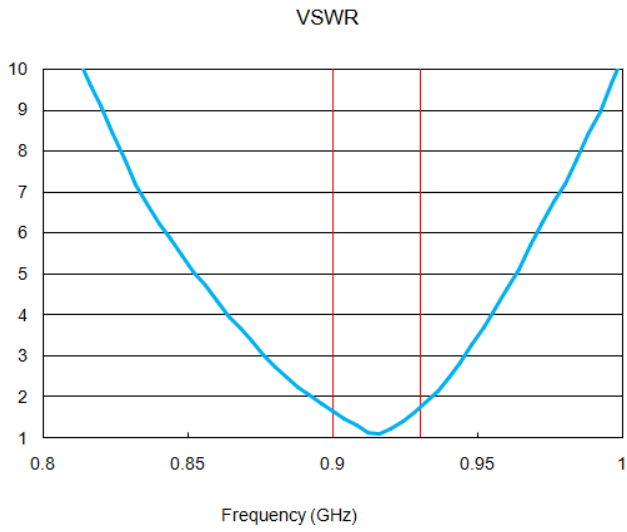
Antenna Layout Reference



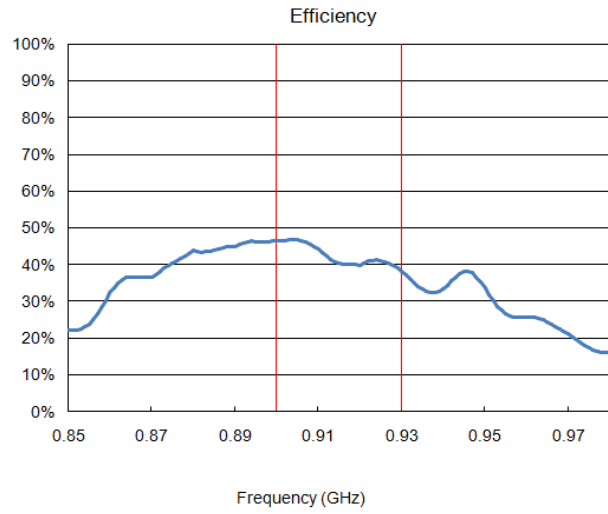
Electrical Characteristics

Return Loss & Radiation

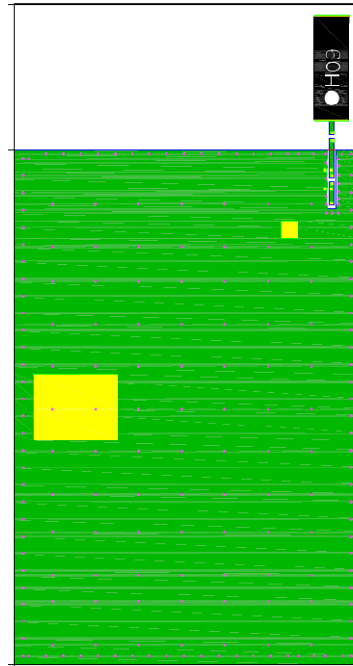
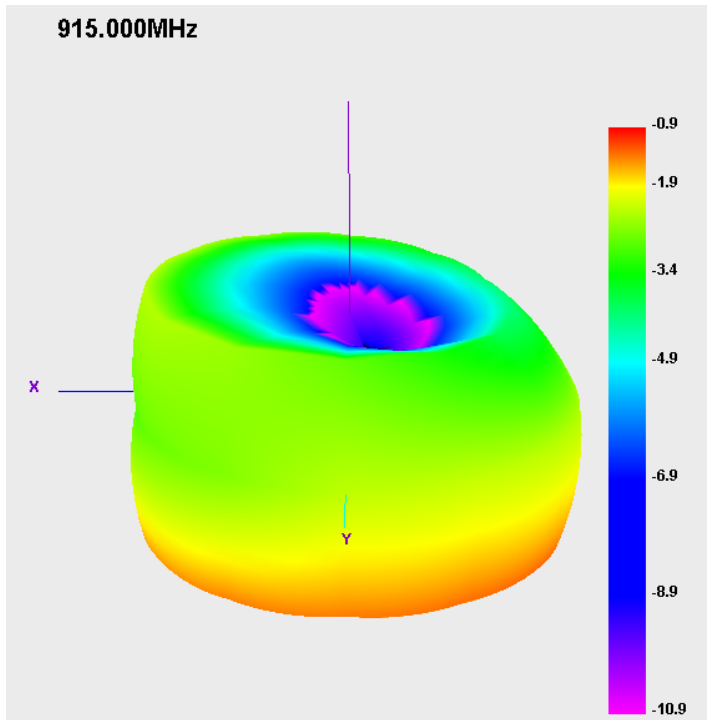
VSWR



Efficiency



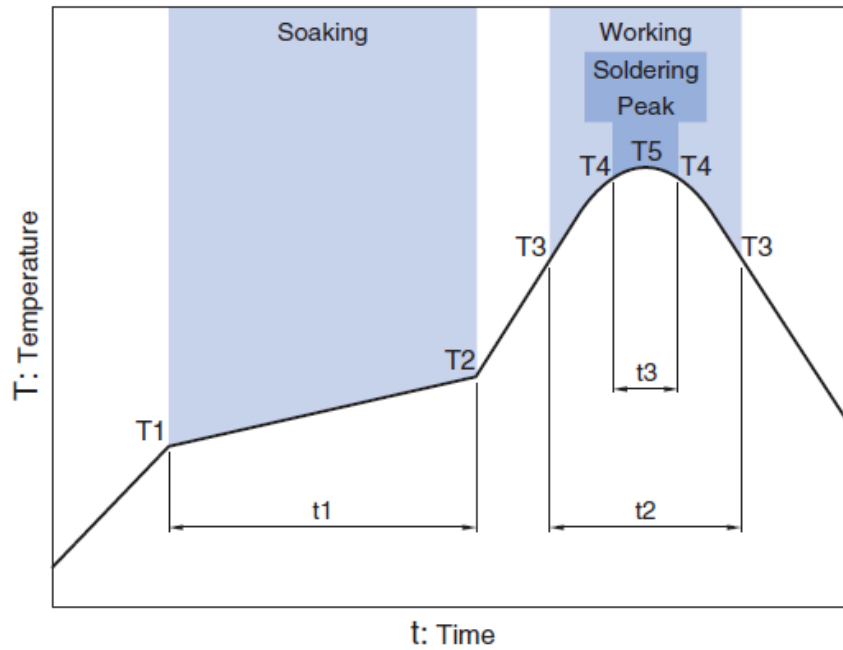
Radiation _ 868MHz



915MHz 1204 Chip Antenna: ANT1204R09151KM1

Recommended Reflow Profile

Pb free solder



Soaking		Working		Soldering		Peak	
Temp.	Time	Temp.	Time	Temp.	Time	Temp.	
T1	T2	t1	T3	t2	T4	t3	T5
150°C	180°C	60 to 120sec	230°C	more than 30sec	247 to 253°C	within 10sec	260°C Max.

March 2021Ver.H01