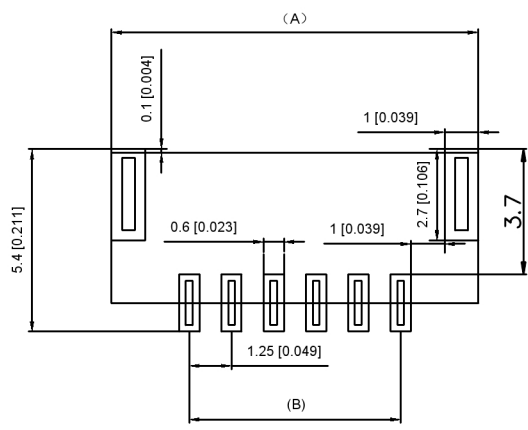
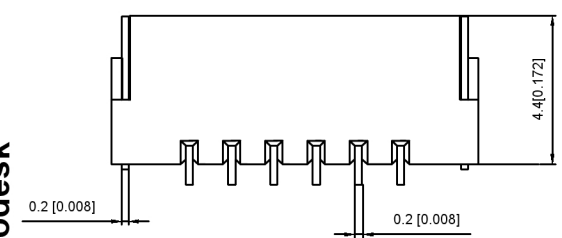


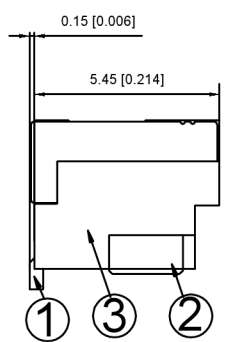
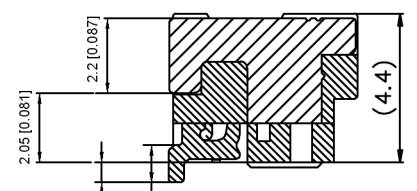
Specifications:  
 规格:  
 Voltage rating:50V AC/DC  
 额定电压: 50V AC/DC  
 Current rating:1A AC/DC  
 额定电流: 1A AC/DC  
 Contact Resistance:≤20MΩ  
 接触电阻: ≤20MΩ  
 Insulation Resistance:≥100MΩ  
 绝缘电阻:≥100MΩ  
 Dielectric strength:250V AC/minute  
 耐压: 250V AC/minute  
 Plug-in force: ≤3N(per pin)  
 插入力: ≤3N (per pin)  
 Plug-out force:≥0.3N (per pin)



PCB LAYOUT

X1254W R S -XX-LP SW  
 ① ② ③ ④ ⑤ ⑥ ⑦

- ⊙ Series No
- ⊙ Category:W-WAFER
- ⊙ Welding Board Angle:R-90°
- ⊙ Welding Way:S-SMT
- ⊙ Row No-Pin No:XX-02-07PIN
- ⊙ Material:LP-LCP 94V-0
- ⊙ Plating Category:SW-Matte Tin Plating(Tin:70u Min)



Circuits	Dinansin mm		Circuits	Dinansin mm	
	A	B		A	B
2	5.58	5.6	6	10.85	6.25
3	7.10	6.85	7	12.10	7.5
4	8.35	8.10			
5	9.6	9.35			

X1254WRS-XX-LPSW	LCP UL 94V-0	Brass	Tin -Pated	X1254W
PART NO	Material	Material(pin)	Finish(Pin)	Suitable XKB Terminal

广东墨神科技股份有限公司

生 效 日期

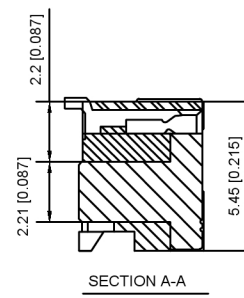
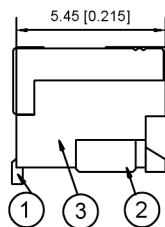
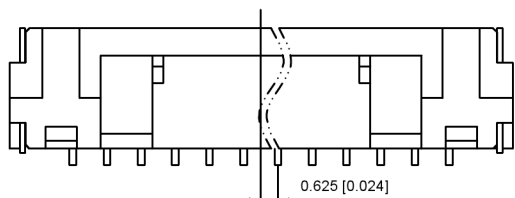
文件工程章

SECTION A-A

DSND		DATE		SCALE: N/A	MODEL TYPE: Wire to board connector
DWN		DATE		VIEW:	PART NO.: 1.25mm Crimp Style Connectors
CHKD		DATE		UNIT: mm/in	DWG NO.: X1254WRS-XX-LPSW
APPD		DATE		SIZE: A4	
XKB INDUSTRIAL PRECISION CO.,LIMITED				WEIGHT	SHEET
					REVISION
					1/1
					A0

MARK	DESCRIPTION	DATE	REVISED	APPROVED	UNSPECIFIED TOLERANCES

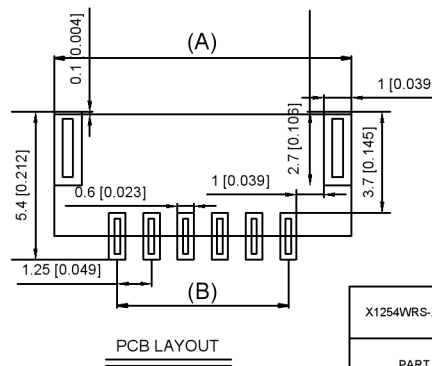
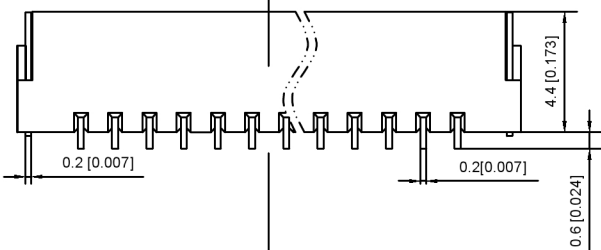
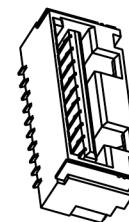
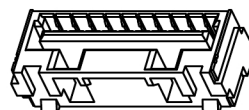
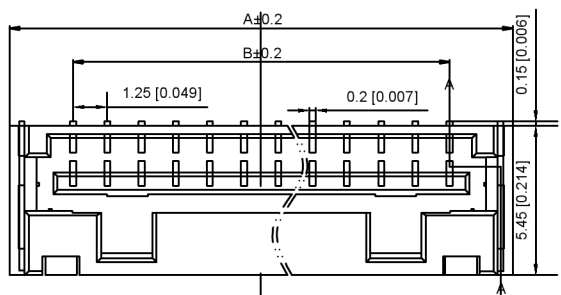
units: mm  
 tolerance:  
 X.X ±0.2mm  
 X.XX ±0.1mm  
 X.XXX ±0.05mm



Specifications:  
 规格:  
 Voltage rating:50V AC/DC  
 额定电压: 50V AC/DC  
 Current rating:1A AC/DC  
 额定电流: 1A AC/DC  
 Contact Resistance:≤20MΩ  
 接触电阻: ≤20MΩ  
 Insulation Resistance:≥100MΩ  
 绝缘电阻:≥100MΩ  
 Dielectric strength:250V AC/minute  
 耐压: 250V AC/minute  
 Plug-in force: ≤3N(per pin)  
 插入力: ≤3N (per pin)  
 Plug-out force:≥0.3N (per pin)  
 拔出力: ≥0.3N (per pin)  
 Finish: TIN Bronze, Tin plated  
 Brass, Tin plated

X1254W R S -XX-LP SW  
 ① ② ③ ④ ⑤ ⑥ ⑦

- ① Series No
- ② Category:W-WAFER
- ③ Welding Board Angle:R-90°
- ④ Welding Way: S-SMT
- ⑤ Row No-Pin No:XX-02-07PIN
- ⑥ Material:LP-LCP 94V-0
- ⑦ Plating Category:SW-Matte Tin Plating(Tin:70u Min)



Circuits	Dinansin mm		Circuits	Dinansin mm	
	A	B		A	B
8	13.35	8.75	12	18.35	13.75
9	14.60	10.00	13	19.60	15.00
10	15.85	11.25	14	20.85	16.25
11	17.10	12.50	15	22.10	17.50

X1254WRS-XX-LPSW	LCP UL 94V-0	Tin-Plated	Tin-Plated	X1254H
PART NO	Material	Material(pin)	Finish(Pin)	Suitable XKB Terminal

广东星坤科技股份有限公司

生效 MARK 日期

文件工程章

DESCRIPTION	DATE	REVISED	APPROVED	UNSPECIFIED TOLERANCES

DSND		DATE		SCALE: N/A	MODEL TYPE: Wire to board connector
DWN		DATE		VIEW:	PART NO.: 1.25mm Crimp Style Connectors
CHKD		DATE		UNIT: mm/in	DWG NO.: X1254WRS-XX-LPSW
APPD		DATE		SIZE: A4	
XKB INDUSTRIAL PRECISION CO., LIMITED					WEIGHT SHEET REVISION 1/1 A0

www.xk-dg.cn www.helloxkb.com www.helloxkb.cn