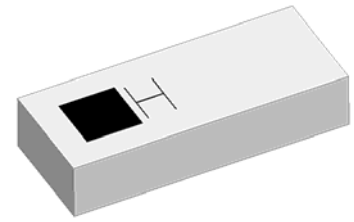


2.4GHz 5020 Chip Antenna: ANT5020R24001KL1

Application:

WLAN, 802.11b/g, Bluetooth, etc...



Features

SMD, high reliability, ultra compact, Omni-directional...

Part number

ANT 5020 R 2400 1K L1
 (1) (2) (3) (4) (5)

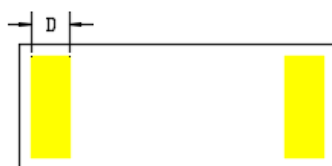
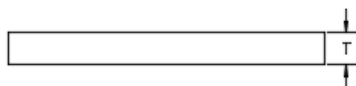
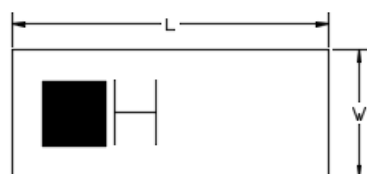
(1) Size Code	5.0x2.0mm
(2) Packing	Tape and reel
(3) Frequency	2.4GHz
(4) Packing Number	1K
(5) Code	L1

Electrical Specification

Working Frequency Range	2400 ~2.484 MHz
Peak Gain	3.3 dBi (Typ.)
Impedance	50 Ohm
VSWR	2.5 (Max)
Polarization	Linear
Azimuth Beamwidth	Omni-directional
Operation Temperature(°C)	-40 ~85°C

The specification is defined on HEK EVB.

Dimension and Terminal Configuration



(1)

(2)

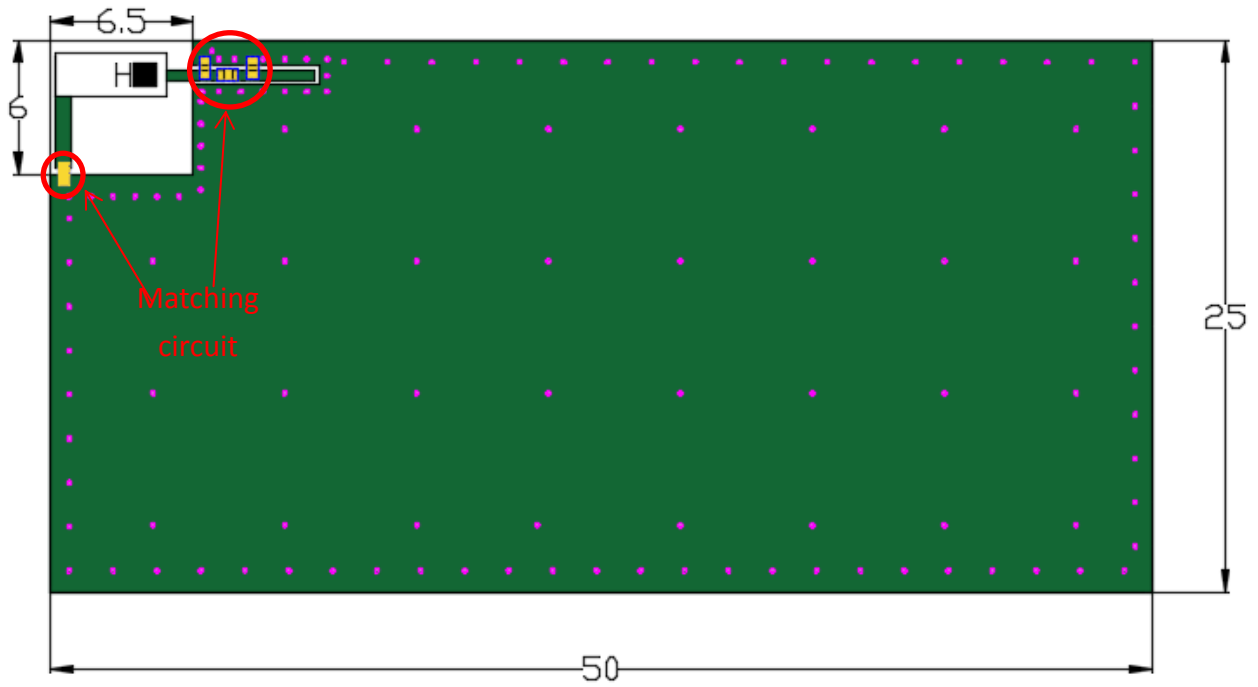
Dimension (mm)	
L	5.0±0.15
W	2.0±0.15
T	1.0±0.10
D	0.6±0.15

No.	Terminal Name
1	Feeding
2	Ground

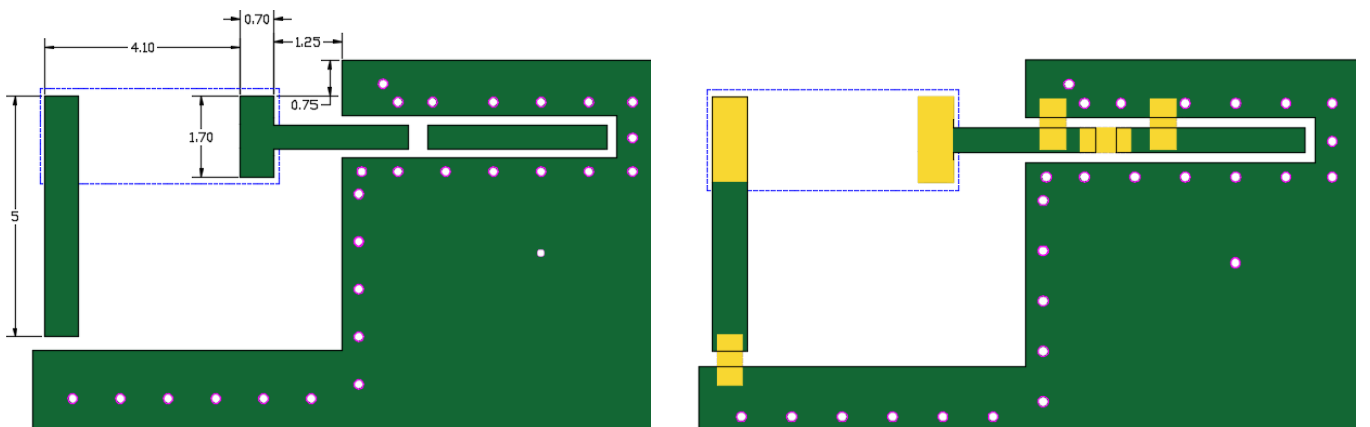
2.4GHz 5020 Chip Antenna: ANT5020R24001KL1

Evaluation Board Reference



PCB Dimension



Antenna Layout Reference



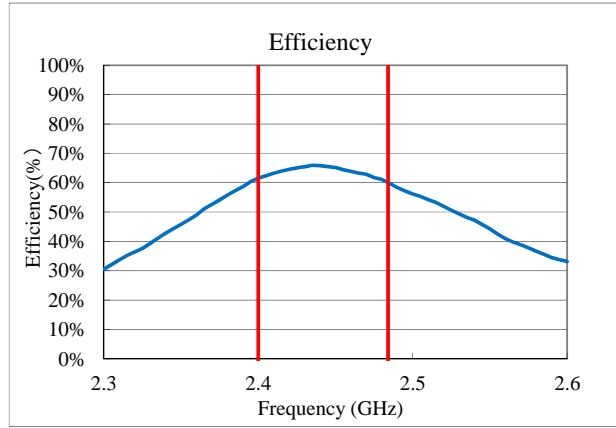
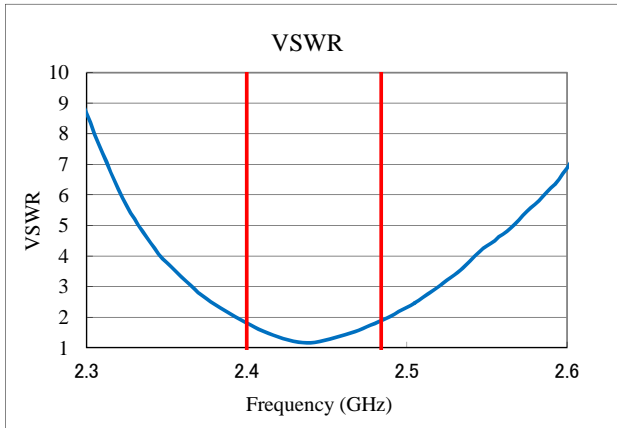
Unit : mm

 : Chip Antenna
 : Land Pattern

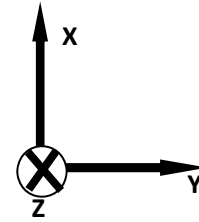
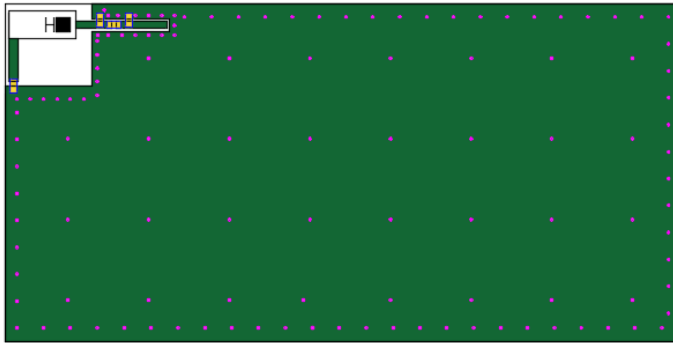
2.4GHz 5020 Chip Antenna: ANT5020R24001KL1

Electrical Characteristics

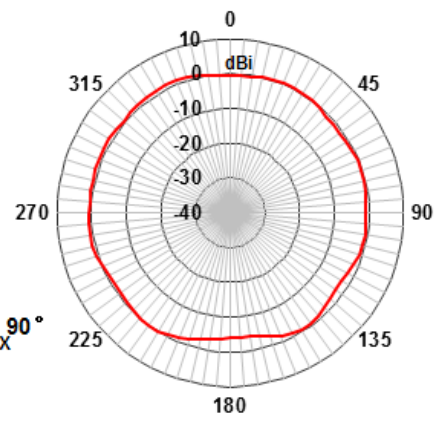
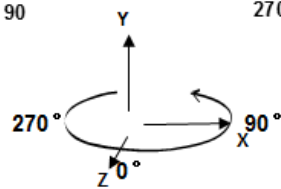
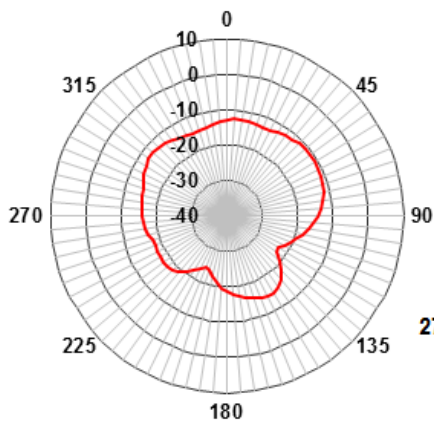
VSWR&Efficiency



Radiation Pattern

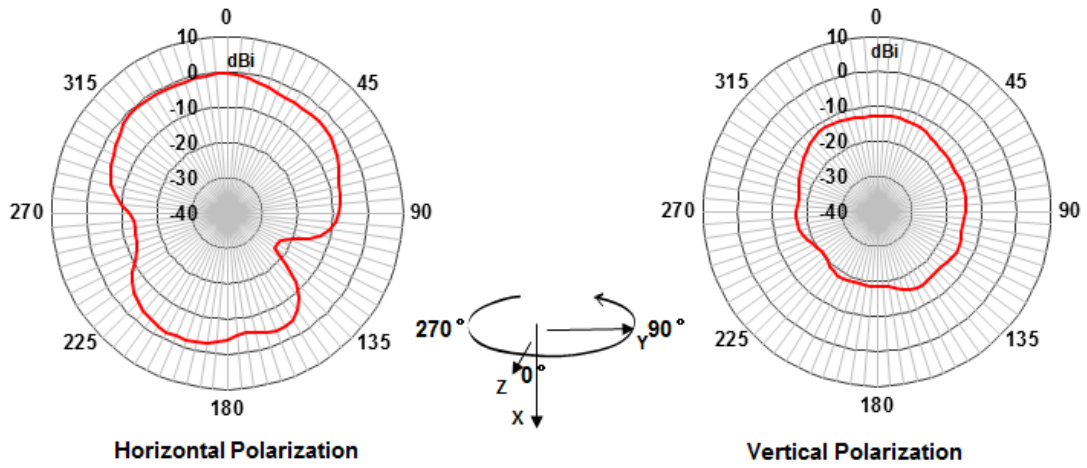


ZX-Plane

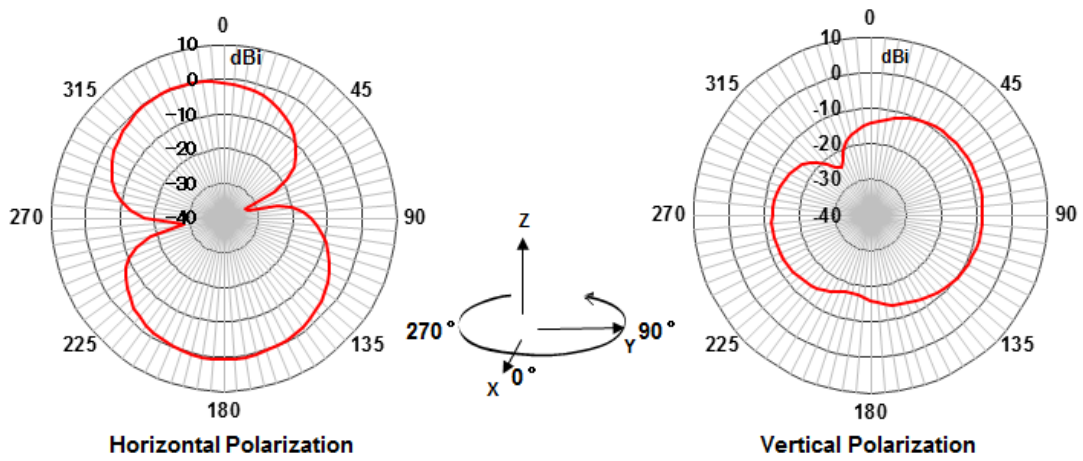


2.4GHz 5020 Chip Antenna: ANT5020R24001KL1

ZY-Plane



XY-Plane

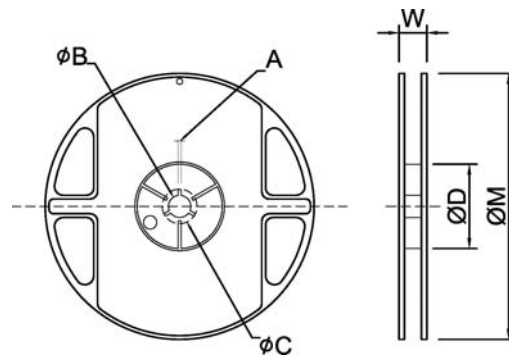


2.4GHz 5020 Chip Antenna: ANT5020R24001KL1

Taping Specifications

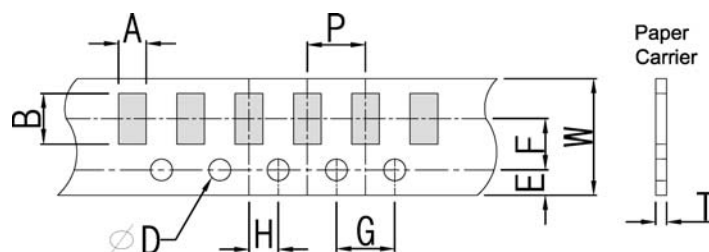
Reel and Taping Specification

Reel Specification



TYPE	SIZE	A	ϕB	ϕC	ϕD	W	ϕM	
5020	7"	1K/Reel	2.0±0.5	13.0±1.0	21±1.0	67±1.0	16.5±2.0	178±2.0

Taping Specification

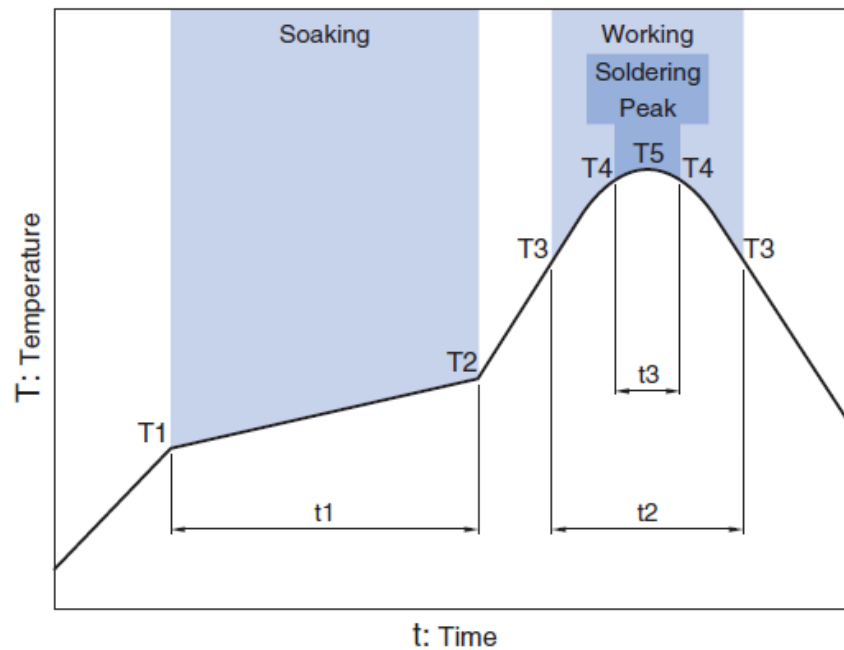


Packaging	Type	A	B	W	E	F	G	H	T	ϕD	P
Paper Type	5020	2.30±0.20	5.30±0.20	12.0±0.20	1.75±0.10	5.5±0.05	4.0±0.10	2.0±0.05	0.30±0.10	1.50 +0.10 -0	10±0.1

2.4GHz 5020 Chip Antenna: ANT5020R24001KL1

Recommended Reflow Profile

Pb free solder



Soaking		Working		Soldering		Peak	
Temp.	Time	Temp.	Time	Temp.	Time	Temp.	
T1	T2	t1	T3	t2	T4	t3	T5
150°C	180°C	60 to 120sec	230°C	more than 30sec	247 to 253°C	within 10sec	260°C Max.

March 2018 Ver.H01