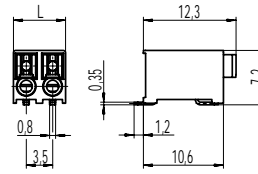


830-A-111-SMD

PCB connector for SMD
Push-In connection



GENERAL INFORMATION

| | |
|----------------------|------------------------------|
| Pitch | 3,5 mm |
| No. of poles | 2 + 3 |
| Areas of application | Lighting technology, devices |

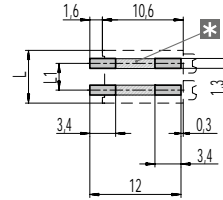
TECHNICAL DATA

| | | | |
|--------------------------|--|--------|--------|
| Clamping Range | solid / stranded / AWG 0,2 - 1,0 mm ² / 0,2 - 0,75 mm ² / 24 - 18 AWG | | |
| Rated Cross Section | 1 mm ² (starr / solid) / 0,75 mm ² | | |
| Wire Stripping Length | 7,5 mm ± 0,5 mm | | |
| Overvoltage Category | III | III | II |
| Pollution Severity Level | 3 | 2 | 2 |
| Rated Voltage | 160 V | 160 V | 320 V |
| Rated Impulse Voltage | 2,5 kV | 2,5 kV | 2,5 kV |
| Rated Insulation Voltage | 130 V acc. to EN 60998-1 | | |
| Rated Current | 13,5 A apply to 1 mm ² solid 9 A apply to 0,75 mm ² | | |
| Soldering process | Reflow solder | | |

APPROVALS

| | Current [A] | Voltage [V] | Group | AWG | [Nm] |
|--|-------------|-------------|-------|---------|------|
| | 6 | 300 | B | 24 - 18 | |

PCB LAYOUT (RECOMMENDATION)



L = (No. of poles) x pitch
L1 = (No. of poles - 1) x pitch
Solder paste thickness:
0,15 - 0,2 mm

* Both solder pads of each pole can be connected together.

MATERIAL

| | |
|----------------------------|---|
| Moulding | PA HT, white, V-0 |
| Comparative Tracking Index | CTI ≥ 600 |
| Insulating Group | I |
| Temperature Range | -40°C up to 120°C; reflow solder temperature peak max. 255°C acc. to DIN EN 61760-1 |
| Terminal body | Tin plated copper alloy |
| Spring | Stainless steel |

OPTIONS / ACCESSORIES

- Consecutive numbering
- Special marking according to drawing
- Black colour on request

CONFIGURATIONS

| Poles | Part number | Article number | Length (L) | Packaging | PU | Tape Width | Tape Height |
|-------|----------------------|----------------|------------|--------------|------|------------|-------------|
| 2 | 830-A-111-SMD/02 | 10.813.002 | 6,90 mm | Box | 3626 | | |
| 3 | 830-A-111-SMD/03 | 10.813.003 | 10,40 mm | Box | 2401 | | |
| 2 | 830-A-111-SMD/02-T&R | 10.813.002.A00 | 6,90 mm | Tape-on-Reel | 550 | 24 mm | 8,4 mm |
| 3 | 830-A-111-SMD/03-T&R | 10.813.003.A00 | 10,40 mm | Tape-on-Reel | 550 | 24 mm | 8,4 mm |

