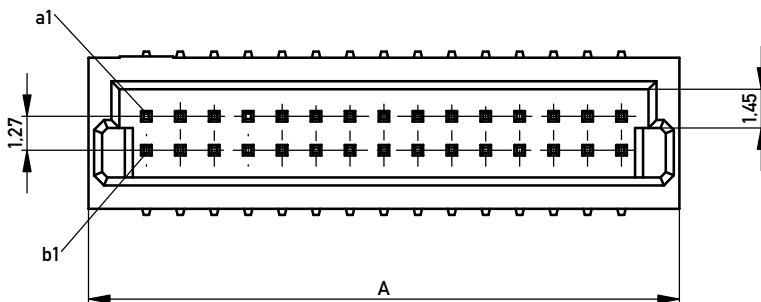
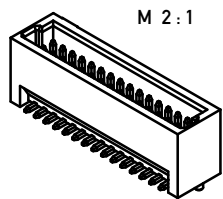
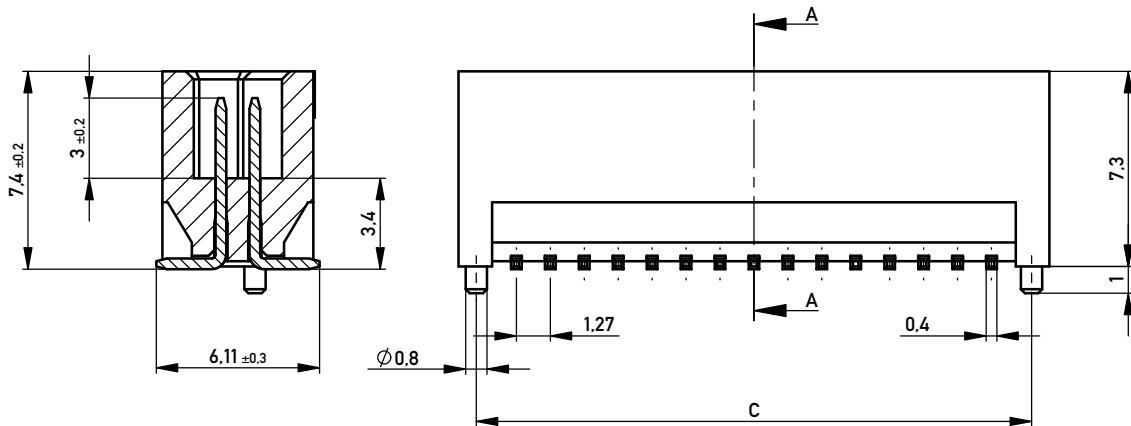
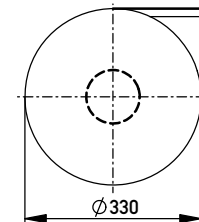


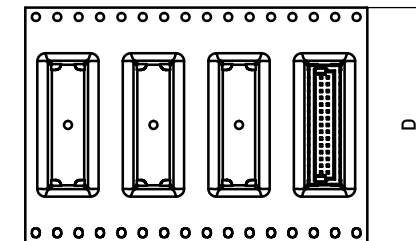
SCHNITT A-A



Verpackt in Gurtverpackung
Tape on Reel Packaging
Verpackungseinheit: 350 Stück
Packaging unit: 350pcs



Abspulrichtung - Reel off Direction

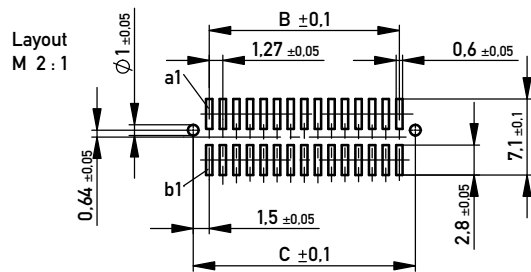


Verpackung Stange / Stange & Ansaughaube
packaging tube / tube & cap

| | |
|-----------------------------|----------------|
| 100 | 9 |
| 80 | 11 |
| 70 | 12 |
| 60 | 14 |
| 50 | 17 |
| 40 | 21 |
| 30 | 27 |
| 20 | 38 |
| 10 | 64 |
| Polzahl No. of positions | Stück / pieces |

Masse und Toleranzen in Übereinstimmung mit ANSI Y15.5M-1994 / Interpret dimensions according to ANSI Y15.5M-1994

| | | | | | | | | | | |
|--|---|---|--|---|--|----------------------------|--------|--------|--------|--------|
| 109109 | 109100 | 109091 | 109082 | 109073 | 109064 | 100 | 66.56 | 62.23 | 65.23 | 88 |
| 109108 | 109099 | 109090 | 109081 | 109072 | 109063 | 80 | 53.86 | 49.53 | 52.53 | 72 |
| 109107 | 109098 | 109089 | 109080 | 109071 | 109062 | 70 | 47.51 | 43.18 | 46.18 | 72 |
| 109106 | 109097 | 109088 | 109079 | 109070 | 109061 | 60 | 41.16 | 36.83 | 39.83 | 56 |
| 109105 | 109096 | 109087 | 109078 | 109069 | 109060 | 50 | 34.81 | 30.48 | 33.48 | 56 |
| 109104 | 109095 | 109086 | 109077 | 109068 | 109059 | 40 | 28.46 | 24.13 | 27.13 | 44 |
| 109103 | 109094 | 109085 | 109076 | 109067 | 109058 | 30 | 22.11 | 17.78 | 20.78 | 44 |
| 109102 | 109093 | 109084 | 109075 | 109066 | 109057 | 20 | 15.76 | 11.43 | 14.43 | 32 |
| 109101 | 109092 | 109083 | 109074 | 109065 | 109056 | 10 | 9.41 | 5.08 | 8.08 | 24 |
| Id-Nr. tape&reel 100 mating- cycles | Id-Nr. tape&reel 10 mating- cycles | Id-Nr. tube&cap 100 mating- cycles | Id-Nr. tube&cap 10 mating- cycles | Id-Nr. tube 100 mating- cycles | Id-Nr. tube 10 mating- cycles | Polzahl no of positions | Mass A | Mass B | Mass C | Mass D |



Bei Gurtverpackung ist Ansaughaube immer montiert.
Tape & reel packaging is always with assembly cap.

Copyright by ERNI GmbH
Proprietary notice pursuant to ISO 9006 to be observed.

| | | |
|--|----------------------|---|
| Information: | Tolerances | Scale 5:1 |
| All rights reserved. Only for Information. To ensure that this is the latest version of this drawing, please contact one of the ERNI companies before using. | All Dimensions in mm | Designation |
| | | |
| www.ERNI.com | | MiniMez Vertical Male SMT with locating pegs 3,4mm 109055 |
| Index | Date | Class MINIMEZ |