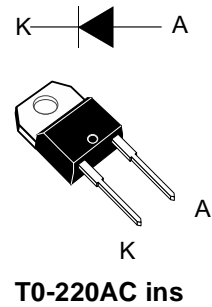


Features

- High Speed Switching, $t_{rr} < 28\text{ns}$ at rating current
- High Reverse Voltage and High Reliability
- Max Forward Voltage, $V_F < 2.0\text{V}$ @25°C
- Insulated voltage, 2500V DC

Applications

- Boost diode in continuous mode power factor corrections



Absolute Maximum Ratings $T_C = 25^\circ\text{C}$ unless otherwise noted

| Symbol | Parameter | Ratings | Units |
|----------------|---|-------------|-------|
| V_{RRM} | Peak Repetitive Reverse Voltage | 600 | V |
| V_{RWM} | Working Peak Reverse Voltage | 600 | V |
| V_R | DC Blocking Voltage | 600 | V |
| $I_{F(AV)}$ | Average Rectified Forward Current @ $T_C = 115^\circ\text{C}$ | 10 | A |
| I_{FSM} | Non-repetitive Peak Surge Current 60Hz Single Half-Sine Wave | 90 | A |
| T_J, T_{STG} | Operating and Storage Temperature Range | -65 to +150 | °C |

Thermal Characteristics

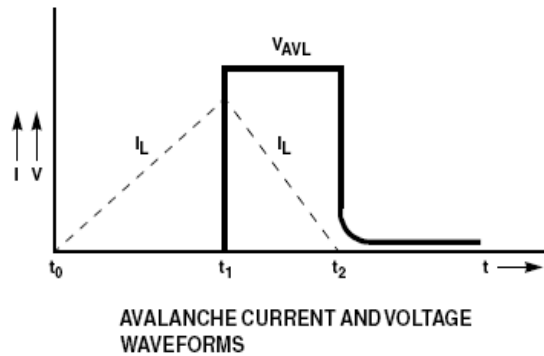
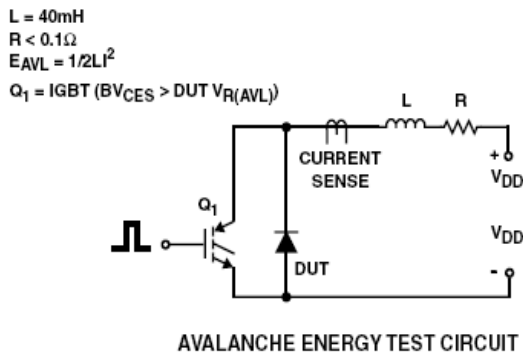
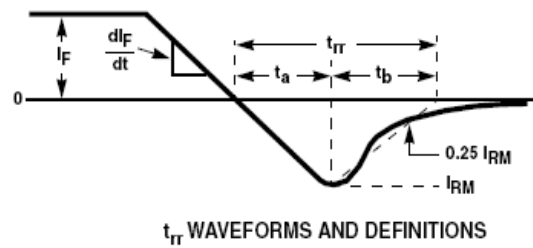
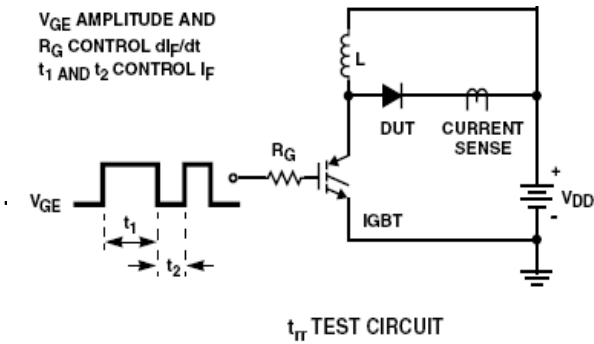
| Symbol | Parameter | Ratings | Units |
|-----------------|--|---------|-------|
| $R_{\theta JC}$ | Maximum Thermal Resistance, Junction to Case | 2.0 | °C/W |

Electrical Characteristics $T_C = 25^\circ\text{C}$ unless otherwise noted

| Symbol | Parameter | Min. | Typ. | Max. | Units |
|-----------|--|------|------------|-----------|---------------|
| V_{FM1} | $I_F = 10\text{A}$ $I_F = 10\text{A}$ | - | 1.8 1.5 | | V |
| I_{RM1} | $V_R = 600\text{V}$ $V_R = 600\text{V}$ | - | - | 10 100 | μA |
| t_{rr} | $I_F = 10\text{A}$, $di/dt = 200\text{A}/\mu\text{s}$, $V_R = 390\text{V}$ | - | 28 25 | | ns |
| W_{AVL} | Avalanche Energy ($L = 40\text{mH}$) | 20 | - | - | mJ |

Notes:

1: Pulse: Test Pulse width = $300\mu\text{s}$, Duty Cycle = 2%



Typical Performance Characteristics

Figure 1. Typical Forward Voltage Drop vs. Forward Current

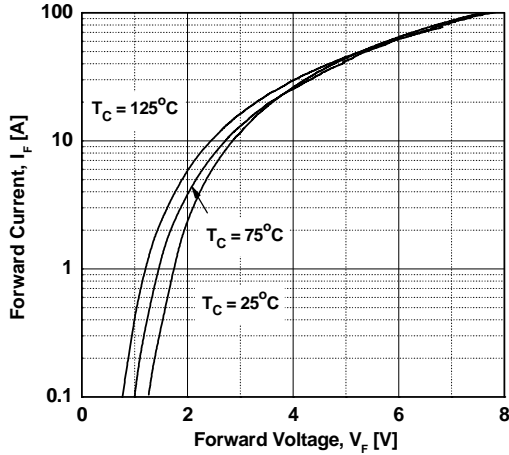


Figure 3. Typical Junction Capacitance

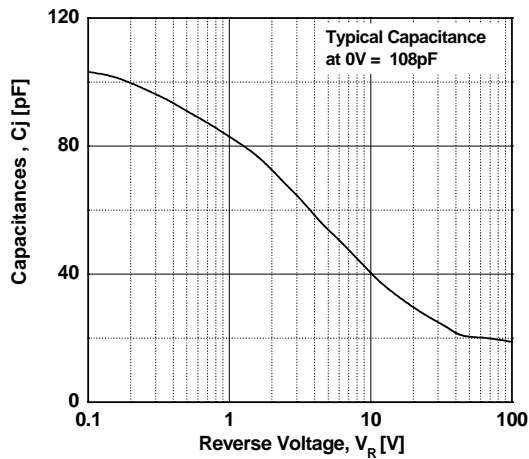


Figure 5. Typical Reverse Recovery Current vs. di/dt

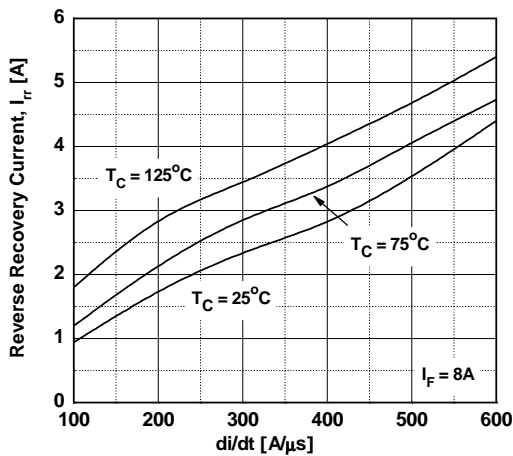


Figure 2. Typical Reverse Current vs. Reverse Voltage

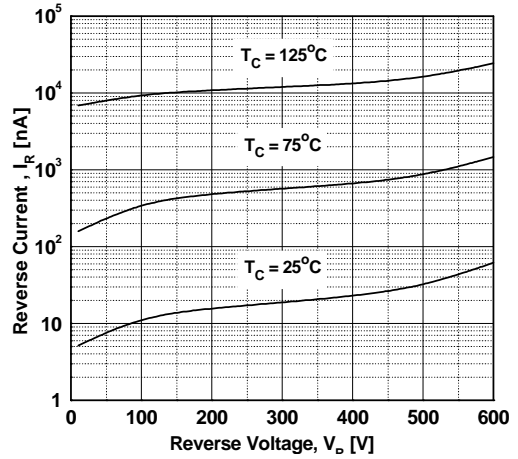


Figure 4. Typical Reverse Recovery Time vs. di/dt

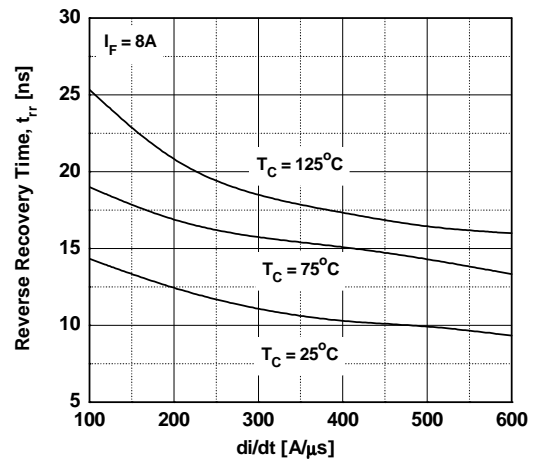
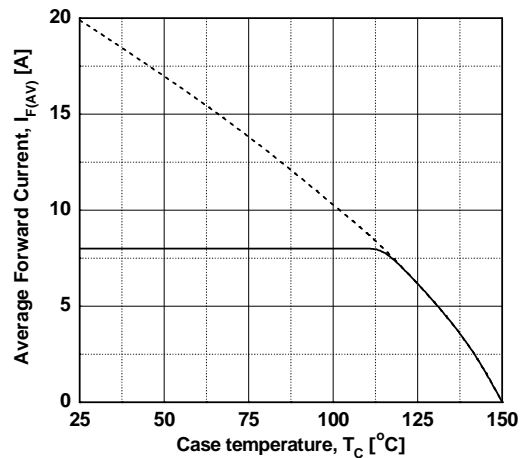
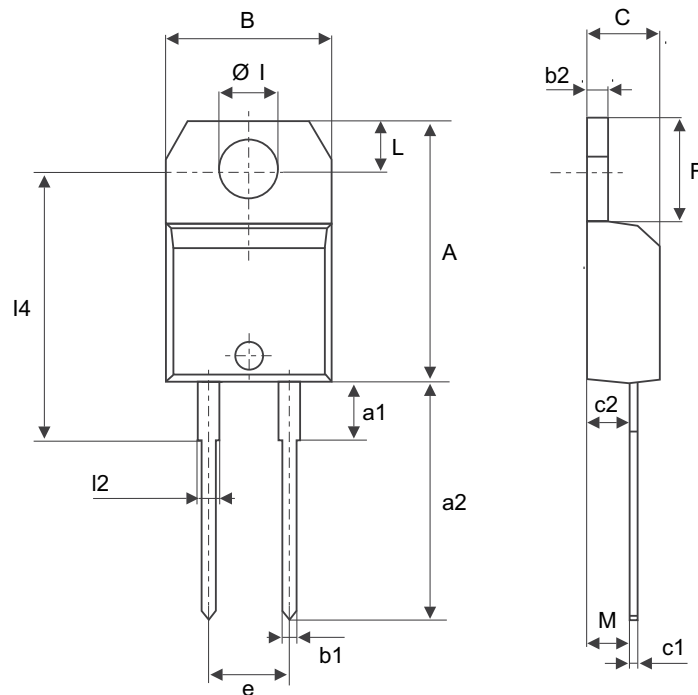


Figure 6. Forward Current Derating Curve



T0-220AC ins. package outline



| Ref. | Dimensions | | | | | |
|-----------------|-------------|-------|-------|--------|-------|-------|
| | Millimeters | | | Inches | | |
| | Min. | Typ. | Max. | Min. | Typ. | Max. |
| A | 15.20 | | 15.90 | 0.598 | | 0.625 |
| a1 | | 3.75 | | | 0.147 | |
| a2 | 13.00 | | 14.00 | 0.511 | | 0.551 |
| B | 10.00 | | 10.40 | 0.393 | | 0.409 |
| b1 | 0.61 | | 0.88 | 0.024 | | 0.034 |
| b2 | 1.23 | | 1.32 | 0.048 | | 0.051 |
| C | 4.40 | | 4.60 | 0.173 | | 0.181 |
| c1 | 0.49 | | 0.70 | 0.019 | | 0.027 |
| c2 | 2.40 | | 2.72 | 0.094 | | 0.107 |
| e | 4.80 | | 5.40 | 0.189 | | 0.212 |
| F | 6.20 | | 6.60 | 0.244 | | 0.259 |
| $\varnothing I$ | 3.75 | | 3.85 | 0.147 | | 0.151 |
| l4 | 15.80 | 16.40 | 16.80 | 0.622 | 0.646 | 0.661 |
| L | 2.65 | | 2.95 | 0.104 | | 0.116 |
| l2 | 1.14 | | 1.70 | 0.044 | | 0.066 |
| M | | 2.60 | | | 0.102 | |