

SPECIFICATIONS

Modular Jack

Mechanical

Mating Force: 5.0Pounds max.(RJ45) 7.7Pounds max.(USB)
Unmating Force: 10Pounds max.(RJ45) 2.2Pounds min.(USB)
Durability: 1000 Cycles(RJ45) 1500 Cycles(USB)

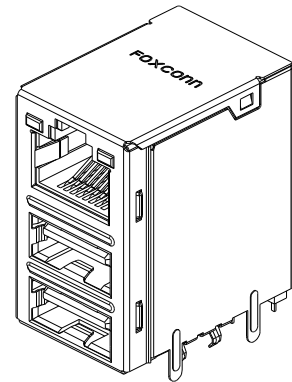
Electrical

Current Rating: 1.5A max.(RJ45) 1.0A(USB)
Dielectric Withstanding Voltage: 1000V(RJ45) 750V(USB)

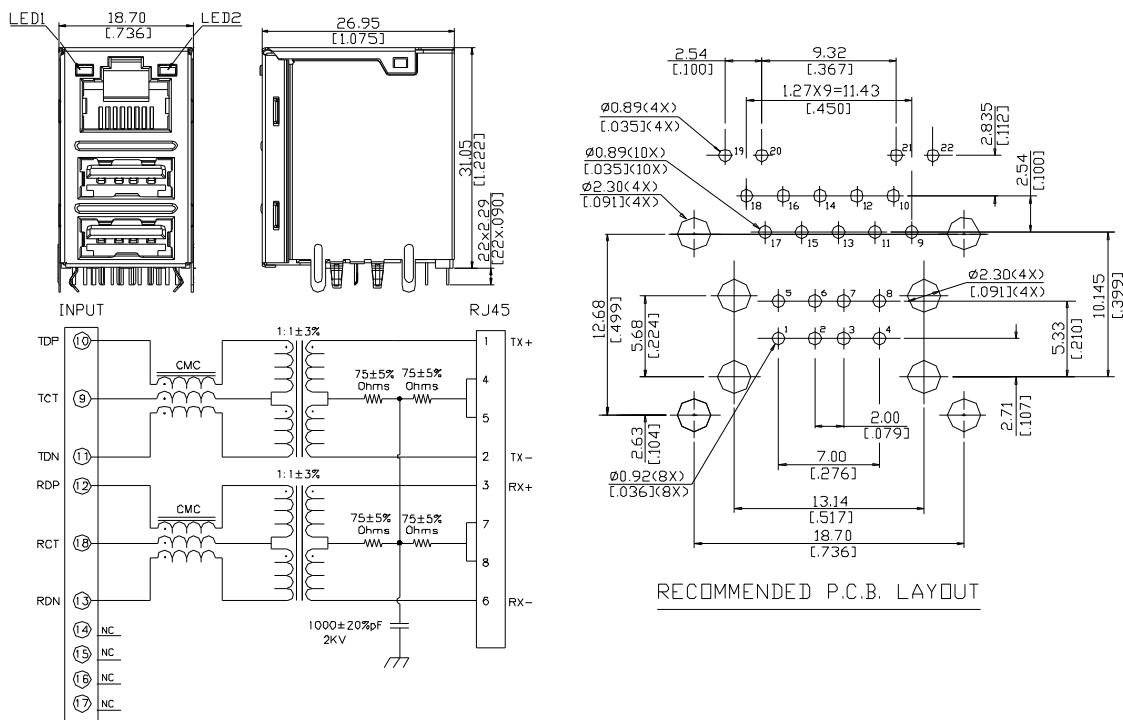
Physical

Housing: Thermoplastic, UL 94V-0 rated in Black Color
Contact: Copper Alloy
Shell: Stainless Steel, Copper Alloy
Operating Temperature: -30 to +85

JFM Series
RJ45 Over Dual USB
R/A, T/H Type
1.27mm [.050"] Pitch
10/100 Base-T



DRAWING



ORDERING INFORMATION

PRODUCT NO.: JFM 2 4 U 1 * - 21C3 - 4 *

RJ With Magnetic: _____
 Protocol Type: _____
 2=10/100 Base T
 Core Count: _____
 4=4 Core
 Configuration: _____
 U=Combo USB
 PCB Attach Method: _____
 1= Solder Tail

Material Of Plating:
 N: Sn/Pb
 F: Lead Free
 4: Soft Tray

Extension Code

LEDs
 (See Sheet)

JFM24U1K-21C3-4*	19 ORANGE	20	21 GREEN	22
JFM24U1J-21C3-4*	19 GREEN	20	21 GREEN	22
JFM24U1H-21C3-4*	19 ORANGE	20	21 GREEN	22
JFM24U1G-21C3-4*	19 YELLOW	20	21 GREEN	22
JFM24U1F-21C3-4*	19 GREEN	20	21 ORANGE	22
JFM24U1B-21C3-4*	19 GREEN	20	21 YELLOW	22
JFM24U1A-21C3-4*	19 GREEN	20	21 GREEN	22
JFM24U14-21C3-4*	19 YELLOW	20	21 YELLOW	22
JFM24U13-21C3-4*	19 GREEN	20	21 YELLOW	22
JFM24U12-21C3-4*	19 GREEN	20	21 GREEN	22
JFM24U11-21C3-4*	19 YELLOW	20	21 GREEN	22
JFM24U10-21C3-4*	NONE	NONE	NONE	NONE
PART NO.	LED1		LED2	