

No: SR-2-019-02-A

App

Chk

Dwg

Date

Specification Sheet

Relay S4E-24B-1CS

1.Scope: This specification covers Relay S4E-24B-1CS
(It Includes specifications and drawings)

Approval Blank

Please sign & chop for the approval of the specification for the specified in this drawing.

SHORI Electric Co., Ltd

No: SR-2-019-02-A

Relay Model :S4E-24B-1CS 1060 Ohm

General Performance

1. Application :Microwave ovens, Facsimiles, Refrigerators, Air conditioners, Stero equipments, etc...

2.Safety Approval :UL&CUL&TUV

3.Contact Specification

3-1 Contact From :SPDT

3-2 Contact Material :Silver alloy

3-3 Carrying current :16A

3-4 Max. Allowable Current :20A

3-5 Allowable Voltage :380VAC,125VDC

3-6 Rated Load :16A 250VAC 16A 30VDC

4.Electrical Specification

(at 20 Degree Celsius)

4-1 Nominal Voltage :24VDC

4-2 Nominal Current :22.5mA

4-3 Pick Up Voltage :18VDC(75% of the Nominal Voltage Max)

4-4 Drop Out Voltage :1.2VDC(10% of the Nominal Voltage Min)

4-5 Maximum Applicable Voltage :31.2VDC

4-6 Coil Resistance :1060 Ohm+/- 10%

4-7 Operate Time :20ms

4-8 Release Time :10ms

4-9 Power Consumption :0.54W

5.Service Life

5-1 Electrical Service Life :100,000 Operations at rated load

5-2 Mechanical Service Life :20,000,000 Operations

6.Dielectric Strength

6-1 Between Coil and Contact :5000VAC for 1 Minute

6-2 Between Contact sets :2500VAC for 1 Minute.

6-3 Between open contacts :1000VAC for 1 Minute

7.Insulation Resistance :1000M Ω Min(DC 500V)

SHORI Electric Co., Ltd

No: SR-2-019-02-A

8.Contact resistance	:100m Ω Max.
9.Vibration	
9-1 Error Operational	:10 to 55 Hz Double Amplitude 1.5 mm
9-2 Endurance	:10 to 55 Hz Double Amplitude 1.5 mm
10.Shock resistance	
10-1 Destructive	:100G Min
10-2 Functional	:10 G Min
11.Ambient temperature	
11-1 Operating	:-40~ +70 $^{\circ}$ C
11-2 Storage	:-40~+70 $^{\circ}$ C
12.Humidity	:35 to 85%RH
13.Weight	:about 13g
14.Sample testing Method	:MIL-STD-105E Level General H
15.Part Number Arrangement,	AQL-0.4

S4E – 24B—1C S

(1) (2) (3)(4)

(1) Relay Model

(2) Coil Voltage

(DC: 5V, 6V, 9V, 12V, 24V, 48V)

(3) Contact arrangement

1C: SPDT

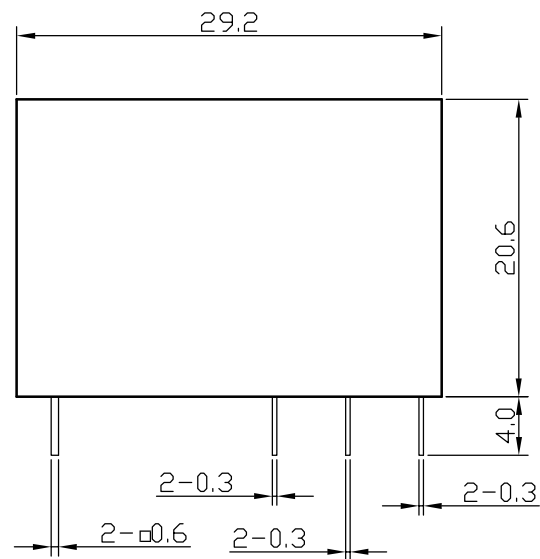
1A: SPNO

1B: SPNC

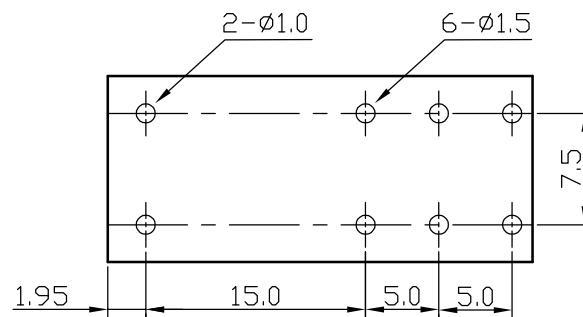
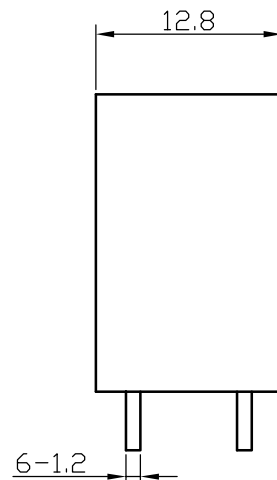
(4) S:Sealed type washable

Blank: Sealed type

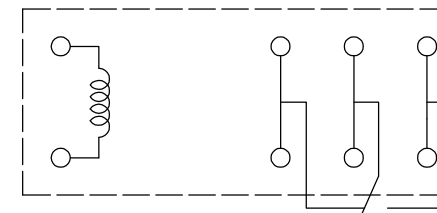
SHORI Electric Co., Ltd



Outline Dimensions



PC Board Layout



Wiring Diagram

注: 1. 未注公差尺寸
 <1mm : ±0.2mm
 1-5mm : ±0.3mm
 >5mm : ±0.4mm
 2. 安装孔尺寸公差 ±0.1mm

镀涂

版本					
第 1 版	更改标记	数量	更改单号	签名	日期
底图总号	设计				
	绘图				
	审核				
日期	签名				
		标准化			
		批注			

S4E-SPDT
脚位图

R0004-5

等级	标记	重量	比例
			2:1
第 1 张		共 1 张	
东莞胜力电子有限公司			