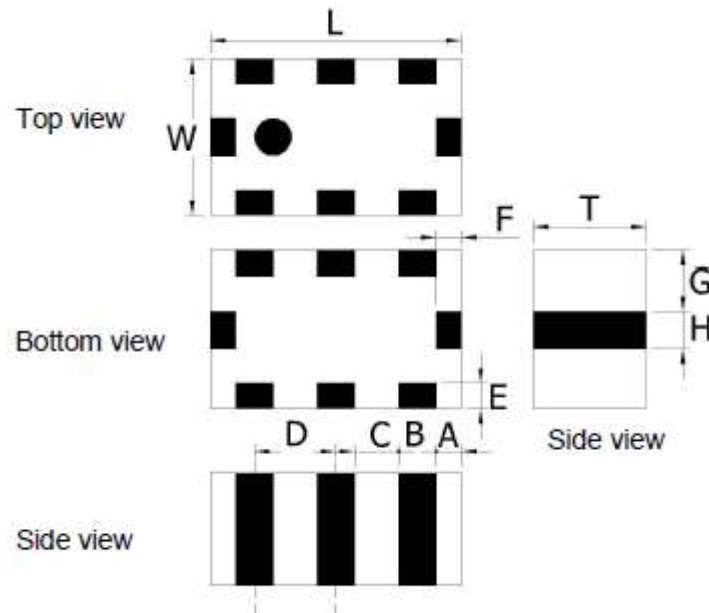


Parameters		Specification	Unit
Frequency Range		858.000 ~ 878.000	MHz
Insertion Loss at 25°C, max		0.5	dB
Return Loss, min		14	dB
Attenuation, min	@ 1716 ~ 1756 MHz	30	dB
	@ 2574 ~ 2634 MHz	40	dB
Impedance		50	Ω
Operating Temperature Range		-40°C to +85°C	°C
Storage Temperature Range		-40°C to +85°C	°C
MSL		1	-

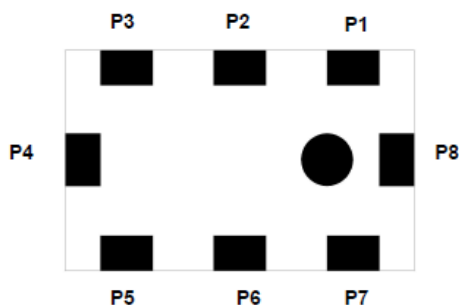
Dimensions



	L	W	T	A	B	C	D	E	F	G	H
Dimension	2.0±0.15	1.25 ± 0.15	0.95± 0.10	0.20 ± 0.15	0.30 ± 0.15	0.35 ± 0.15	0.65 ± 0.15	0.20 ± 0.15	0.20 ± 0.15	0.475± 0.15	0.30 ± 0.15

Unit: mm

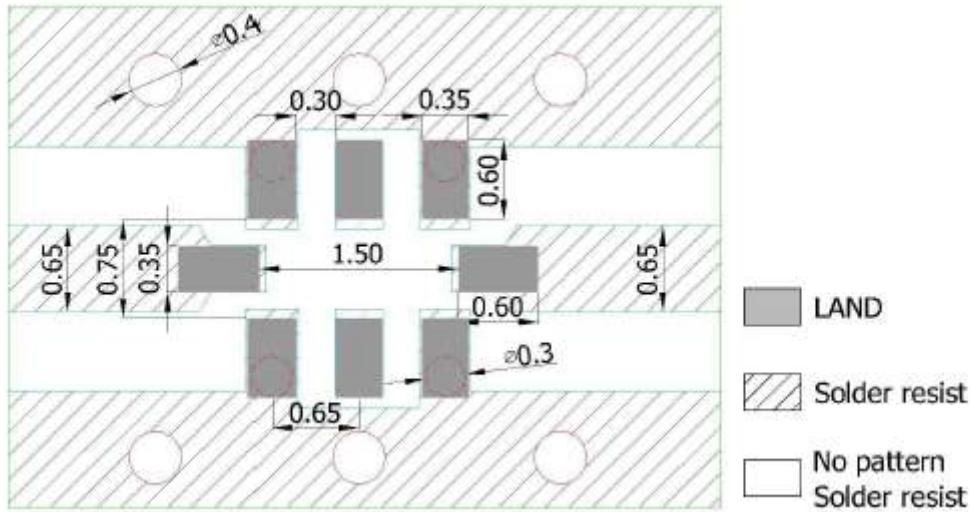
TOP VIEW



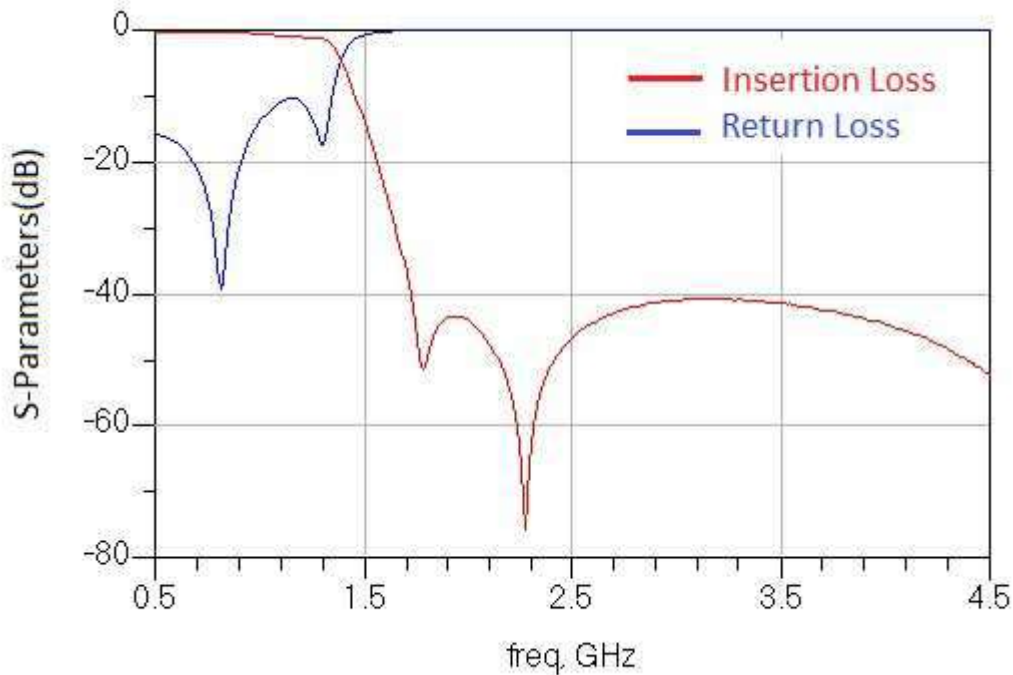
PIN CONNECTION

P1, P3, P5, P7	GND
P2, P6	NC
P4	OUTPUT
P8	INPUT

SOLDER PATTERN



Frequency Characteristics



● **APPROVAL**

DRAWN BY	LP, October 16, 2016
APPROVED BY	CP, October 16, 2016
REVISION	A, Initial Release