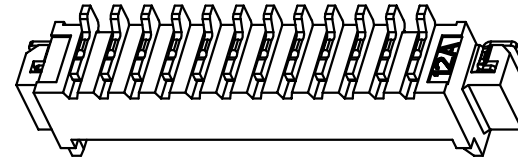
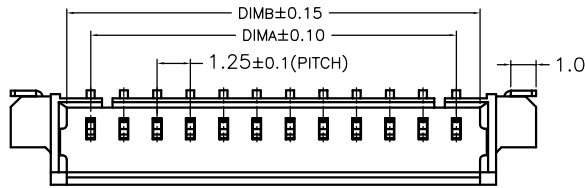
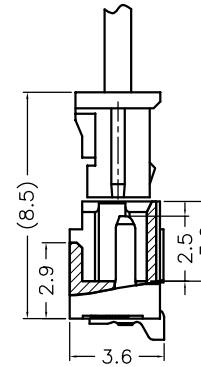
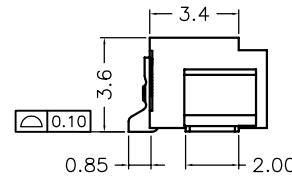
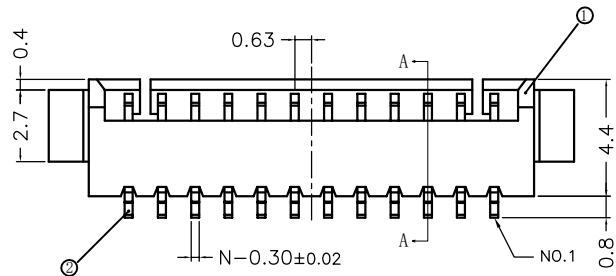


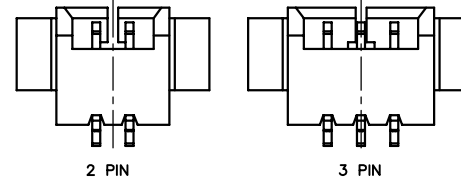
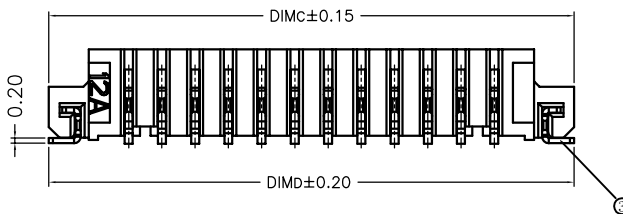
序号	品名	材质
①	1.25 A型卧式胶芯	LCP UL94V-0 本色
②	1.25 A型卧式端子	铜合金/表面镀锡
③	1.25 A型卧式焊片	铜合金/表面镀锡



CKT	DIM A	DIM B	DIM C	DIM D
2	1.25	3.05	7.25	7.25
3	2.50	4.30	8.50	8.50
4	3.75	5.55	9.75	9.75
5	5.00	6.80	11.00	11.00
6	6.25	8.05	12.25	12.25
7	7.50	9.30	13.50	13.50
8	8.75	10.55	14.75	14.75
9	10.00	11.80	16.00	16.00
10	11.25	13.05	17.25	17.25
11	12.50	14.30	18.50	18.50
12	13.75	15.55	19.75	19.75
13	15.00	16.80	21.00	21.00
14	16.25	18.05	22.25	22.25
15	17.50	19.30	23.50	23.50
16	18.75	20.55	24.75	24.75
17	20.00	21.80	26.00	26.00
18	21.25	23.05	27.25	27.25
19	22.50	24.30	28.50	28.50
20	23.75	25.55	29.75	29.75



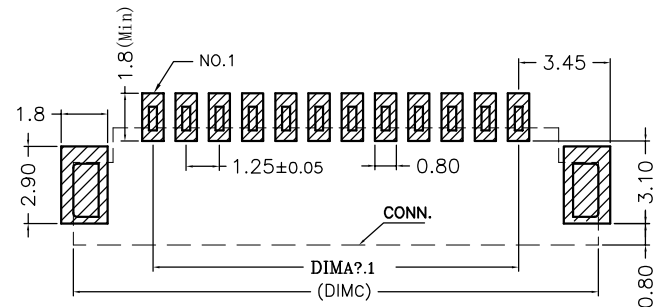
SECTION A-A



LOCK CONFIGURATION (锁扣结构)

技术指标:

1. 塑件表面应光洁、无毛边、无明显收缩、缺陷、裂纹等现象。
2. 锁扣窗口：2~3PIN为1个，≥4PIN为2个。
3. 温度范围：-40° C~85° C。
4. 额定电压：125V, AC。
5. 接触电阻：≤55mΩ (Initial) per contact, ≤20mΩ Change allowed。
6. 绝缘电阻：≥100MΩ。



适用线路板



深圳市华宇创精密电子有限公司

TOLERANCE: X.X ±0.30 X.XX ±0.25 X.XXX ±0.15 X' ±2' X.X' ±0.5'	DRAWN BY : 陈一鸣	DATE : 2014-02-23	PART NAME: 1.25PH 卧式贴片wafer
	CHECKED BY: 马跃	DATE : 2014-02-23	PART NO. : HYCW02-WFN-125B
UNIT: mm [inch] SCALE:1:1 SIZE: A4	APPROVED BY: 邱敏	DATE : 2014-02-23	DRAW NO. : HYC-2112271004
			SHEET NO. : 1 OF 1