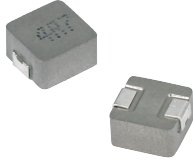


**MDE Series**  
**Molding Power Inductors**  
**Size 0320**



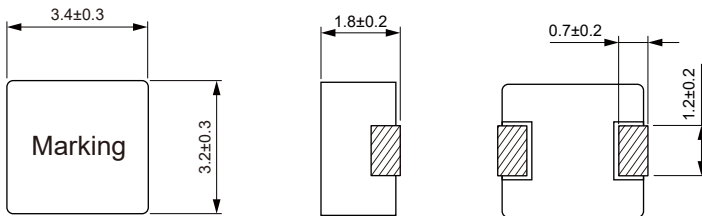
**FEATURES**

- 100% Lead(Pb)-Free and RoHS compliant
- High current, low DCR, high efficiency
- 3.7×3.5×2.0mm maximum surface mount package
- Operating temperature -40 °C ~+125 °C (Including self-temperature rise)
- Quantity: 3000pcs

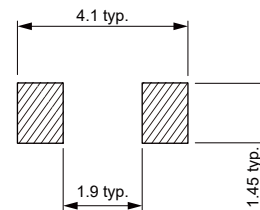
**APPLICATION**

- Note PC power system
- DC/DC converter

**Dimensions: [mm]**



**Land Pattern: [mm]**



**Electrical Properties:**

Part No	Inductance @ 100kHz/1V (μH)	Tolerance	DC Resistance Max. (mΩ)	Saturation Current Typ. (A)	Temperature Rise Current Typ. (A)
MDE0320-R33M	0.33	±20%	21	10.0	8.0
MDE0320-R47M	0.47	±20%	23	9.0	7.0
MDE0320-R68M	0.68	±20%	29	7.0	5.5
MDE0320-1R0M	1.00	±20%	38	5.0	4.0
MDE0320-1R5M	1.50	±20%	50	4.0	3.8
MDE0320-2R2M	2.20	±20%	75	3.7	3.5
MDE0320-3R3M	3.30	±20%	145	3.5	3.0
MDE0320-4R7M	4.70	±20%	200	3.0	2.6
MDE0320-6R8M	6.80	±20%	300	2.2	1.9
MDE0320-100M	10.0	±20%	422	1.6	1.4

Saturation Current will cause L to drop approximately 30%

Temperature Rise Current: The actual value of DC current when the temperature rise is  $\Delta T=40^{\circ}\text{C}$