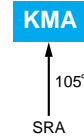


KMA Series

- 7mm height
- Endurance : 1,000 hours at 105°C
- Solvent resistant type (see PRECAUTIONS AND GUIDELINES)
- RoHS Compliant



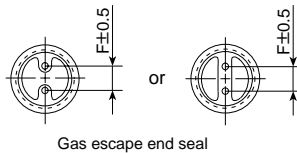
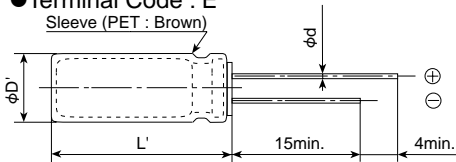
◆SPECIFICATIONS

| Items | Characteristics | | | | | | | | | | |
|--|---|--------------------------------------|------|------|------|-------------------------|----------------------------|------|------|------------------|--|
| Category | -55 to +105°C | | | | | | | | | | |
| Temperature Range | -55 to +105°C | | | | | | | | | | |
| Rated Voltage Range | 4 to 63V _{dc} | | | | | | | | | | |
| Capacitance Tolerance | ±20% (M) (at 20°C, 120Hz) | | | | | | | | | | |
| Leakage Current | I=0.01CV or 3μA, whichever is greater. Where, I : Max. leakage current (μA), C : Nominal capacitance (μF), V : Rated voltage (V) (at 20°C after 2 minutes) | | | | | | | | | | |
| Dissipation Factor (tanδ) | Rated voltage (V _{dc}) | 4V | 6.3V | 10V | 16V | 25V | 35V | 50V | 63V | | |
| | tanδ (Max.) | 0.35 | 0.22 | 0.19 | 0.16 | 0.14 | 0.12 | 0.10 | 0.08 | (at 20°C, 120Hz) | |
| Low Temperature Characteristics (Max. Impedance Ratio) | Rated voltage (V _{dc}) | 4V | 6.3V | 10V | 16V | 25V | 35V | 50V | 63V | | |
| | Z(-25°C)/Z(+20°C) | 4 | 3 | 2 | 2 | 2 | 2 | 2 | 2 | (at 120Hz) | |
| | Z(-40°C)/Z(+20°C) | 10 | 6 | 5 | 3 | 3 | 3 | 3 | 3 | (at 120Hz) | |
| Endurance | The following specifications shall be satisfied when the capacitors are restored to 20°C after the rated voltage is applied for 1,000 hours at 105°C. | | | | | | | | | | |
| | Rated voltage | 4 to 16V _{dc} | | | | 25 to 63V _{dc} | | | | | |
| | Capacitance change | ≤±25% of the initial value | | | | | ≤±20% of the initial value | | | | |
| | D.F. (tanδ) | ≤200% of the initial specified value | | | | | | | | | |
| | Leakage current | ≤The initial specified value | | | | | | | | | |
| Shelf Life | The following specifications shall be satisfied when the capacitors are restored to 20°C after exposing them for 1,000 hours at 105°C without voltage applied. Before the measurement, the capacitor shall be preconditioned by applying voltage according to Item 4.1 of JIS C 5101-4. | | | | | | | | | | |
| | Rated voltage | 4 to 16V _{dc} | | | | 25 to 63V _{dc} | | | | | |
| | Capacitance change | ≤±25% of the initial value | | | | | ≤±20% of the initial value | | | | |
| | D.F. (tanδ) | ≤200% of the initial specified value | | | | | | | | | |
| | Leakage current | ≤The initial specified value | | | | | | | | | |

◆DIMENSIONS [mm]

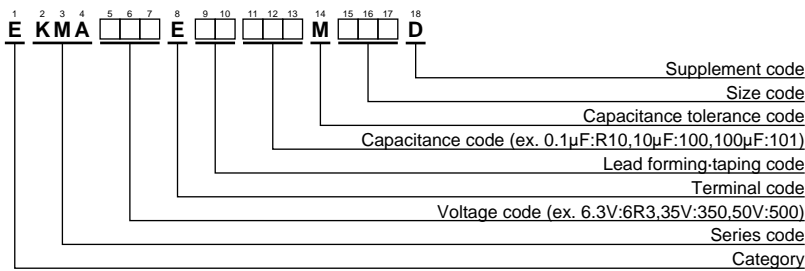
- Terminal Code : E

Sleeve (PET : Brown)



| φD | 4 | 5 | 6.3 |
|-----|------------|------|------|
| φd | 0.45 | 0.45 | 0.45 |
| F | 1.5 | 2.0 | 2.5 |
| φD' | φD+0.5max. | | |
| L' | L+1.0max. | | |

◆PART NUMBERING SYSTEM



Please refer to "Product code guide (radial lead type)"

◆STANDARD RATINGS

| WV (Vdc) | Cap (μF) | Case size φDXL(mm) | tanδ | Rated ripple current (mA _{rms} /105°C,120Hz) | Part No. | WV (Vdc) | Cap (μF) | Case size φDXL(mm) | tanδ | Rated ripple current (mA _{rms} /105°C,120Hz) | Part No. |
|----------|----------|--------------------|------|---|--------------------|----------|----------|--------------------|------|---|--------------------|
| 4 | 33 | 4X7 | 0.35 | 26 | EKMA4R0E□□330MD07D | 50 | 0.10 | 4X7 | 0.10 | 1.3 | EKMA500E□□R10MD07D |
| | 47 | 4X7 | 0.35 | 34 | EKMA4R0E□□470MD07D | | 0.15 | 4X7 | 0.10 | 2.0 | EKMA500E□□R15MD07D |
| | 100 | 5X7 | 0.35 | 61 | EKMA4R0E□□101ME07D | | 0.22 | 4X7 | 0.10 | 2.9 | EKMA500E□□R22MD07D |
| | 220 | 6.3X7 | 0.35 | 95 | EKMA4R0E□□221MF07D | | 0.33 | 4X7 | 0.10 | 3.5 | EKMA500E□□R33MD07D |
| 6.3 | 22 | 4X7 | 0.22 | 31 | EKMA6R3E□□220MD07D | | 0.47 | 4X7 | 0.10 | 5.0 | EKMA500E□□R47MD07D |
| | 47 | 5X7 | 0.22 | 47 | EKMA6R3E□□470ME07D | | 0.68 | 4X7 | 0.10 | 7.1 | EKMA500E□□R68MD07D |
| 10 | 15 | 4X7 | 0.19 | 28 | EKMA100E□□150MD07D | | 1.0 | 4X7 | 0.10 | 10 | EKMA500E□□R10MD07D |
| | 33 | 5X7 | 0.19 | 43 | EKMA100E□□330ME07D | | 1.5 | 4X7 | 0.10 | 12 | EKMA500E□□R15MD07D |
| | 68 | 6.3X7 | 0.19 | 63 | EKMA100E□□680MF07D | | 2.2 | 4X7 | 0.10 | 15 | EKMA500E□□R22MD07D |
| | 100 | 6.3X7 | 0.19 | 80 | EKMA100E□□101MF07D | | 3.3 | 4X7 | 0.10 | 18 | EKMA500E□□R33MD07D |
| 16 | 6.8 | 4X7 | 0.16 | 20 | EKMA160E□□6R8MD07D | | 4.7 | 5X7 | 0.10 | 23 | EKMA500E□□R47ME07D |
| | 10 | 4X7 | 0.16 | 25 | EKMA160E□□100MD07D | | 6.8 | 6.3X7 | 0.10 | 28 | EKMA500E□□R68MF07D |
| | 15 | 5X7 | 0.16 | 31 | EKMA160E□□150ME07D | | 10 | 6.3X7 | 0.10 | 34 | EKMA500E□□100MF07D |
| | 22 | 5X7 | 0.16 | 39 | EKMA160E□□220ME07D | | 22 | 6.3X7 | 0.10 | 57 | EKMA500E□□220MF07D |
| | 47 | 6.3X7 | 0.16 | 59 | EKMA160E□□470MF07D | | 63 | 0.10 | 4X7 | 0.08 | 1.3 |
| 100 | 6.3X7 | 0.16 | 97 | EKMA160E□□101MF07D | 0.15 | | | 4X7 | 0.08 | 1.9 | EKMA630E□□R15MD07D |
| 25 | 33 | 6.3X7 | 0.14 | 53 | EKMA250E□□330MF07D | 0.22 | | 4X7 | 0.08 | 2.9 | EKMA630E□□R22MD07D |
| | 47 | 6.3X7 | 0.14 | 71 | EKMA250E□□470MF07D | 0.33 | | 4X7 | 0.08 | 4.4 | EKMA630E□□R33MD07D |
| 35 | 4.7 | 4X7 | 0.12 | 20 | EKMA350E□□4R7MD07D | 0.47 | | 4X7 | 0.08 | 7.9 | EKMA630E□□R47MD07D |
| | 6.8 | 5X7 | 0.12 | 24 | EKMA350E□□6R8ME07D | 0.68 | | 4X7 | 0.08 | 9.2 | EKMA630E□□R68MD07D |
| | 10 | 5X7 | 0.12 | 30 | EKMA350E□□100ME07D | 1.0 | | 4X7 | 0.08 | 11 | EKMA630E□□R10MD07D |
| | 15 | 6.3X7 | 0.12 | 37 | EKMA350E□□150MF07D | 1.5 | | 4X7 | 0.08 | 13 | EKMA630E□□R15MD07D |
| | 22 | 6.3X7 | 0.12 | 47 | EKMA350E□□220MF07D | 2.2 | | 4X7 | 0.08 | 17 | EKMA630E□□R22MD07D |
| | 33 | 6.3X7 | 0.12 | 64 | EKMA350E□□330MF07D | 3.3 | | 5X7 | 0.08 | 21 | EKMA630E□□R33ME07D |
| | | | | | | 4.7 | 6.3X7 | 0.08 | 26 | EKMA630E□□R47MF07D | |
| | | | | | | 10 | 6.3X7 | 0.08 | 43 | EKMA630E□□100MF07D | |

□□ : Enter the appropriate lead forming or taping code.