

MMBT3906M

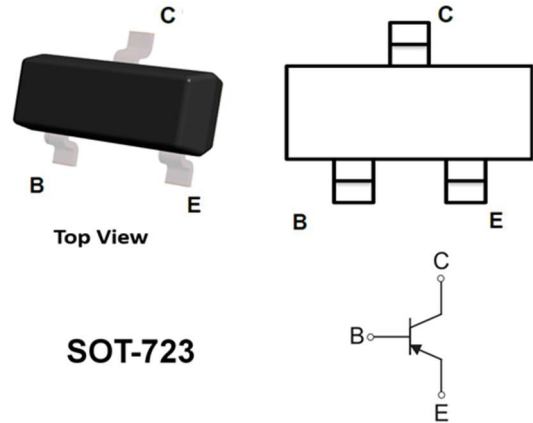
MMBT3906M PNP General Purpose Transistor

General description

- PNP General Purpose Transistor

FEATURES

- SOT-723 General Purpose Transistors.
- V_{CE0} -40V
- I_c -200mA
- P_C 100mW
- Complementary to MMBT3904M
- Small Outline Surface Mount Package.
- RoHS Compliant / Green EMC.



SOT-723

Type	MMBT3904M
Marking	3N

Absolute Maximum Ratings($T_a=25^\circ\text{C}$)

Parameter	Symbol	Limit	Unit
Collector-Base Voltage	V_{CB0}	-40	V
Collector-Emitter Voltage	V_{CE0}	-40	V
Emitter-Base Voltage	V_{EB0}	5	V
Collector Current -Continuous	I_c	-0.2	A
Power Dissipation	P_C	0.1	W
Thermal Resistance from Junction to Ambient	$R_{\theta JA}$	1250	$^\circ\text{C/W}$
Junction Temperature	T_J	150	$^\circ\text{C}$
Storage Temperature	T_{STG}	-55~+150	$^\circ\text{C}$

MMBT3906M

ELECTRICAL CHARACTERISTICS @ 25°C Unless Otherwise Specified

Parameter	Symbol	Conditions	Min	Typ	Max	Units
Collector-base breakdown voltage	$V_{(BR)CBO}$	$I_C=10\mu A, I_E=0$	-40			V
Collector-emitter breakdown voltage	$V_{(BR)CEO}$	$I_C=1mA, I_B=0$	-40			V
Emitter-base breakdown voltage	$V_{(BR)EBO}$	$I_E=10\mu A, I_C=0$	-5			V
Collector cut-off current	I_{CEX}	$V_{CE}=-30V, V_{EB(off)}=-3V$			-50	nA
Emitter cut-off current	I_{EBO}	$V_{EB}=-5V, I_C=0$			-100	nA
DC current gain	h_{FE}	$V_{CE}=-1V, I_C=-0.1mA$	40			
		$V_{CE}=-1V, I_C=-1mA$	70			
		$V_{CE}=-1V, I_C=-10mA$	100		300	
		$V_{CE}=-1V, I_C=-50mA$	60			
Collector-emitter saturation voltage	$V_{CE(sat)}$	$I_C=-10mA, I_B=-1mA$			-0.2	V
		$I_C=-50mA, I_B=-5mA$			-0.3	V
Base-emitter saturation voltage	$V_{BE(sat)}$	$I_C=-10mA, I_B=-1mA$	-0.65		-0.85	V
		$I_C=-50mA, I_B=-5mA$			-0.95	V
Transition frequency	f_T	$V_{CE}=-20V, I_C=-10mA, f=100MHz$	300			MHz
Output capacitance	C_{ob}	$V_{CB}=-5V, I_E=0, f=1MHz$			4	pF
Input capacitance	C_{ib}	$V_{EC}=-0.5V, I_C=0, f=1MHz$			8	pF
Noise figure	NF	$V_{CE}=-5V, I_C=-0.1mA, f=1MHz, R_S=1k\Omega$			5	dB

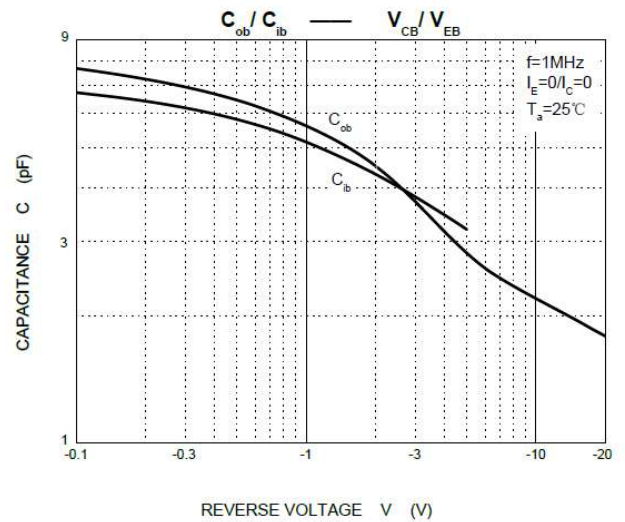
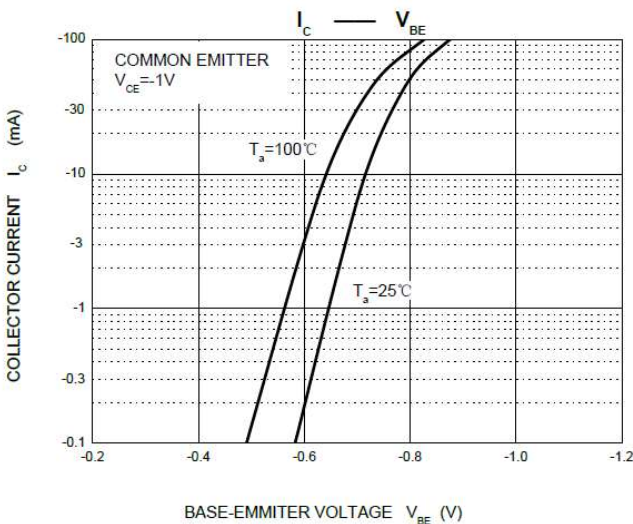
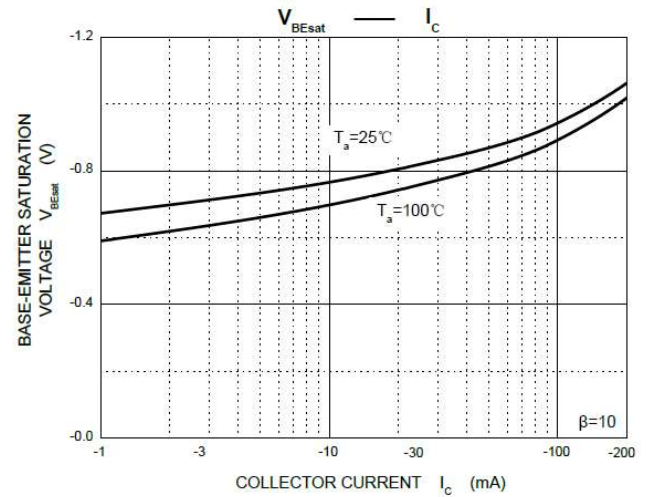
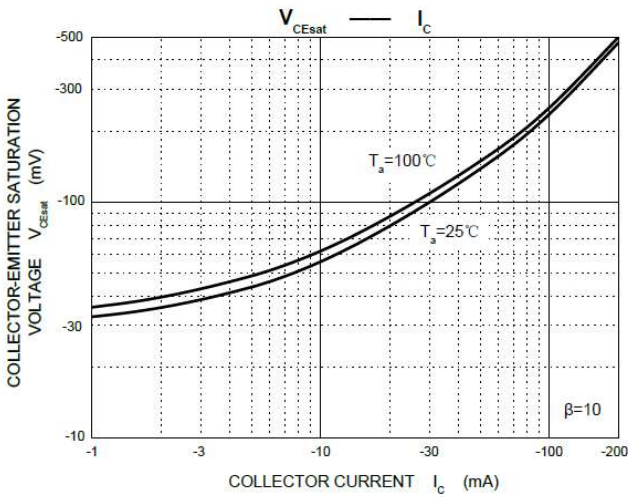
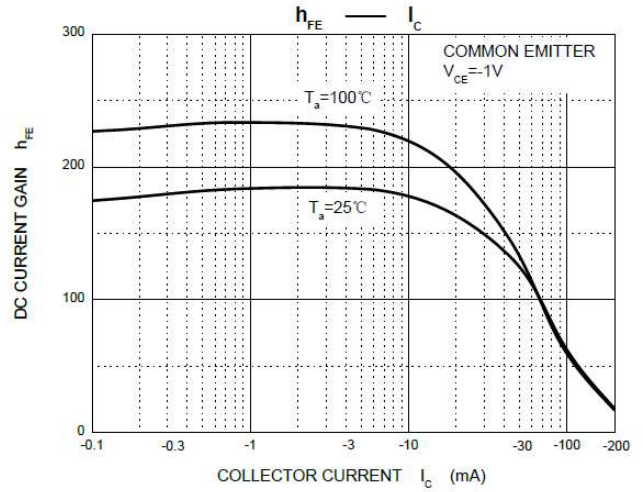
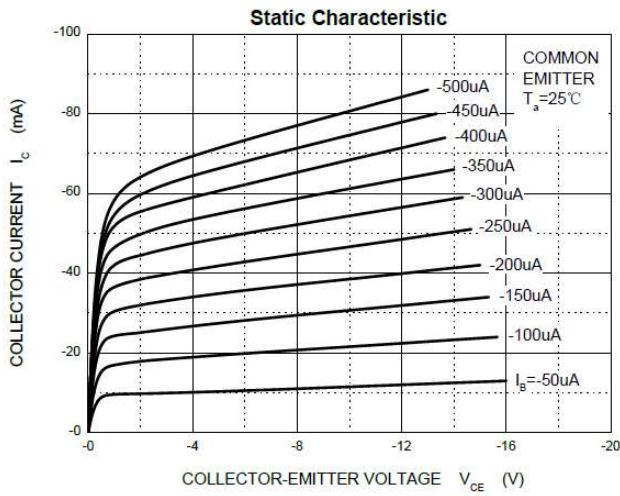
MMBT3906M

Parameter	Symbol	Conditions	Min	Typ	Max	Units
Delay time	t_d	$V_{CC}=-3V, V_{BE(off)}=-0.5V, I_C=-10mA, I_{B1}=-1mA$			35	ns
Rise time	t_r				25	ns
Storage time	t_s	$V_{CC}=-3V, I_C=-10mA, I_{B1}=I_{B2}=-1mA$			225	ns
Fall time	t_f				75	ns

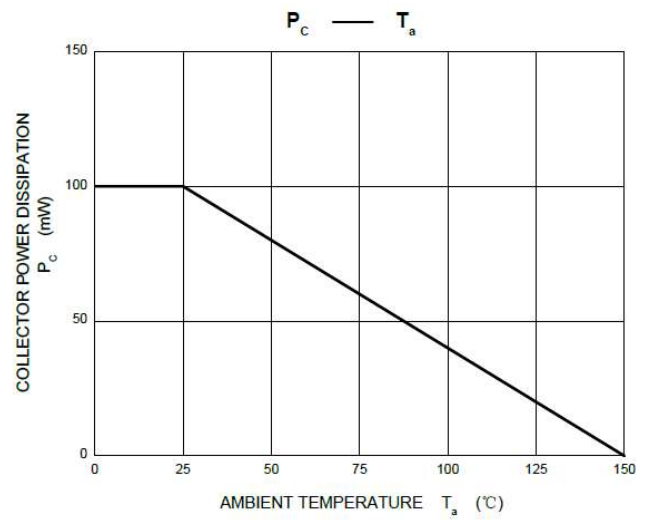
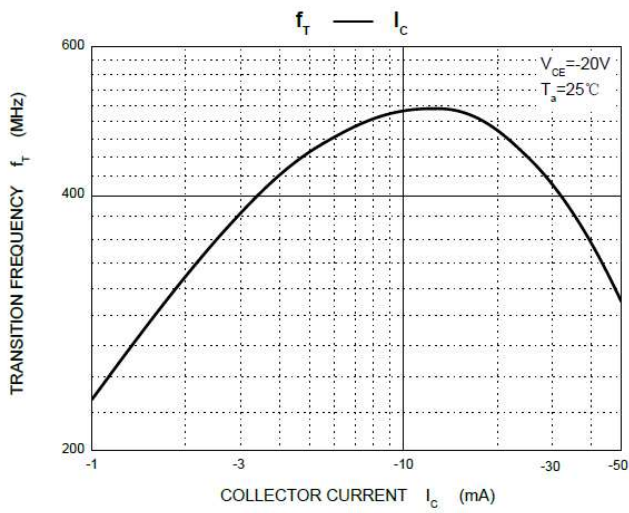


MMBT3906M

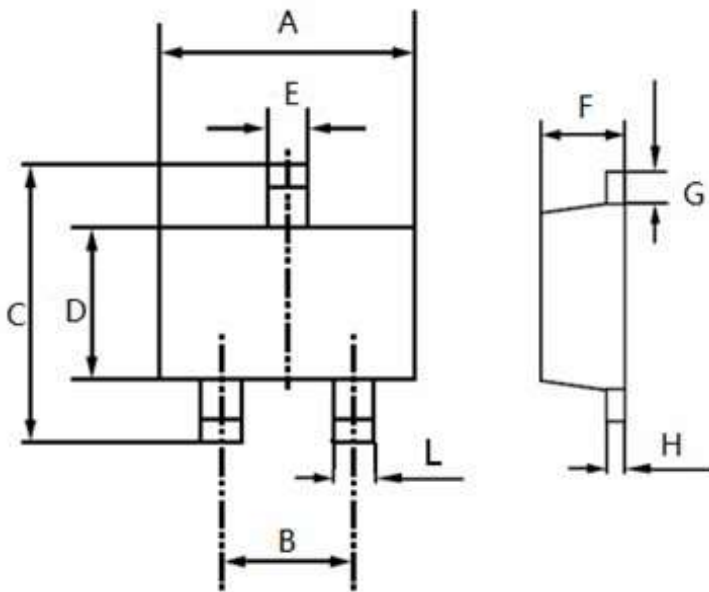
TYPICAL CHARACTERISTIC



MMBT3906M



PACKAGE DIMENSIONS



Symbol	Dimensions In Millimeters	
	Min	Max
A	1.100	1.300
B	0.8typ	
C	1.100	1.300
D	0.700	0.900
E	0.200	0.300
F	0.400	0.500
G	0.150	0.250
H	0.060	0.160
L	0.150	0.250

Important Notice and Disclaimer

DOESHARE has used reasonable care in preparing the information included in this document, but DOESHARE does not warrant that such information is error free. DOESHARE assumes no liability whatsoever for any damages incurred by you resulting from errors in or omissions from the information included herein.

DOESHARE no warranty, representation or guarantee regarding the documents, circuits and products specification, DOESHARE reservation rights to make changes for any documents, products, circuits and specifications at any time without notice.

Purchasers are solely responsible for the choice, selection and use of the DOESHARE products and services described herein, and DOESHARE assumes no liability whatsoever relating to the choice, selection or use of the products and services described herein.

No license, express or implied, by implication or otherwise under any intellectual property rights of DOESHARE.

Resale of DOESHARE products with provisions different from the statements and/or technical features set forth in this document shall immediately void any warranty granted by DOESHARE for the DOESHARE product or service described herein and shall not create or extend in any manner whatsoever, any liability of DOESHARE.