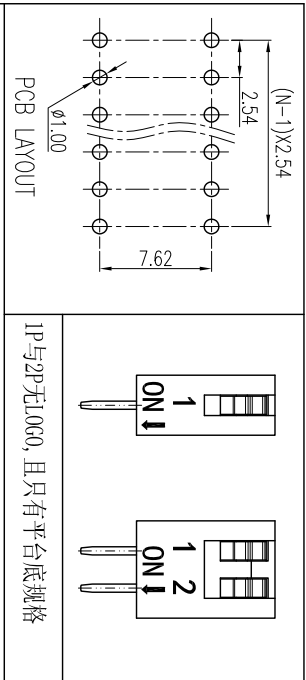
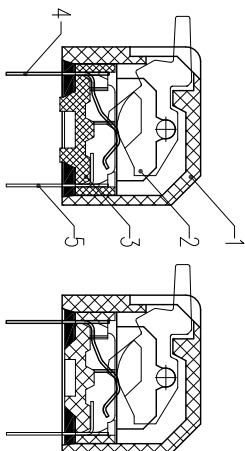
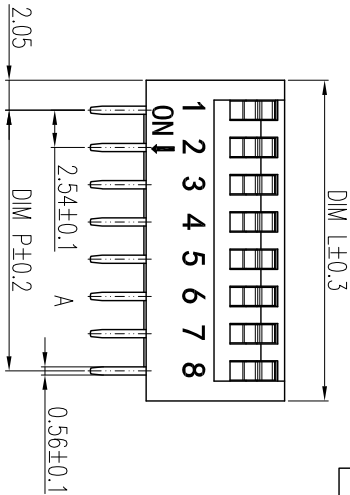
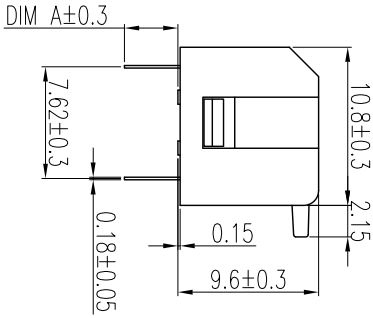
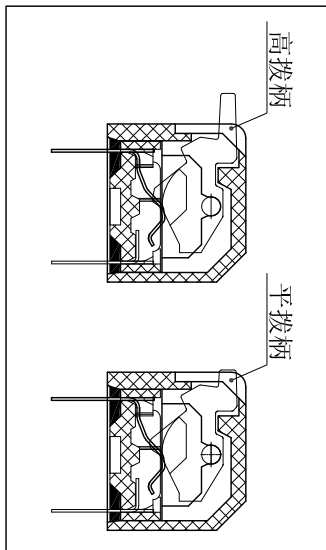
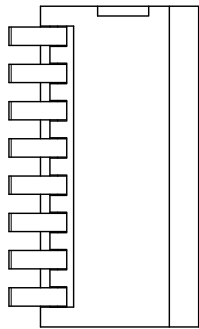


REV	ECN	CONTENT	CHECK	DATE
V0.0		初版发行	LJ	2019.01.13
V1.0		整理图纸	WL	2020.06.03



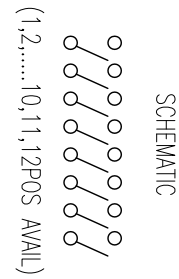
DIM A	长针
凸台底座	3.65
平台底座	3.80



- 技术要求:
- 额定电流: 25mA, 24VDC (开与关切换时) 100mA, 50VDC (开与关不切换时)
 - 接触阻抗: $\leq 50m\Omega$ (初始), $\leq 100m\Omega$ (寿命测试后)
 - 绝缘电阻: $\geq 100M\Omega / 500 VDC$
 - 耐电压: 500VAC/1minute
 - 拨动力: 1000g max
 - 机械寿命: ≥ 2000 cycles
 - 使用温度: $-40^\circ C \sim +85^\circ C$
 - 存储温度: $-40^\circ C \sim +85^\circ C$
 - 符合RoHS要求

焊接说明:
 手工焊接: 30W电烙铁, $320 \pm 5^\circ C$, 3S max
 波峰焊接: $250 \pm 10^\circ C$, 5S max
 焊接前保持开关在“OFF”状态

HOW TO ORDER
 KF1002-XXP-XX X X X-XXX-XXX
 产品型号 P 数 触点 R3: 磁石 B0: 磁石
 G: 凸台底座 F: 平台底座 L: 线圈
 G: 高接触 L: 平接触
 G: 高接触 L: 平接触



(1,2,...,10,11,12POS AVAILABLE)

General tolerance in mm

radii and chamfers

shorter angle side

≡ //

over 0 to ±0.15	over 3 to ±0.2	over 6 to ±0.25	over 30 to ±0.3	over 120 to ±0.5	over 400 to ±0.8	over 0.5 to ±0.2	over 3 to ±0.5	over 6 to ±1.0	up to ±1°	over 10 to ±30'	over 50 to ±20'	over 100 to 0.5	over 100 to 0.2	over 150 to 0.3	over 50 to 0.5	over 100 to 0.2	over 150 to 0.3
-----------------	----------------	-----------------	-----------------	------------------	------------------	------------------	----------------	----------------	-----------	-----------------	-----------------	-----------------	-----------------	-----------------	----------------	-----------------	-----------------

POLES	DIM P	DIM L
1	/	4.11
2	2.54	6.65
3	5.08	9.19
4	7.62	11.73
5	10.16	14.27
6	12.70	16.81
7	15.24	19.35
8	17.78	21.89
9	20.32	24.43
10	22.86	26.97
11	25.40	29.51
12	27.94	32.05

序号	零件名称	零件编码	数量	材质	备注
1	外壳	/	1	工程塑料	UL94V-0
2	拔柄	/	1	工程塑料	UL94V-0
3	底座	/	1	工程塑料	UL94V-0
4	PIN1	/	1	铜合金	镀金
5	PIN2	/	1	铜合金	镀金

APP. DATE: 2020.6.3	NAME: KF1002-XXP-XXXXLX-0N-XXX
CHK. DATE: 2020.6.3	DWGNO. W20004301
DESIGNER: 魏文超	SHEET 1/1
DATE: 2020.6.3	PROJECTION-METHOD

凯峰电子
 KAIFENG ELECTRONICS CO., LTD