

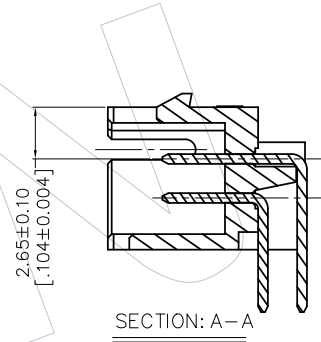
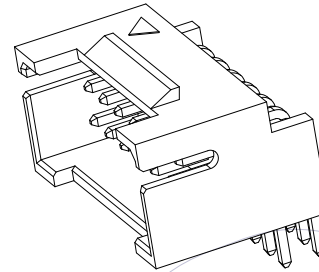
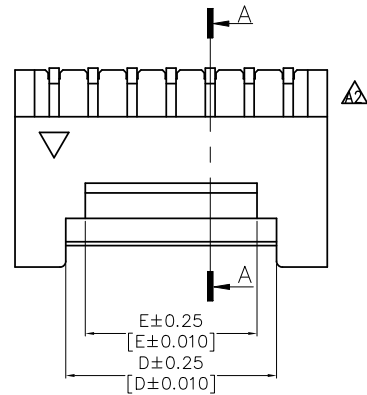
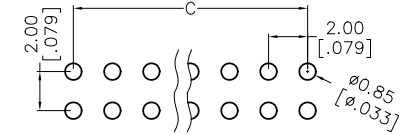
# HSF

**NOTES:**

Current Rating: 3.0A AMP  
 Withstand Voltage: 250V AC/minute  
 Contact Resistance: 30milliohm Max  
 Withstand Voltage: 1000V AC/Minute  
 Insulation Resistance: 1000Megohm Min  
 Operation Temperature: -25℃to+85℃

Contact Material: Brass  
 Contact plating: Au or Sn Over Ni  
 Insulator Material: Polyester(UL94V-0)  
 Standard: PA6T+30%G.F

RECOMMENDED PCB LAYOUT  
 TOLERANCE IS ±0.05



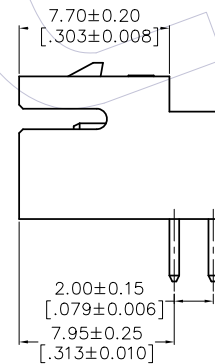
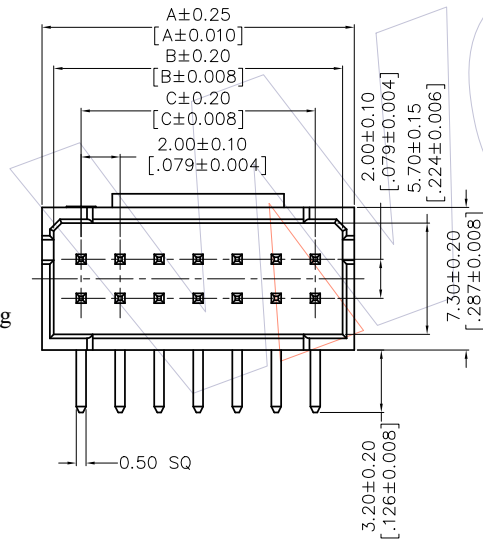
## Ordering Information

WF2005-2WR XX E X 1


No. of Pins  
Per row :  
4P~20P

Insulator Color:  
W= White  
B= Black  
E= Beige

Packing:  
T=Tube  
A=Tray  
0=PE Bag



Circuits	Part NO.	Dimensions				
		A	B	C	D	E
2X04	WF2005-2WR04EX1	10.00[0.394]	8.80[0.346]	6.00[0.236]	4.80[0.189]	2.80[0.110]
2X05	WF2005-2WR05EX1	12.00[0.472]	10.80[0.425]	8.00[0.315]	6.80[0.268]	4.80[0.189]
2X06	WF2005-2WR06EX1	14.00[0.551]	12.80[0.504]	10.00[0.394]	8.80[0.346]	6.80[0.268]
2X07	WF2005-2WR07EX1	16.00[0.630]	14.80[0.583]	12.00[0.472]	10.80[0.425]	8.80[0.346]
2X08	WF2005-2WR08EX1	18.00[0.709]	16.80[0.661]	14.00[0.551]	12.80[0.504]	10.80[0.425]
2X09	WF2005-2WR09EX1	20.00[0.787]	18.80[0.740]	16.00[0.630]	14.80[0.583]	12.80[0.504]
2X10	WF2005-2WR10EX1	22.00[0.866]	20.80[0.819]	18.00[0.709]	16.80[0.661]	14.80[0.583]
2X11	WF2005-2WR11EX1	24.00[0.945]	22.80[0.898]	20.00[0.787]	18.80[0.740]	16.80[0.661]
2X12	WF2005-2WR12EX1	26.00[1.024]	24.80[0.976]	22.00[0.866]	20.80[0.819]	18.80[0.740]
2X13	WF2005-2WR13EX1	28.00[1.102]	26.80[1.055]	24.00[0.945]	22.80[0.898]	20.80[0.819]
2X14	WF2005-2WR14EX1	30.00[1.181]	28.80[1.134]	26.00[1.024]	24.80[0.976]	22.80[0.898]
2X15	WF2005-2WR15EX1	32.00[1.260]	30.80[1.213]	28.00[1.102]	26.80[1.055]	24.80[0.976]
2X16	WF2005-2WR16EX1	34.00[1.339]	32.80[1.291]	30.00[1.181]	28.80[1.134]	26.80[1.055]
2X17	WF2005-2WR17EX1	36.00[1.418]	34.80[1.370]	32.00[1.260]	30.80[1.213]	28.80[1.134]
2X18	WF2005-2WR18EX1	38.00[1.496]	36.80[1.449]	34.00[1.339]	32.80[1.291]	30.80[1.213]
2X19	WF2005-2WR19EX1	40.00[1.575]	38.80[1.528]	36.00[1.418]	34.80[1.370]	32.80[1.291]
2X20	WF2005-2WR20EX1	42.00[1.654]	40.80[1.606]	38.00[1.496]	36.80[1.449]	34.80[1.370]

REV	DATE	MODIFICATION DESCRIPTION	CHANGE	OPERATION	DRAW	DATE	SCALE	FIT	PART NO.	 <a href="http://www.wcon.com">Http: www.wcon.com</a> WCON-Dongguan Tel: +86 769 85358920 Fax: +86 769 85358915 E-mail: sales@wcon.com WCON-Kunshan Tel: +86 512 57468408 Fax: +86 512 57468468 E-mail: salesks@wcon.com
A2	2019/01/21	Modify Drawing	-----	x.x ±0.40	Ding	2019/01/21	UNIT	mm	WF2005-2WRXXXX1	
A1	2017/05/10	Modify Drawing	-----	x.xx ±0.25	CHECK	DATE	SIZE	A4	TITLE:	
A0	2013/06/08	NEW	-----	x.xxx ±0.15	APPROVE	DATE	SHEET	1/1	2.00mm PH WTB WAFER 90° DIP	
				Angle ± 3°			PROJ.		Customer NO.	
				DIM TOL						