

# APPROVED SHEET


CUSTOMER: 万顺通

CUSTOMER P/N:

JWD P/N: D12401 G

REV: R0

DESCRIPTION: 10/100 BASE-TX  
Laser Marking

CUSTOMER APPROVAL		COMPANY APPROVAL	
			
INSPECTED BY:		ISSUED BY:	Katherine
CHECKED BY:		CHECKED BY:	Eason
APPROVED BY:		APPROVED BY:	Focus
APPROVED DATE:		ISSUED DATE:	2019-1-10

Please Return One Copy to Us After Approved,TKS! (承认后请回寄一份,谢谢)



绵阳高新区经纬达科技有限公司

Mianyang Highly-Tech Jingweida Scientific Co., Ltd

地址: 四川省绵阳市高新区永兴镇永兴工业园

ADD: YongXing Industrial of High-tech Zone In Mianyang City,

Sichuan Province

TEL: +86-816-2561202 FAX: +86-816-2562518

E-MAIL: myjwd@myjwd.com

WEB: www.myjwd.com



# 绵阳高新区经纬达科技有限公司

Mianyang Highly-Tech Jingweida Scientific Co., Ltd

## RECORD OF REVISION

Rev	Description of changes	Date
R0	新版发行	2019-1-10

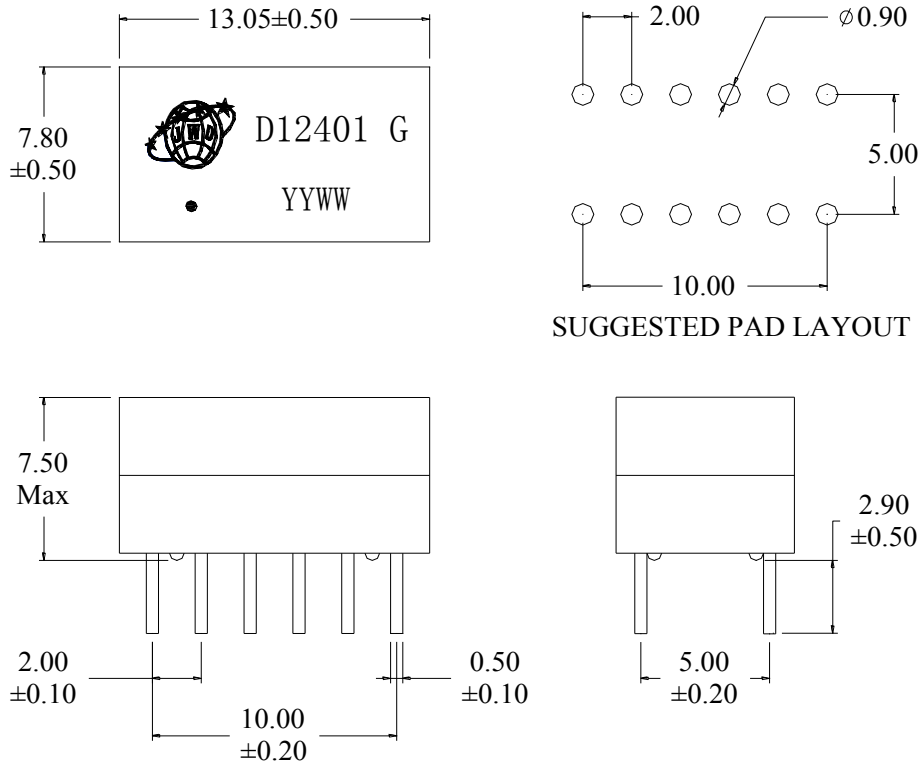
DESCRIPTION	JWD P/N	SPEC NO.	REV: R0
100/1000 BASE-T	D12401 G	JWD-PAB-2818	PAGE: 1/5



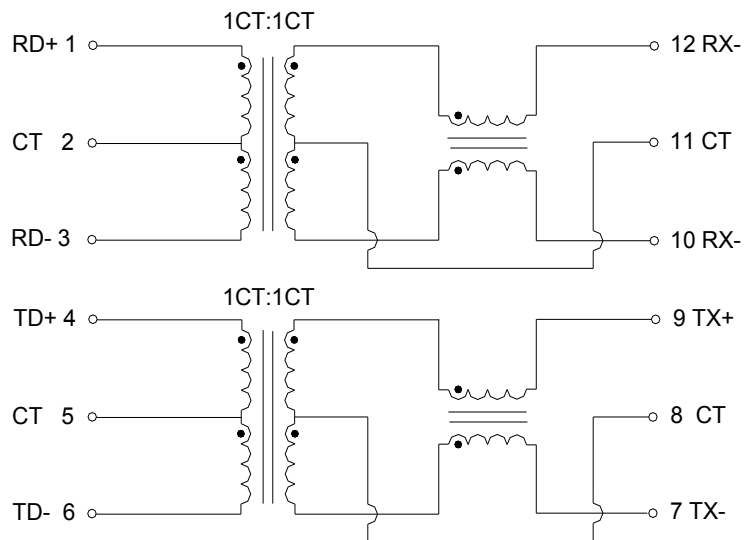
# 绵阳高新区经纬达科技有限公司

Mianyang Highly-Tech Jingweida Scientific Co., Ltd

## A. MECHANICAL(unit:mm)



## B. SCHEMATICS



DESCRIPTION	JWD P/N	SPEC NO.	REV: R0
10/100 BASE-TX	D12401 G	JWD-PAB-2818	PAGE: 2/5



# 绵阳高新区经纬达科技有限公司

Mianyang Highly-Tech Jingweida Scientific Co., Ltd

## C. ELECTRICAL SPECIFICATIONS @25°C

1. OCL: 350uH Min @ 100KHz, 0.1V 8mA DC BIAS
2. Leakage Inductance: 0.5uH Max @ 100KHz, 0.1V
3. DCR: 1400mΩ Max
4. Turns Ratio: 1CT:1CT±5%
5. Insertion Loss: -1.1 dB Max @ 1-100 MHz
6. Return Loss: -18 dB Min @ 1-30 MHz  
-14.4 dB Min @ 40 MHz  
-13.1 dB Min @ 50 MHz  
-12 dB Min @ 60-80 MHz
7. Cross Talk: -30 dB Min @ 1-100 MHz
8. Common Mode Rejection: -30 dB Min @ 1-100 MHz
9. Isolation Hipot: 1500VAC 1mA 60S
10. Operating temperature 0°C to +70°C
11. Storage temperature -25°C to +125°C

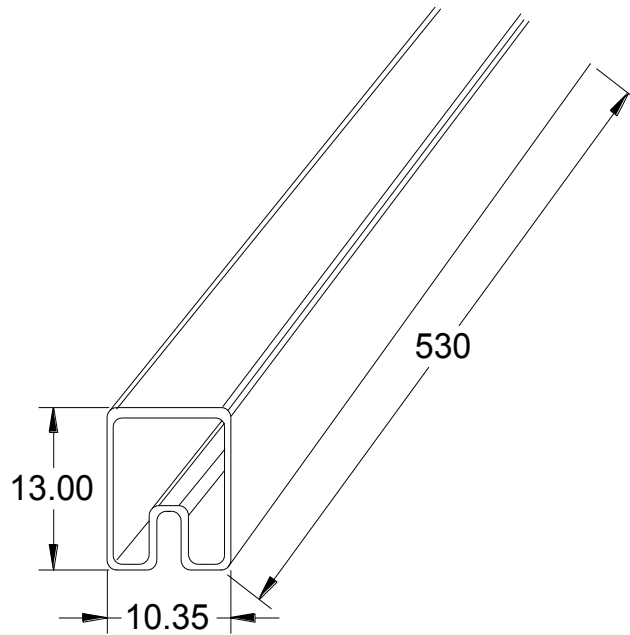
DESCRIPTION	JWD P/N	SPEC NO.	REV: R0
10/100 BASE-TX	D12401 G	JWD-PAB-2818	PAGE: 3/5



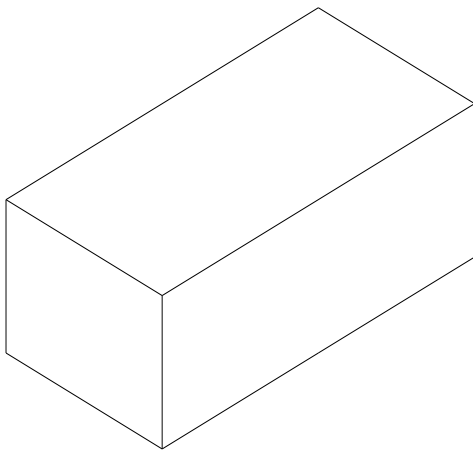
# 绵阳高新区经纬达科技有限公司

Mianyang Highly-Tech Jingweida Scientific Co., Ltd

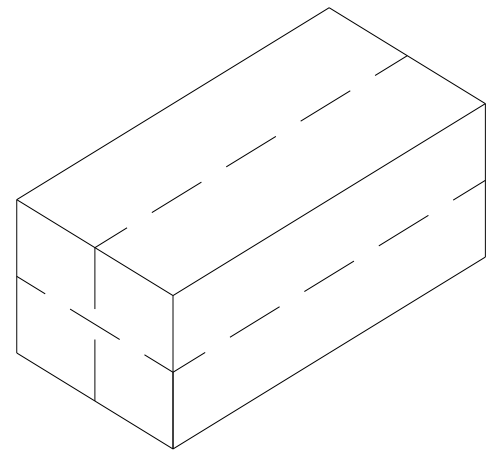
## D. PACKAGE INFORMATION



Tube: 530\*13.0\*10.35mm



Inner Carton: L570\*W180\*H100mm



Export Carton: L580\*W380\*H240mm

Package Quantity:

One Tube=38Pcs

One Inner Carton=38\*90=3420Pcs

One Export Carton=3420\*4=13680Pcs

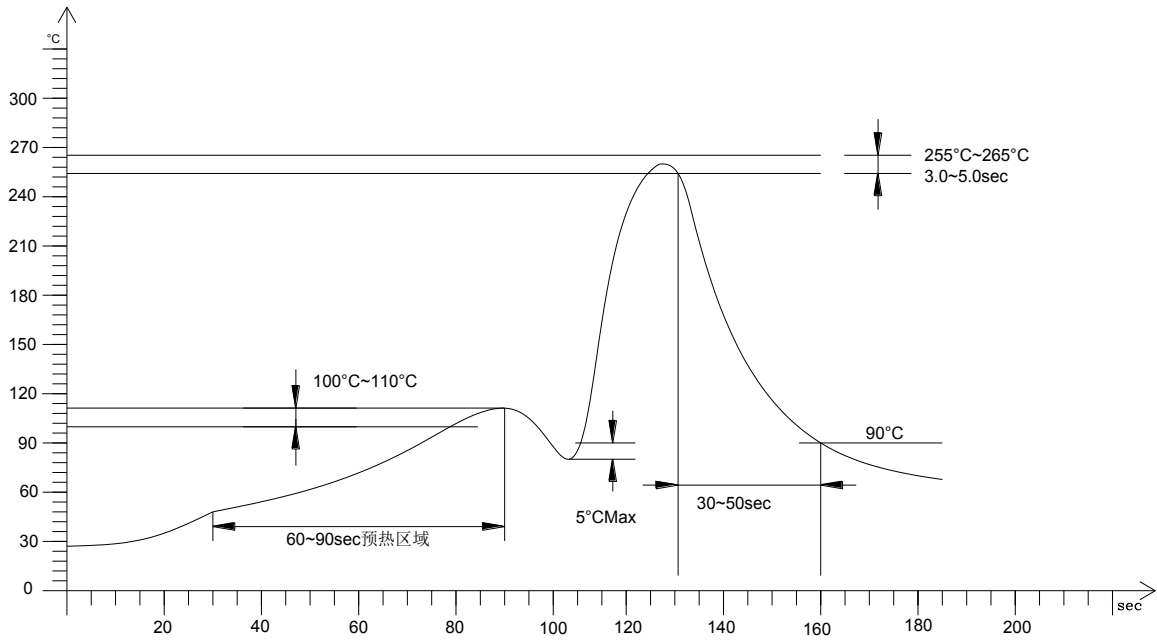
DESCRIPTION	JWD P/N	SPEC NO.	REV: R0
10/100 BASE-TX	D12401 G	JWD-PAB-2818	PAGE: 4/5



# 绵阳高新区经纬达科技有限公司

Mianyang Highly-Tech Jingweida Scientific Co., Ltd

## F. RECOMMEND WAVE SOLDERING CURVE



DESCRIPTION	JWD P/N	SPEC NO.	REV: R0
10/100 BASE-TX	D12401 G	JWD-PAB-2818	PAGE: 5/5