

8

7

6

5

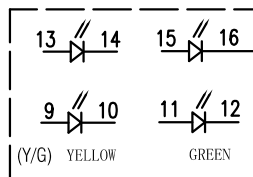
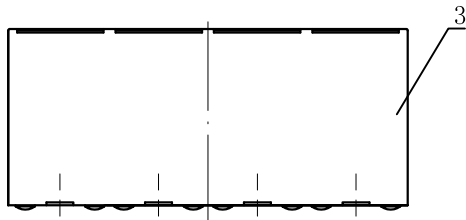
4

3

2

1

NO.	ECN NO.	DESCRIPTION	REV.	DRAW	DATE



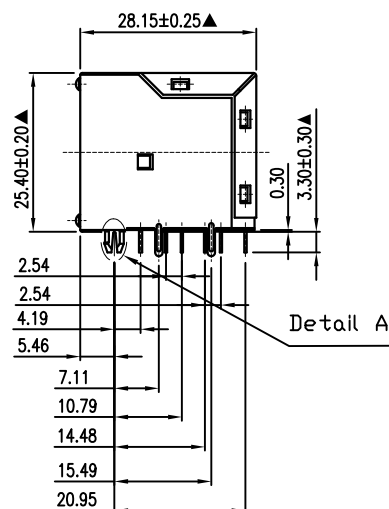
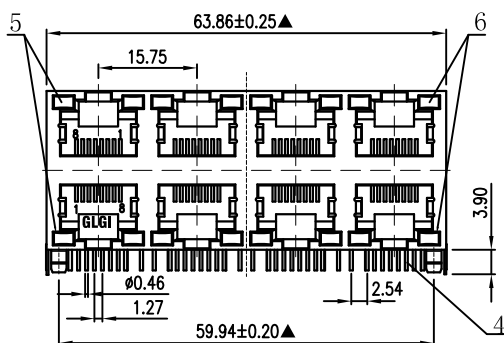
LED PIN DEFINE

45030-XX G X X 1

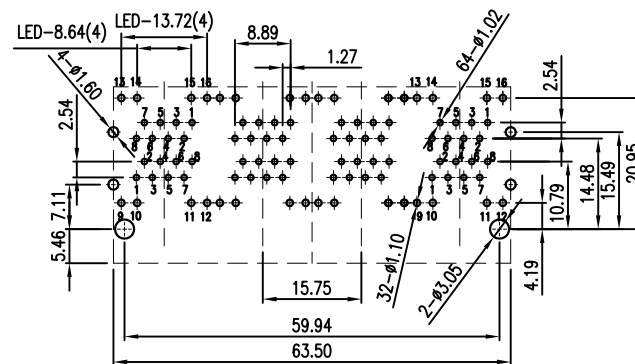
规格流水码

电镀代码

05-GOLD FLASH



Detail A

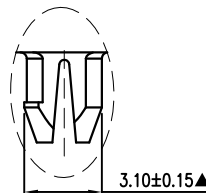
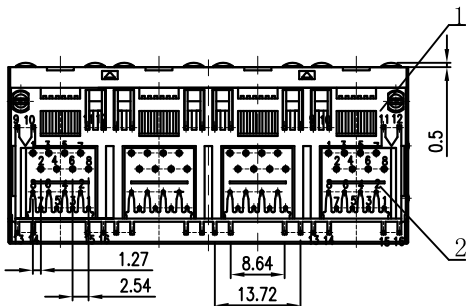


RECOMMENDED P.C.B LAYOUT TOP VIEW
(COMPONENT SIDE TOLERANCE±0.05)

MATERIALS:

1. Housing: Glass Filled PA46 BLACK (ROHS).
2. Insert: Glass Filled PBT BLACK (ROHS).
3. Shielding: C2680 T=0.20 (ROHS).
4. Contact: C51000 Ø0.46mm (ROHS).
5. Led1: YELLOW (RoSH)
6. Led2: GREEN (RoSH)

※MATES WITH MODULAR PLUG CONFORMING TO FCC PART 68, SUBPART F.
※凡标注▲记号者, 为重点尺寸.



DETAIL: A
SCALE 4:1

未注公差 容许公差 TOLERANCE		GLGNET®深圳方向电子有限公司 SHEN ZHEN GLGNET ELECTRONICS CO.,LTD.					
.X	±0.35	X.°	±3°	料号 ITEM NO.	45030-00G051	设计 DRAWER	
.XX	±0.25	.X.°	±2°	品名 ARTICLE	5931-S-2x4-L-a-8C(Y/G)	校对 CHECKED	
.XXX	±0.15	.XX.°	±1°	客户 CUSTOMER		核准 APPROVE	
单位 UNIT	mm	材料 MATERIAL		图号 DWG NO.	GLG-WL-046	日期 DATE	10.05.28
比例 SCALE	1:1	料厚 THICK		角法 PROJ.		版本 REV.	A2
张数 SHEET	1/1	料宽 WIDTH					
备注 REMARK		行程 PITCH					

8

7

6

5

4

3

2

1