

TSDR Series
SMD Shielded Tiny Power Inductor
Size 3816



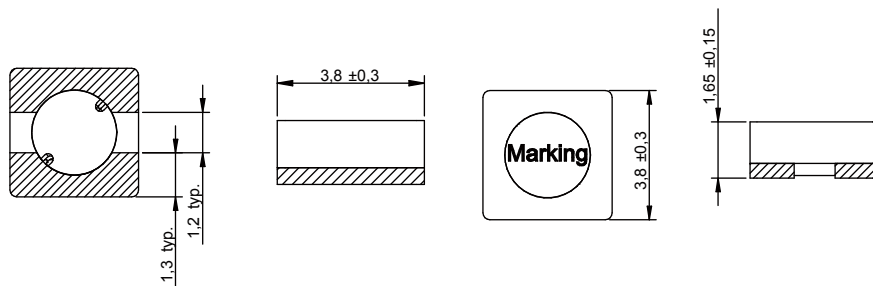
CHARACTERISTICS

- Low profile type
- Magnetically shielded
- Different sizes available
- Quantity: 1000pcs

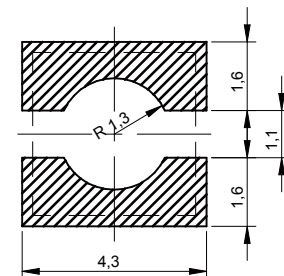
APPLICATION

- DC/DC converter
- LC filter

Dimensions: [mm]



Land Pattern: [mm]



Electrical Properties:

Part No	Inductance (μH)	Tolerance	Temperature Rise Current (A)	Saturation Current (A)	DCR Typ. (mΩ)	DCR Max. (mΩ)	Core Material
TSDR3816-R47N	0.47	±30%	3.0	2.0	16	22	NiZn
TSDR3816-1R0N	1.0	±30%	2.0	1.6	26	37	
TSDR3816-1R5N	1.5	±30%	1.75	1.55	40	47	
TSDR3816-2R5N	2.5	±30%	1.45	1.25	50	58	
TSDR3816-3R6N	3.6	±30%	1.38	1.1	66	85	
TSDR3816-4R7N	4.7	±30%	1.2	0.9	90	105	
TSDR3816-6R8N	6.8	±30%	0.85	0.75	135	156	
TSDR3816-100N	10	±30%	0.74	0.56	185	205	
TSDR3816-150N	15	±30%	0.62	0.45	255	285	
TSDR3816-220N	22	±30%	0.51	0.36	410	450	
TSDR3816-330N	33	±30%	0.42	0.32	635	660	
TSDR3816-470N	47	±30%	0.39	0.25	940	1000	
TSDR3816-680N	68	±30%	0.32	0.22	1150	1450	
TSDR3816-101N	100	±30%	0.25	0.18	1930	2400	

Operating Temperature: -40 °C up to +125 °C

Temperature rise current: The actual value of DC current when the temperature rise is ΔT30 °C

Saturation Current that will cause initial inductance to drop approximately 35%

Typical Electrical Characteristics:

