

**TSDR Series**  
**SMD Shielded Tiny Power Inductor**  
**Size 1038**



**CHARACTERISTICS**

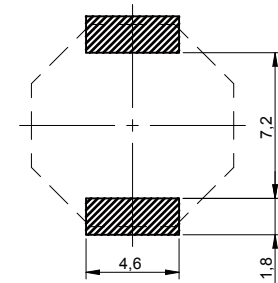
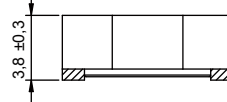
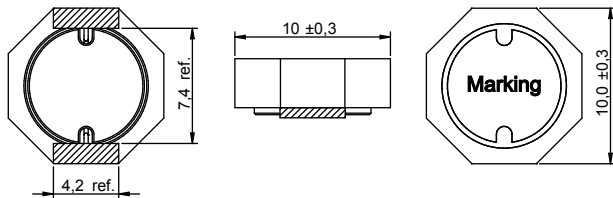
- Low profile type
- Magnetically shielded
- Different sizes available
- Quantity: 800pcs

**APPLICATION**

- DC/DC converter
- LC filter

Dimensions: [mm]

Land Pattern: [mm]



Electrical Properties:

Part No	Inductance (μH)	Tolerance	Temperature Rise Current (A)	Saturation Current (A)	DCR Typ. (mΩ)	DCR Max. (mΩ)	Core Material
TSDR1038-1R5N	1.5	±30 %	7.2	10.0	5.2	7.5	NiZn
TSDR1038-2R2N	2.2	±30 %	6.7	6.8	7.7	10.5	
TSDR1038-3R5N	3.5	±30 %	5.8	6.4	11.5	15	
TSDR1038-5R0N	5.0	±30 %	4.9	5.5	14.5	22	
TSDR1038-6R2N	6.2	±30 %	4.3	4.5	16.5	24	
TSDR1038-100N	10	±30 %	3.6	4.0	25	35	
TSDR1038-150N	15	±30 %	3.2	3.25	37	50	
TSDR1038-180N	18	±30 %	2.8	3.0	54	68	
TSDR1038-220N	22	±30 %	2.5	2.3	55.8	75	
TSDR1038-330N	33	±30 %	2.1	1.8	92	112	
TSDR1038-470N	47	±30 %	1.75	1.85	121	160	
TSDR1038-680N	68	±30 %	1.5	1.5	185	216	
TSDR1038-101N	100	±30 %	1.2	1.2	255	300	
TSDR1038-151N	150	±30 %	1.0	1.1	350	470	
TSDR1038-221N	220	±30 %	0.75	0.85	570	740	
TSDR1038-331N	330	±30 %	0.6	0.7	770	1000	
TSDR1038-681N	680	±30 %	0.46	0.5	1650	2150	

Operating Temperature: -40 °C up to +125 °C

Temperature rise current: The actual value of DC current when the temperature rise is ΔT30 °C

Saturation Current that will cause initial inductance to drop approximately 35%

Typical Electrical Characteristics:

