

NOTES1:

UL Standard

1. Rated voltage/current : 300V / 8A
2. Withstanding voltage : AC1600V/1Min.

IEC Standard

1. Pollution degree

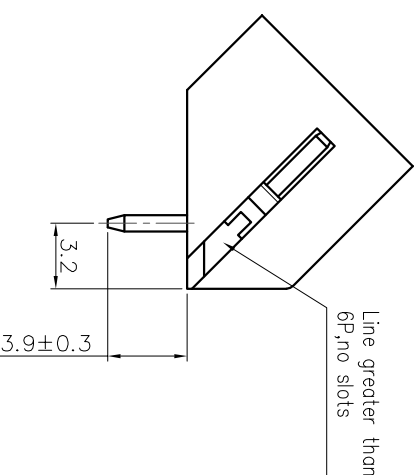
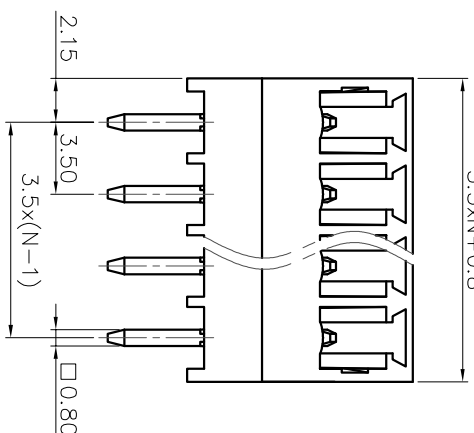
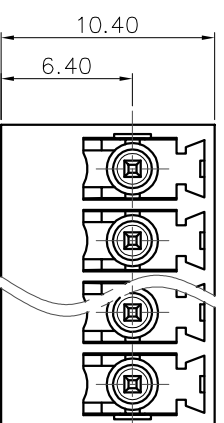
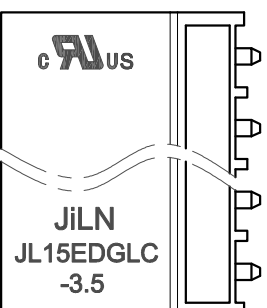
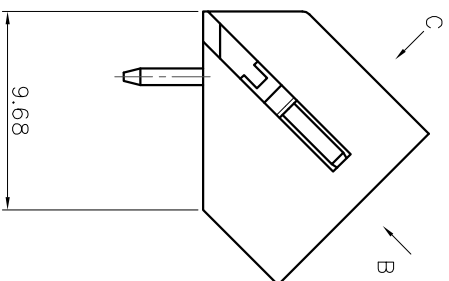
Overvoltage category	II
Rate impulse voltage(KV)	2.5KV
Rate voltage(V)	250V
Rate current(A)	12A

NOTES2:

1. Dimension shall be interpreted per ASME Y14.5-2009
2. Pitch : 3.50mm, Poles : N=02~24P
3. Operating temperature: -40°C~+105°C
4. Undimensioned tolerances:

Pitch range	In mm		Nominal dimension range		Over	
	mm	In	mm	In	mm	In
6	Over	10	TO	30	Over	0.1/10
	TO	10	TO	30	TO	150
10	Over	24	TO	60	Over	0.1/10
	TO	24	TO	60	TO	150
±0.15	±0.20	±0.30	±0.30	±0.50	±0.70	±1.00
	±0.30	±0.50	±0.70	±1.00	±1.30	±2*

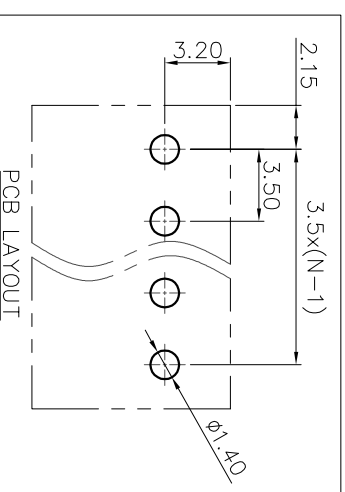
5. RoHS Compliance



Ordering Information

JL15EDGLC-350 XX G 0 1

- Pitch 350=3.50PH
- No of pins 2P~24P
- Housing Color B=Black G=Green U=Blue R=Red W=White Y=Yellow D=Orange E=Grey
- Packing 0=Pe 100g T=Tube A=Tray



DRAW	SHUANGPING ZHENG	SCALE	FIT	PART NO.	JL15EDGLC-350XXG01
CHECK	LICHAD LIU	UNIT	mm		
APPROVE	YONGLIANG GAO	SIZE	A4	TITLE:	JL15EDGLC-350-XXP 插拔式公座/绿色
		SHEET	1/1		
		PRD J			

JILIN 东莞市锦凌电子有限公司
DONGGUAN JINLING ELECTRONIC CO., LTD