

HSF

Recommended P.C.B Layout(Top Side)
(PCB BOARD TOLERANCE±0.05)

NOTES:

Current Rating: 2.0AMP
 Contact Resistance: 20mΩ Max
 Withstand Voltage: 500V AC/DC
 Insulation Resistance: 1000MΩ Min
 Operation Temperature: -40℃ to +105℃

Contact Material: Phosphor Bronze
 Contact plating: Au Or Sn over Ni
 Insulator Material: LCP+30%G.F UL94V-0

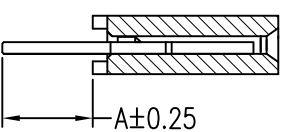
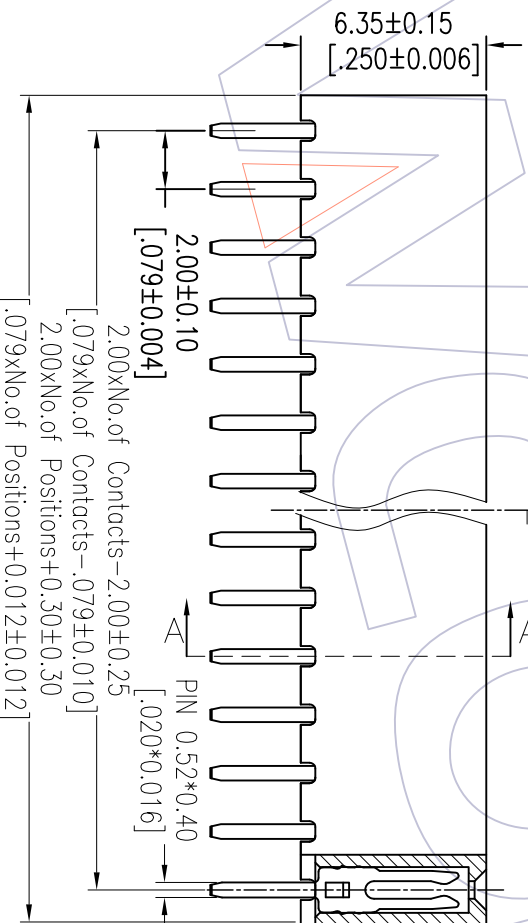
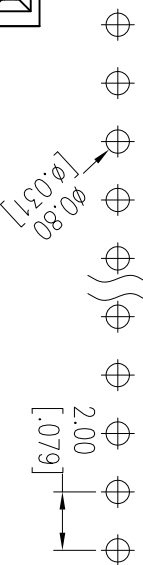
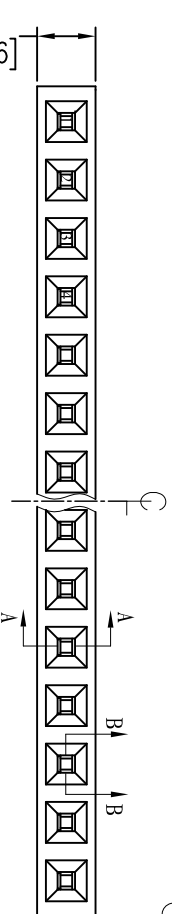


Ordering Information

2263 - 1 XX S XX D Y N T X

No of Pins per ROW=02~40PIN
 Contact Plating: GP=Gold Flash G3=10μr/Gold G4=15μr/Gold G5=30μr/Gold
 Insulator: D=LCP T=Tube
 Packing: S0=Gold Flash/Tin S3=10μr/Gold/Tin S4=15μr/Gold/Tin S5=30μr/Gold/Tin SN=Tin SM=Mate Tin

Item	Pitch	DIM A	Mating
Standard	2.00	3.1/2.4	1215/1220
Alternate			



SECTION B-B

SECTION A-A

A2	2013/03/15	Modify drawing	OPERATION	DRAW	DATE	SCALE	FIT	PART NO.
A1	2012/11/07	Modificat the table: DIM A 3.10--3.1/2.4	X.XX	Wang	2013/03/15	mm	A4	2263-1XXXXDYNTX
A0	2012/07/23	NEW	X.XXX	CHECK	DATE	SIZE	A4	TITLE: FH2.00mm SINGLE ROW 180° DIP H=6.35
REV	DATE	MODIFICATION DESCRIPTION	ANGLE	APPROVE	DATE	SHEET	1/1	Customer NO.
			± 3'			PROJ.		
			DIM	TOL				

WCON

Http: www.wcon.com

WCON-Dongguan
 Tel: +86 769 85358920
 Fax: +86 769 85358915
 E-mail: sales@wcon.com

WCON-Kunshan
 Tel: +86 512 57468408
 Fax: +86 512 57468468
 E-mail: sales@wcon.com