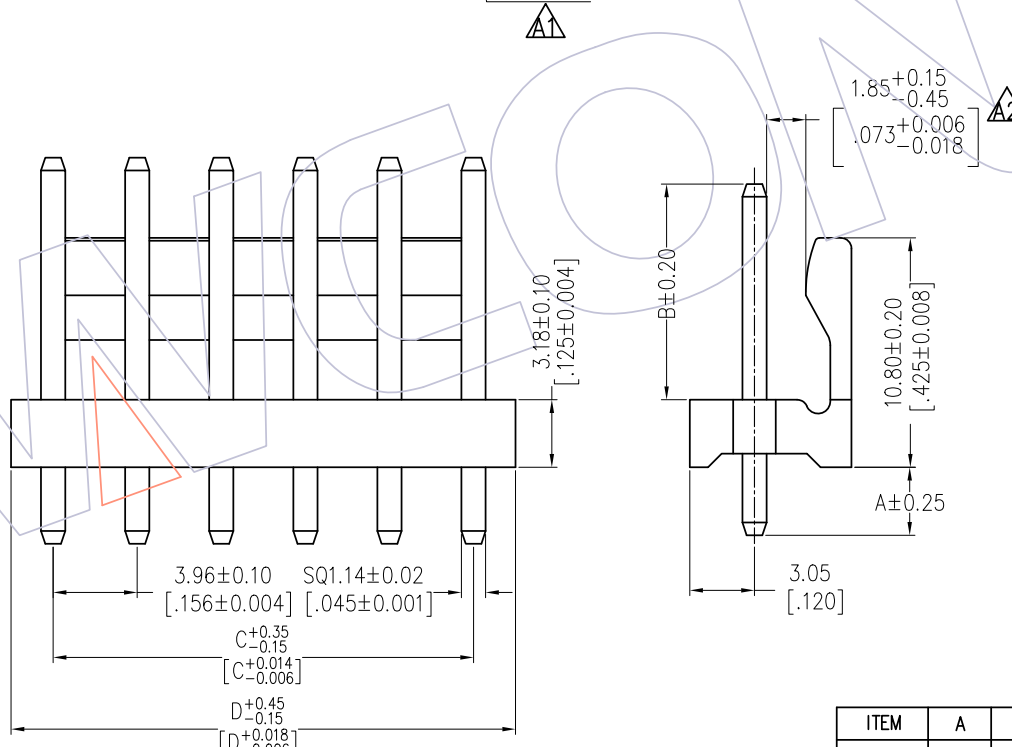
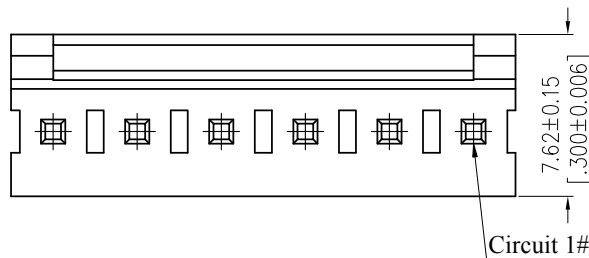
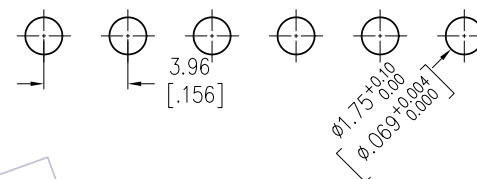


HSF

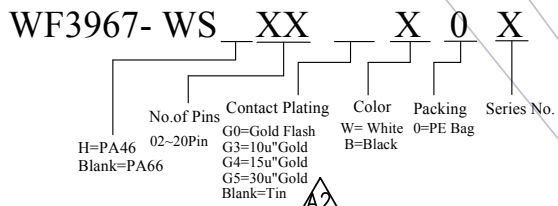
NOTES:
 Rated Current: 7.0A
 Contact Resistance: 20mΩ max
 Withstand Voltage: 1000V AC/Minute
 Insulation Resistance: 1000MΩ min
 Operation Temperature: -40℃ to +105℃

Contact Material: Brass
 Contact plating: Au Or Sn Over Ni
 Insulator Material: PA66 OR PA46 UL 94-V0

Recommended P.C.B Layout(Top Side)
 (PCB BOARD TOLERANCE±0.05)



Ordering Information



Specification & Ordering Information:

Circuit	Part No.	Dimension	
		C	D
02	WF3967-WS02XOX	3.96	7.92
03	WF3967-WS03XOX	7.92	11.88
04	WF3967-WS04XOX	11.88	15.84
05	WF3967-WS05XOX	15.84	19.80
06	WF3967-WS06XOX	19.80	23.76
07	WF3967-WS07XOX	23.76	27.72
08	WF3967-WS08XOX	27.72	31.68
09	WF3967-WS09XOX	31.68	35.64
10	WF3967-WS10XOX	35.64	39.60
11	WF3967-WS11XOX	39.60	43.56
12	WF3967-WS12XOX	43.56	47.52
13	WF3967-WS13XOX	47.52	51.48
14	WF3967-WS14XOX	51.48	55.44
15	WF3967-WS15XOX	55.44	59.40
16	WF3967-WS16XOX	59.40	63.36
17	WF3967-WS17XOX	63.36	67.32
18	WF3967-WS18XOX	67.32	71.28
19	WF3967-WS19XOX	71.28	75.24
20	WF3967-WS20XOX	75.24	79.20

ITEM	A	B
Standard	3.60	11.40
Alternate		

REV	DATE	MODIFICATION DESCRIPTION	CHANGE	OPERATION	DRAW	DATE	SCALE	FIT	PART NO.
A2	2020.08.06	Add 1.85+0.15/-0.45	△△	DuYing	X.X	±0.40	UNIT	mm	SEE TAB
A1	2016.10.31	端子第1 PIN位置变更	△△	DWM	X.XX	±0.25	SIZE	A4	TITLE:
A0	2012.09.17	NEW	----		X.XXX	±0.15	SHEET	1/1	VH 3.96 WAFER 180° DIP (SQUARE PIN)
					Angle	± 3'	PROJ.		Customer NO.

WCON

Http: www.wcon.com

WCON-Dongguan Tel: +86 769 85358920 Fax: +86 769 85358915 E-mail: sales@wcon.com

WCON-Kunshan Tel: +86 512 57468408 Fax: +86 512 57468468 E-mail: salesks@wcon.com