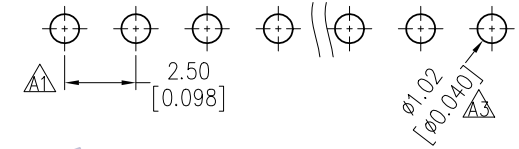
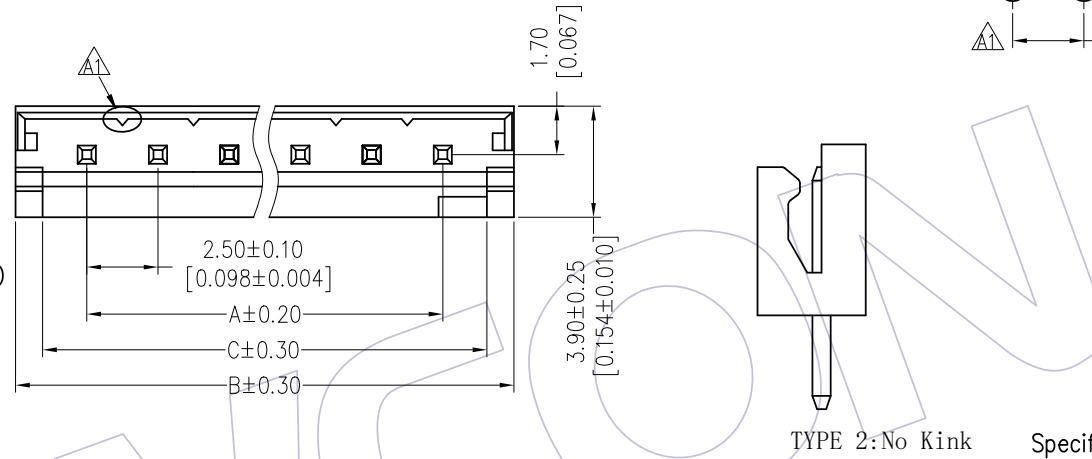


HSF

Recommended P.C.B Layout(Top Side)
(PCB BOARD TOLERANCE±0.05)

NOTES:
 Current Rating: 3.0AMP
 Voltage Rating: 250V AC,DC
 Contact Resistance: 20mΩ max
 Withstand Voltage: 800V AC/DC
 Insulation Resistance: 1000MΩ min
 Operation Temperature: -25℃ to +85℃

Contact Material: Brass
 Contact plating: Au Or Sn Over Ni
 Insulator Material: PA66 Or PA46 UL94V-0



Ordering Information

WF2504-WS XX X 0 X

Insulator Material
 H=PA46
 Blank=PA66

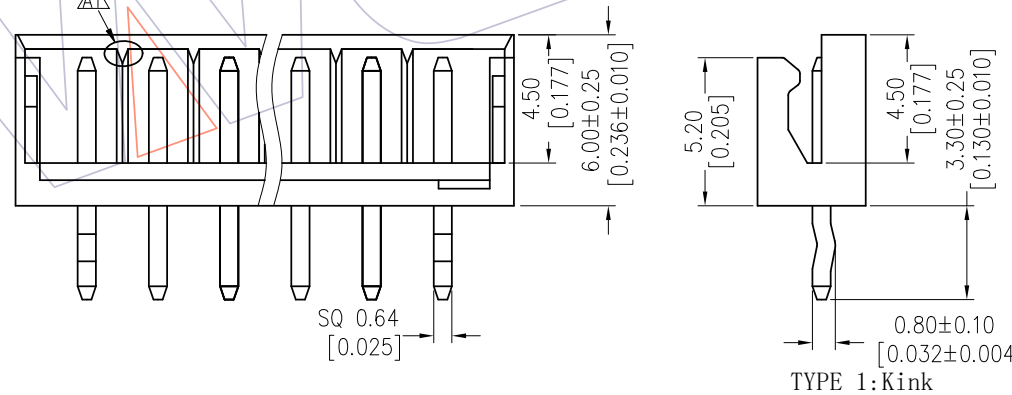
No. of pins
 02-15P

Contact Plating
 S0=Gold Flash/Tin
 S3=10u"Gold/Tin
 S4=15u"Gold/Tin
 S5=30u"Gold/Tin
 G0=Gold Flash
 G3=10u"Gold
 G4=15u"Gold
 G5=30u"Gold
 Blank=Tin

Color
 B=Black
 W=White

Series No.
 1=Type 1
 2=Type 2

Packing
 T=Tube
 0=PE Bag
 P=Tube+CAP



Specification & Ordering Information:

Circuit	Part No.	Dimension			Q'ty /Bag
		A	B	C	
02	WF2504-WS02X0X	2.50	7.5	5.6	1,000
03	WF2504-WS03X0X	5.00	10.0	8.1	1,000
04	WF2504-WS04X0X	7.50	12.5	10.6	1,000
05	WF2504-WS05X0X	10.00	15.0	13.1	1,000
06	WF2504-WS06X0X	12.50	17.5	15.6	1,000
07	WF2504-WS07X0X	15.00	20.0	18.1	1,000
08	WF2504-WS08X0X	17.50	22.5	20.6	1,000
09	WF2504-WS09X0X	20.00	25.0	23.1	1,000
10	WF2504-WS10X0X	22.50	27.5	25.6	1,000
11	WF2504-WS11X0X	25.00	30.0	28.1	1,000
12	WF2504-WS12X0X	27.50	32.5	30.6	1,000
13	WF2504-WS13X0X	30.00	35.0	33.1	1,000
14	WF2504-WS14X0X	32.50	37.5	35.6	1,000
15	WF2504-WS15X0X	35.00	40.0	38.1	1,000

REV	DATE	MODIFICATION DESCRIPTION	CHANGE	OPERATION	DRAW	DATE	SCALE	FIT	PART NO.
A3	2019/02/28	Modify	△	OPERATION	DRAW	DATE	SCALE	FIT	PART NO.
A2	2018/09/20	CANCEL CAP	△	x.X ±0.40	Ding	2019/02/28	UNIT	mm	SEE TAB
A1	2013/01/28	MODIFY THE P.C.B LAYOUT AND THE DRAWING	—	x.XX ±0.25	CHECK	DATE	SIZE	A4	TITLE:
AO	2012/09/06	NEW	—	x.XXX ±0.15	APPROVE	DATE	SHEET	1/1	EH 2.50 WAFER 180° DIP
				Angle ± 3°			PROJ.	Customer NO.	
				DIM TOL					

WCON

Http: www.wcon.com

WCON-Dongguan
 Tel: +86 769 85358920
 Fax: +86 769 85358915
 E-mail: sales@wcon.com

WCON-Kunshan
 Tel: +86 512 57468408
 Fax: +86 512 57468468
 E-mail: salesks@wcon.com